

THIS MAP WAS PREPARED FOR
ASSESSMENT PURPOSE ONLY

SW1/4 NW1/4 SEC. 2 T.28S. R.6 W W.M.
DOUGLAS COUNTY

REVISED ON
12-8-99

28 6 2BC

1"=100'

1/16
COR

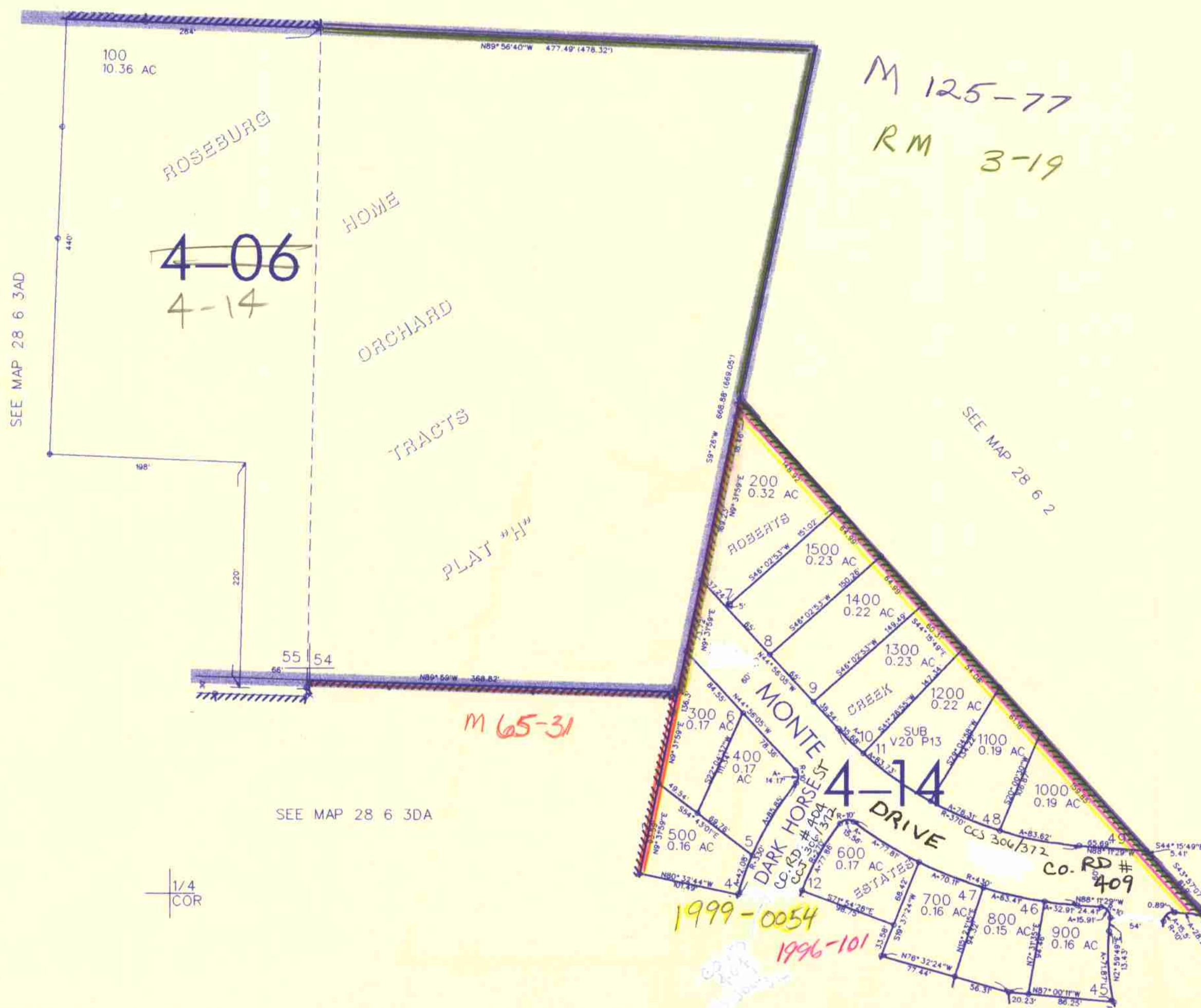
1/16
COR

CANCELLED NO'S

299

SEE MAP 28 6 3AD

SEE MAP 28 6 2



SEE MAP 28 6 3AD

SEE MAP 28 6 2

SEE MAP 28 6 3DA

SEE MAP 28 6 2CB

559,000

4,153,000

28 6 2BC

nw St. 1-00