

SE1/4 NE1/4 SEC.2 T.28S. R.6W. W.M.  
DOUGLAS COUNTY

REVISED ON  
1-8-19

28 6 2AD

THIS MAP WAS PREPARED FOR  
ASSESSMENT PURPOSE ONLY.

SEE MAP 28 6 2AA

1" = 100'

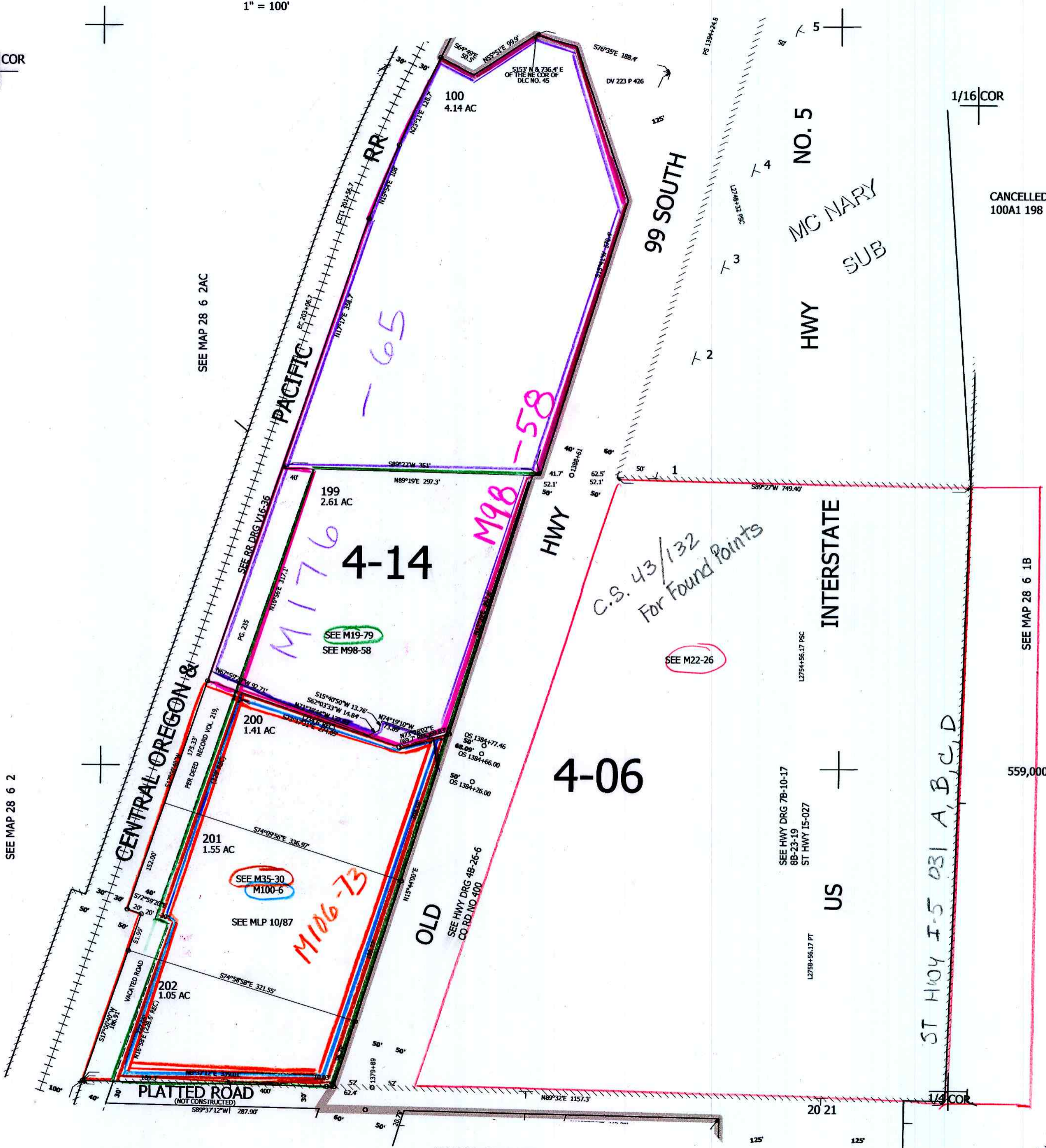
1/16 COR

1/16 COR

CANCELLED NO'S  
100A1 198

1/16 COR

1/4 COR



SEE MAP 28 6 2

SEE MAP 28 6 2AC

SEE MAP 28 6 2DA

SEE MAP 28 6 1B

559,000

ST HWY I-5 031 A, B, C, D

INTERSTATE

US

99 SOUTH

NO. 5

MC NARY  
SUB

HWY

4-06

4-14

28 6 2AD

4,157,000

rew  
8/16-19