

THIS MAP WAS PREPARED FOR ASSESSMENT PURPOSE ONLY.

NE1/4 NE1/4 SEC.2 T.28S. R.6W. W.M. DOUGLAS COUNTY

1" = 100'

REVISED ON 7-8-11

28 6 2AA

1/16 COR

35 36

CANCELLED NO'S

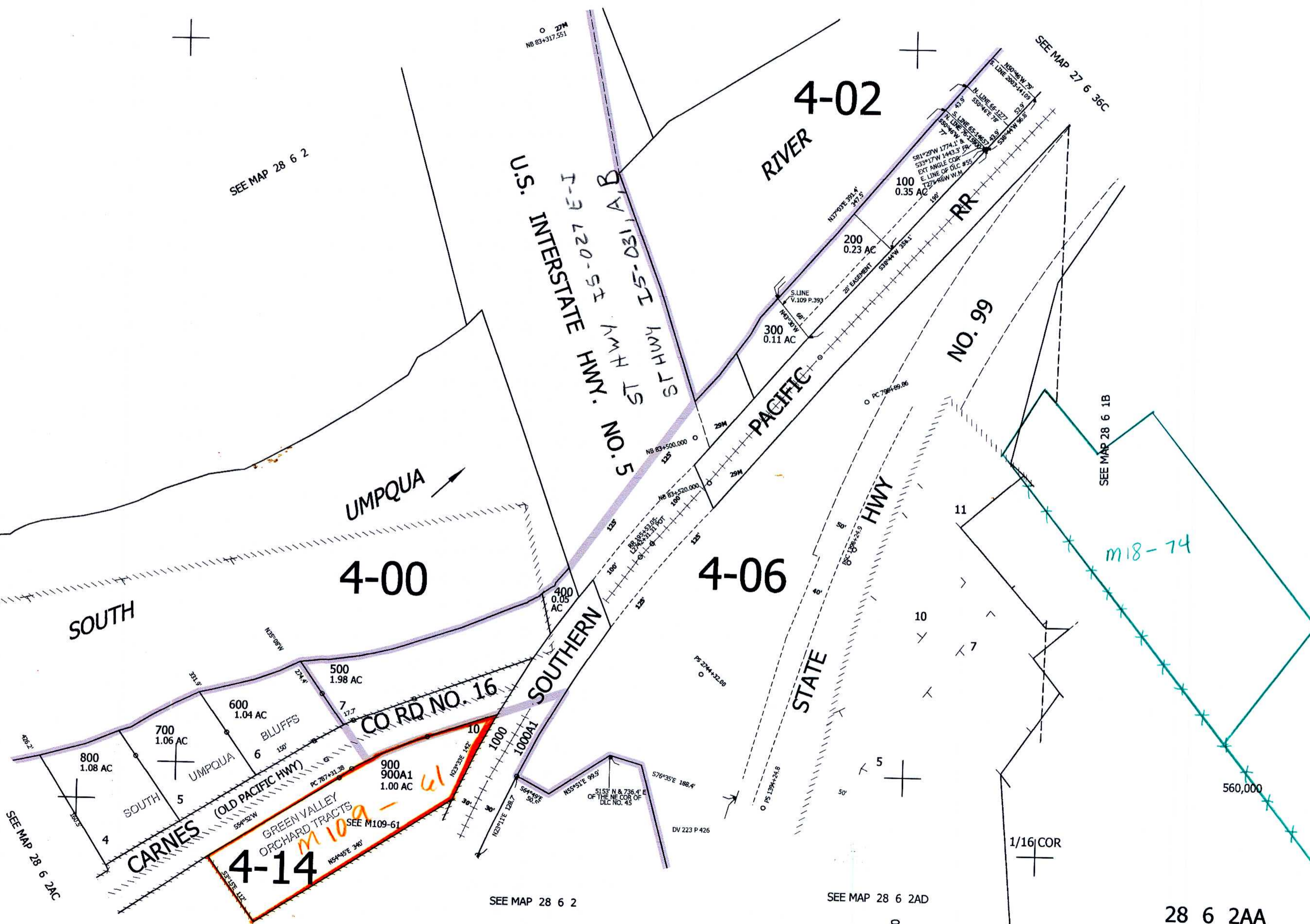
2 1

SEE MAP 27 6 35

SEE MAP 28 6 2

SEE MAP 27 6 36C

SEE MAP 28 6 1B



SEE MAP 28 6 2AC

SEE MAP 28 6 2

SEE MAP 28 6 2AD

28 6 2AA

cm 8/8/11