

THIS MAP WAS PREPARED FOR ASSESSMENT PURPOSE ONLY.

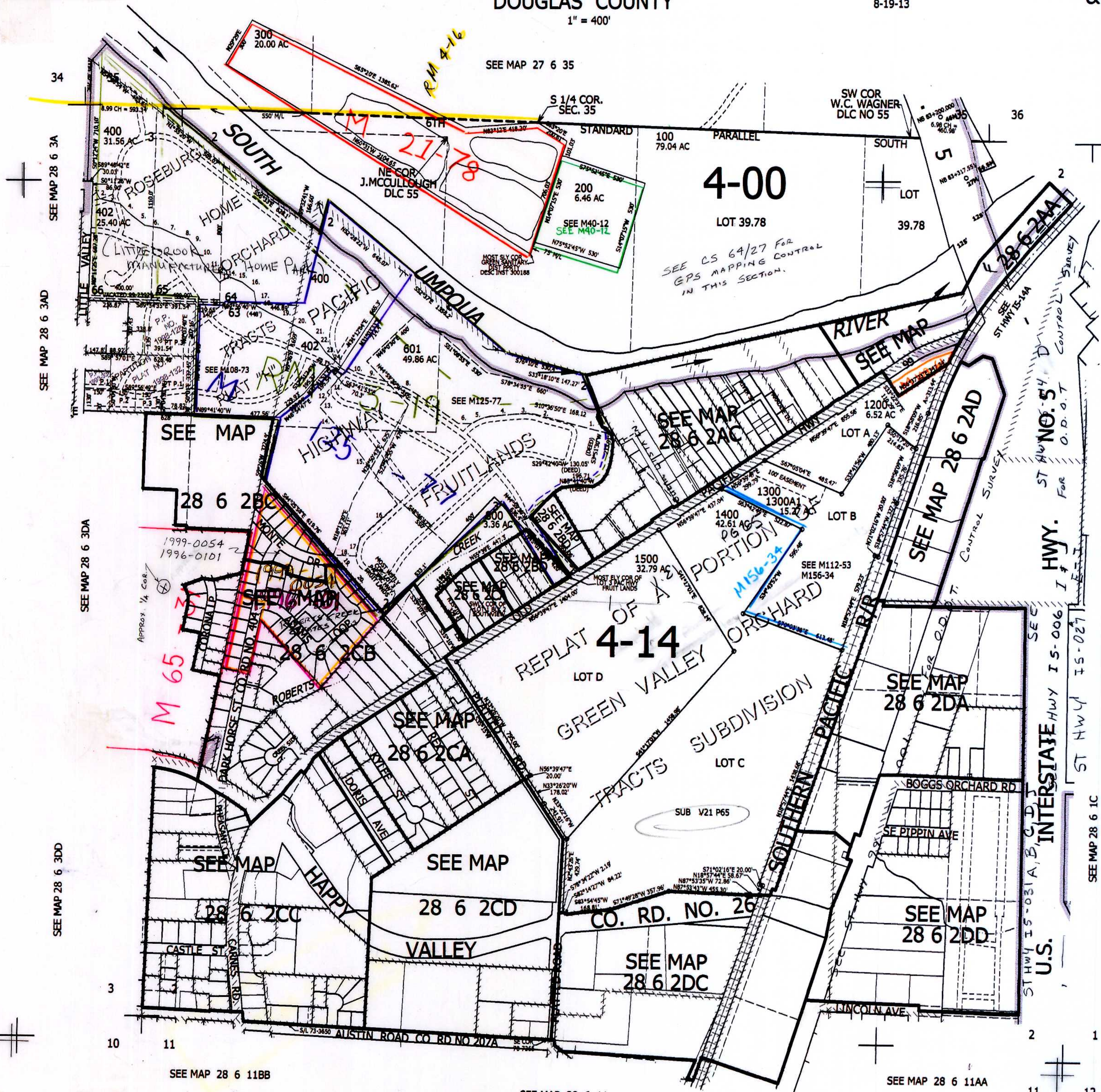
SEC.2 T.28S. R.6W. W.M. DOUGLAS COUNTY

1" = 400'

REVISED ON 8-19-13

28 6 2 & INDEX

CANCELLED NO'S
901 602 603
698 697 699
401 701 1000
1000M1 700 604
1100 1101 500
600 900



1

SEE MAP 28 6 1B

PARCEL 601

1. N78°44'22"W 140.74'
2. N77°51'07"W 325.78'
3. LC=N87°25'33"W 71.52'
4. S83°00'00"W 183.52'
5. LC=S66°25'25"W 122.68'
6. S88°59'36"W 84.28'
7. N57°03'12"W 273.9'
8. LC=N67°13'48"W 187.29'
9. N77°24'24"W 133.83'
10. LC=N69°38'18"W 127.06'
11. S37°57'30"W 186.75'
12. S52°02'30"W 20'
13. S37°57'30"W 90'
14. S43°35'52"E 277.21'
15. S39°16'33"W 450.99'
16. S45°23'33"W 296.83'
17. S6°38'10"W 102.21'
18. N89°55'33"W 145.94'
19. S45°04'20"E 463.15'
20. S44°04'30"E 452.28'

TL 400 & 402

1. N46°52'22"E 33.46'
2. S30°45'14"E 41.34'
3. S77°51'19"E 123.56'
4. S46°15'35"E 87.83'
5. S53°50'52"E 102.89'
6. S81°50'42"E 93.76'
7. S67°34'12"E 115.38'
8. S87°14'10"E 59.50'
9. S39°42'47"E 74.46'
10. S27°49'43"E 87.07'
11. S42°16'48"E 79.15'
12. S42°20'13"E 71.46'
13. N60°14'46"E 53.81'
14. N41°31'08"E 9.08'
15. S69°36'31"E 84.72'
16. S53°59'26"E 88.11'
17. S11°43'31"E 83.75'
18. S62°44'11"E 91.38'
19. S67°03'52"E 104.55'
20. S64°03'36"E 115.99'
21. S52°38'39"E 109.58'
22. S36°27'57"E 73.24'
23. S50°46'44"E 25.00'
24. S49°56'50"E 93.43'

556,000

28 6 2 & INDEX

B.F. 2 99