

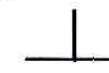
1/4 COR

THIS MAP WAS PREPARED FOR ASSESSMENT PURPOSE ONLY.

NE1/4 SEC.1 T.28S. R.6W. W.M. DOUGLAS COUNTY

1" = 200'

36 31



1 6

28 6 1A

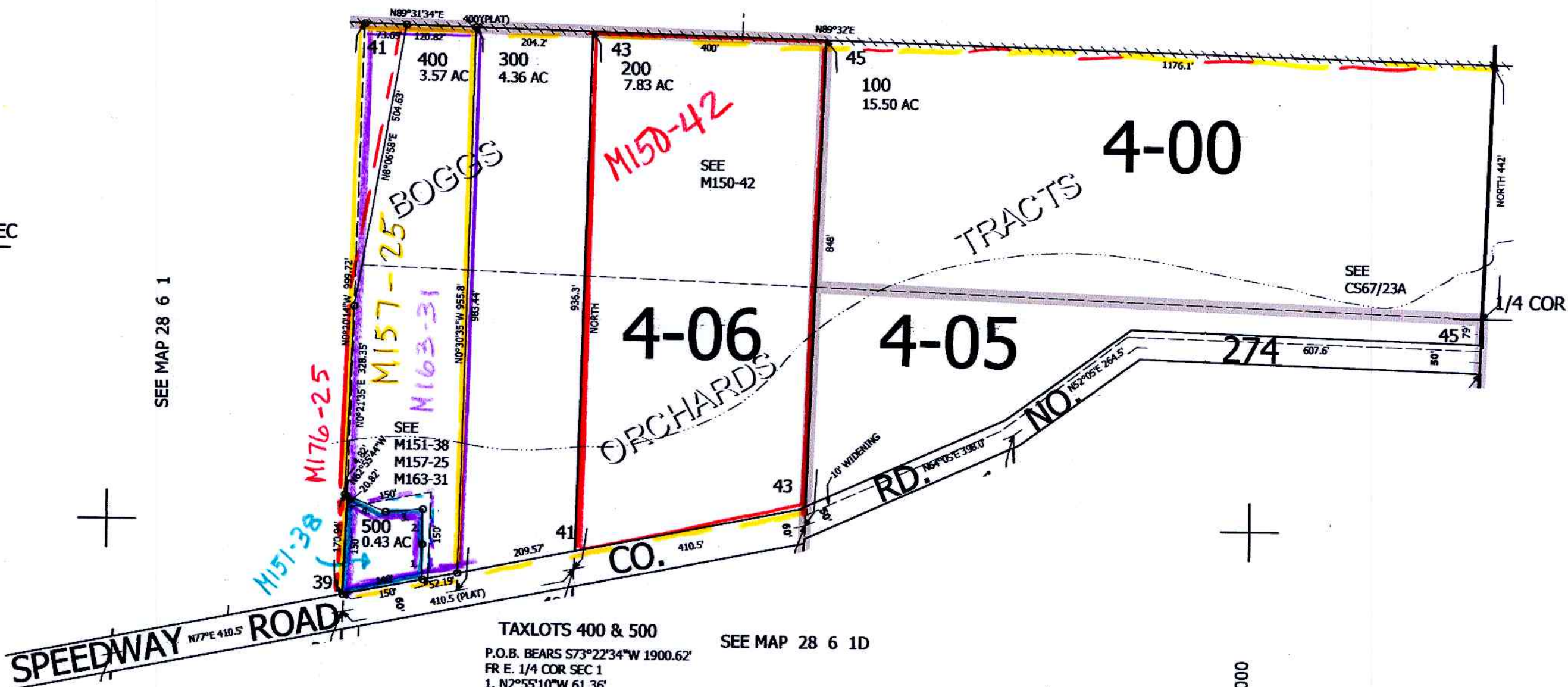
REVISED ON 11-15-19

CANCELLED NO'S 401 501 402

SEE MAP 28 6 1

CEN SEC

SEE MAP 28 6 1



SEE MAP 28 5 6

TAXLOTS 400 & 500
 P.O.B. BEARS S73°22'34"W 1900.62'
 FR E. 1/4 COR SEC 1
 1. N2°55'10"W 61.36'
 2. N1°11'47"W 60.82'
 3. S83°20'06"W 65.16'
 4. N70°01'09"W 72.69'

SEE MAP 28 6 1D

558,000

4,162,000

11-26-19 JB
JCV
28 6 1A