

SECTION 36 T.28S. R.5W. W.M.
DOUGLAS COUNTY

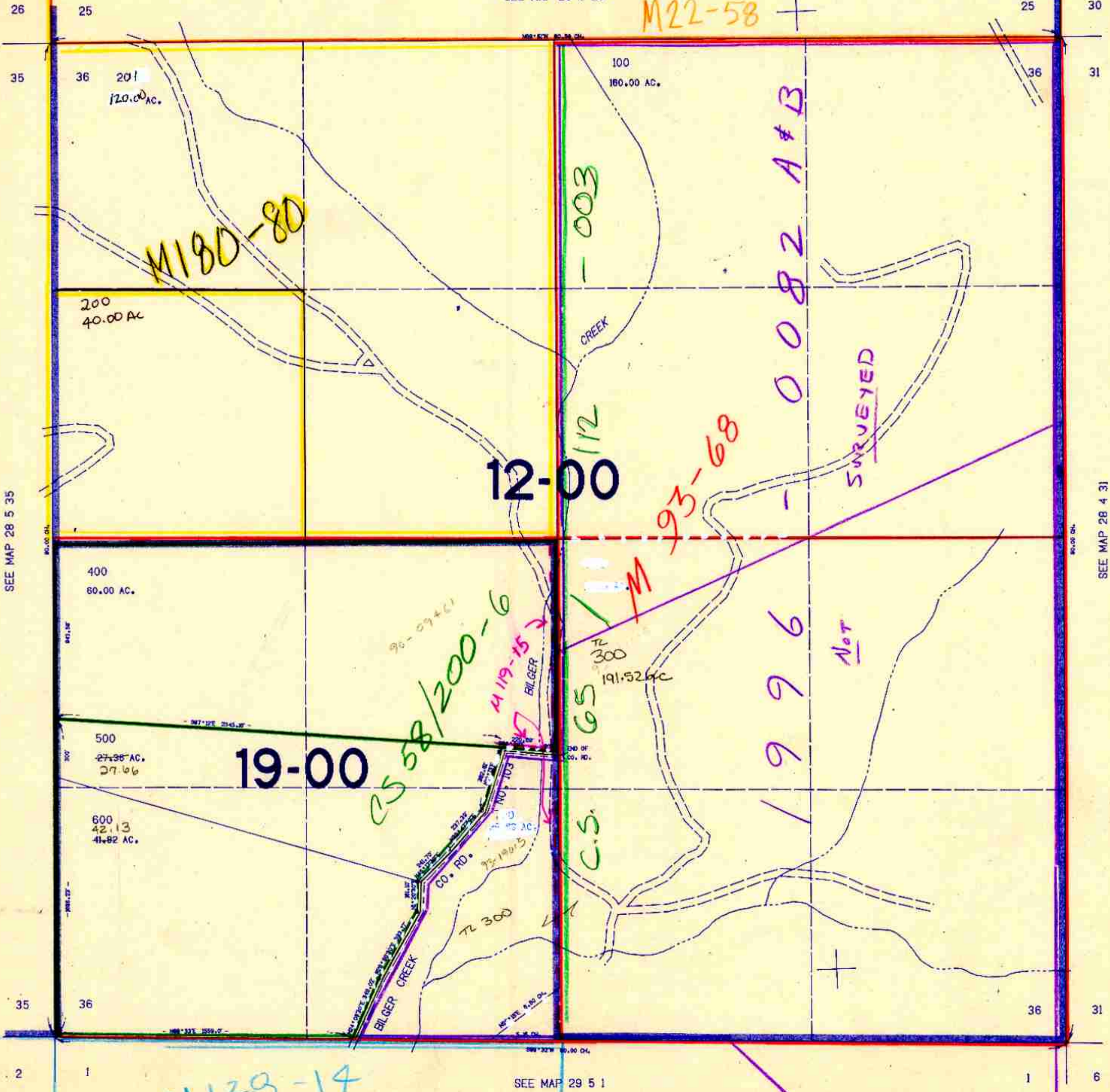
28 5 36

THIS MAP WAS PREPARED FOR
ASSESSMENT PURPOSE ONLY.

1"=400'

SEE MAP 28 5 25

M22-58



SEE MAP 28 5 35

SEE MAP 28 4 31

529.000

M128-14

SEE MAP 29 5 1

28 5 36

1/85
C.M.O.