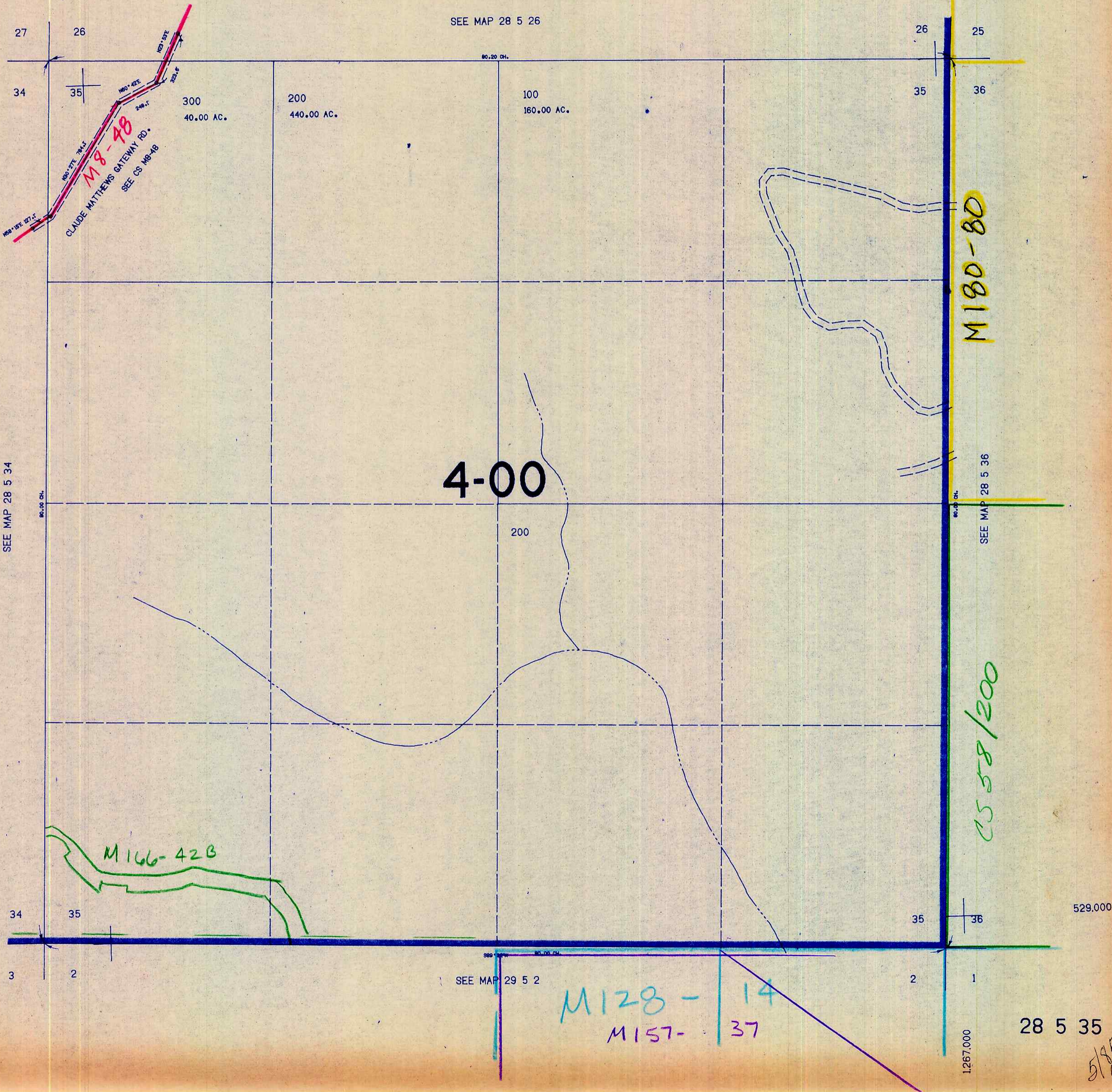


SECTION 35 T.28S. R.5W. W.M.
DOUGLAS COUNTY

28 5 35

THIS MAP WAS PREPARED FOR
ASSESSMENT PURPOSE ONLY.

1"=400'



SEE MAP 28 5 26

SEE MAP 28 5 34

SEE MAP 28 5 36

SEE MAP 29 5 2

28 5 35

5/95
CMO