

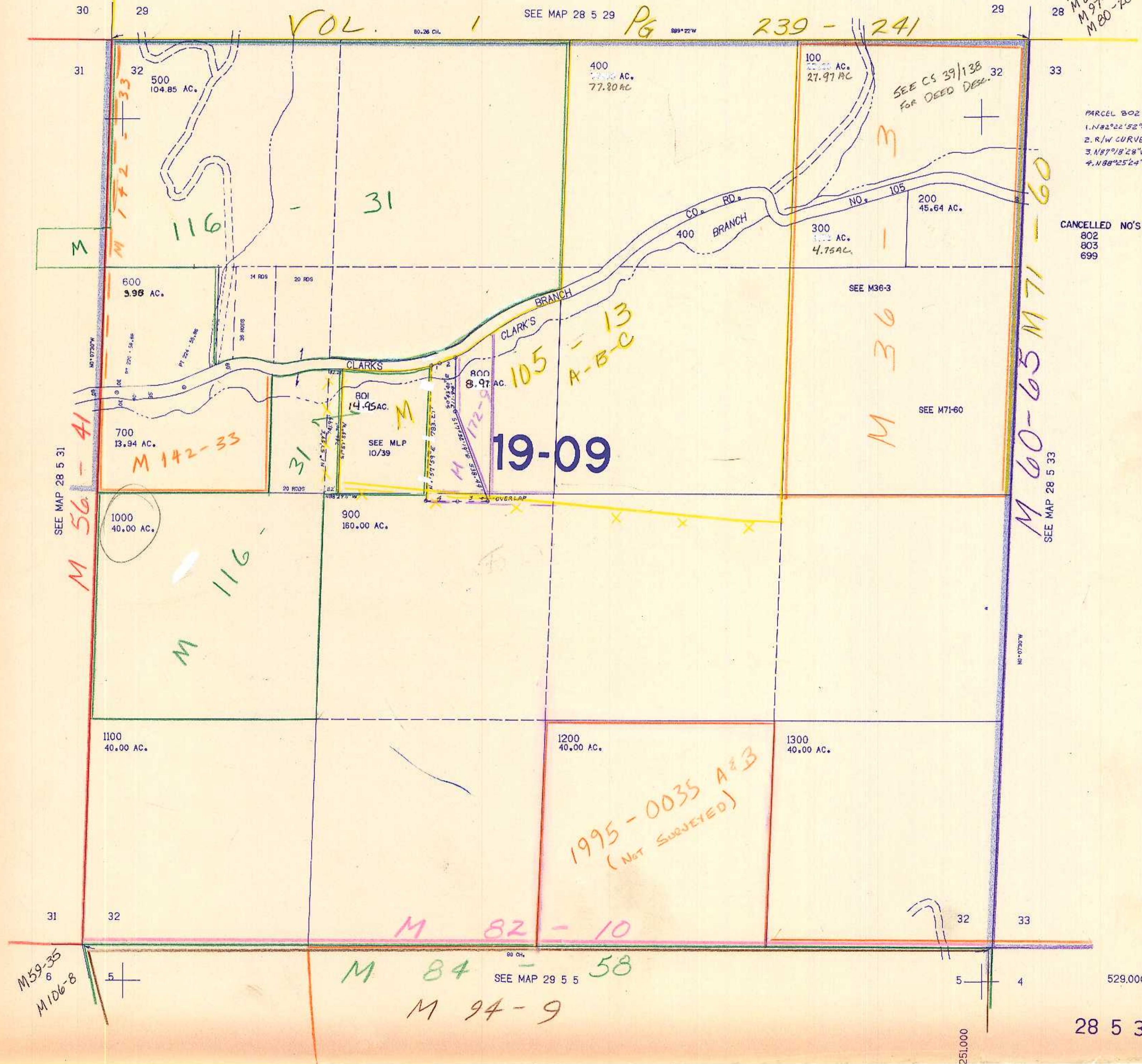
SECTION 32 T.28S. R.5W. W.M.  
DOUGLAS COUNTY

REVISED ON  
11-3-92

28 5 32

THIS MAP WAS PREPARED FOR  
ASSESSMENT PURPOSE ONLY.

1"=400'



M 61-52  
M 61-67  
M 97-78  
M 80-28

PARCEL 802  
1. N82°22'52"E 57.55'  
2. R/W CURVE 92.94'  
3. N87°18'28"W 156.00'  
4. N88°25'24"W 187.08'

CANCELLED NO'S  
802  
803  
699

1995-0035 A&B  
(NOT SURVEYED)

M 59-35  
M 106-8

28 5 32