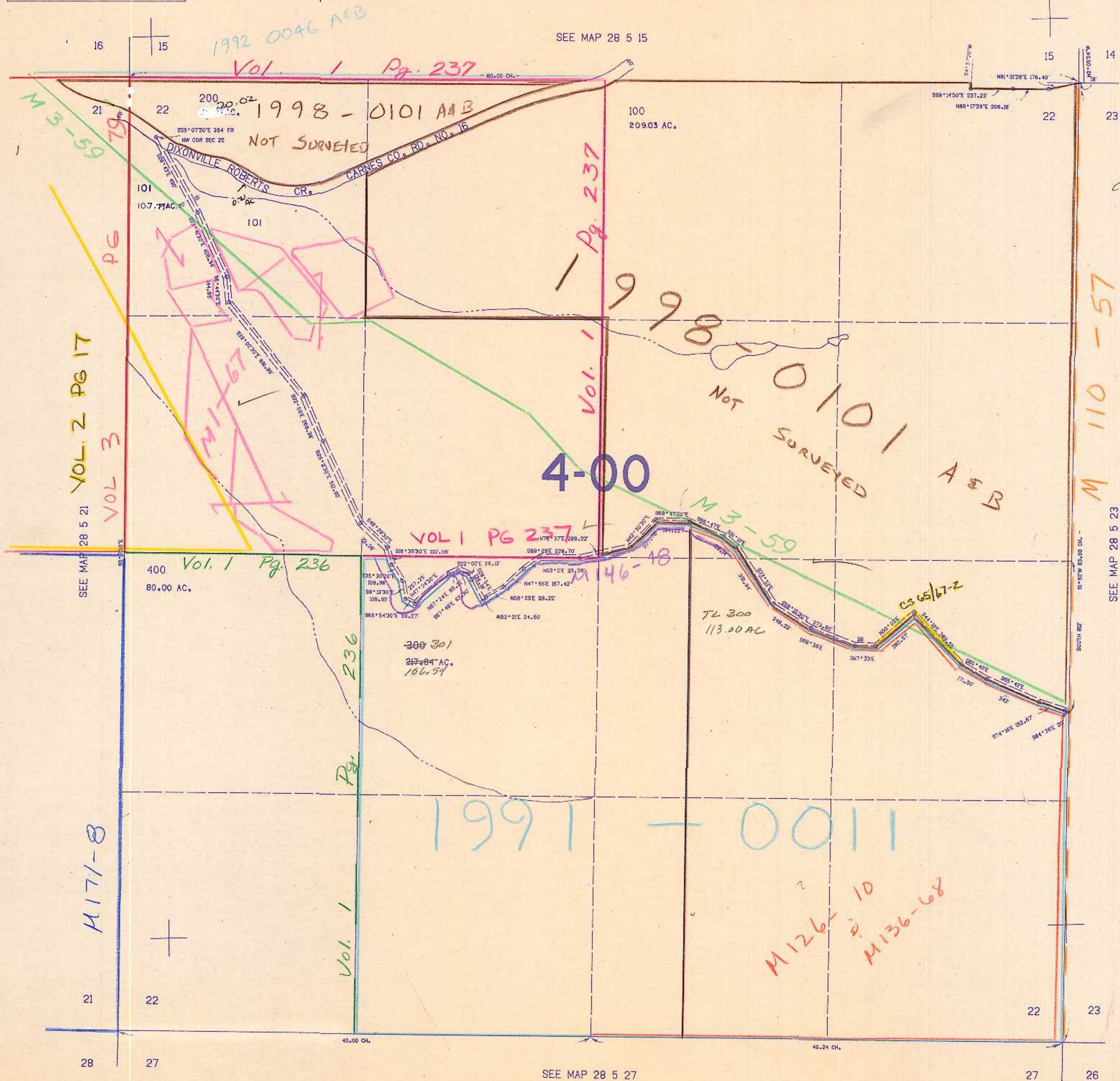


SECTION 22 T.28S. R.5W. W.M.
DOUGLAS COUNTY

28 5 22

THIS MAP WAS PREPARED FOR
ASSESSMENT PURPOSE ONLY.

1"=400'



cancelled
102

M 110-57

VOL. 2 PG 17

VOL 3

SEE MAP 28 5 21

M 171-8

Vol. 1 Pg. 236

VOL 1 PG 237

Vol. 1 Pg. 237

T2 300
113.00 AC

CS 65/67-2

M 126-10
M 136-68

SEE MAP 28 5 23

SEE MAP 28 5 27

28 5 22

TFV
390
CBM

540.000

262.000