

THIS MAP WAS PREPARED FOR ASSESSMENT PURPOSE ONLY.

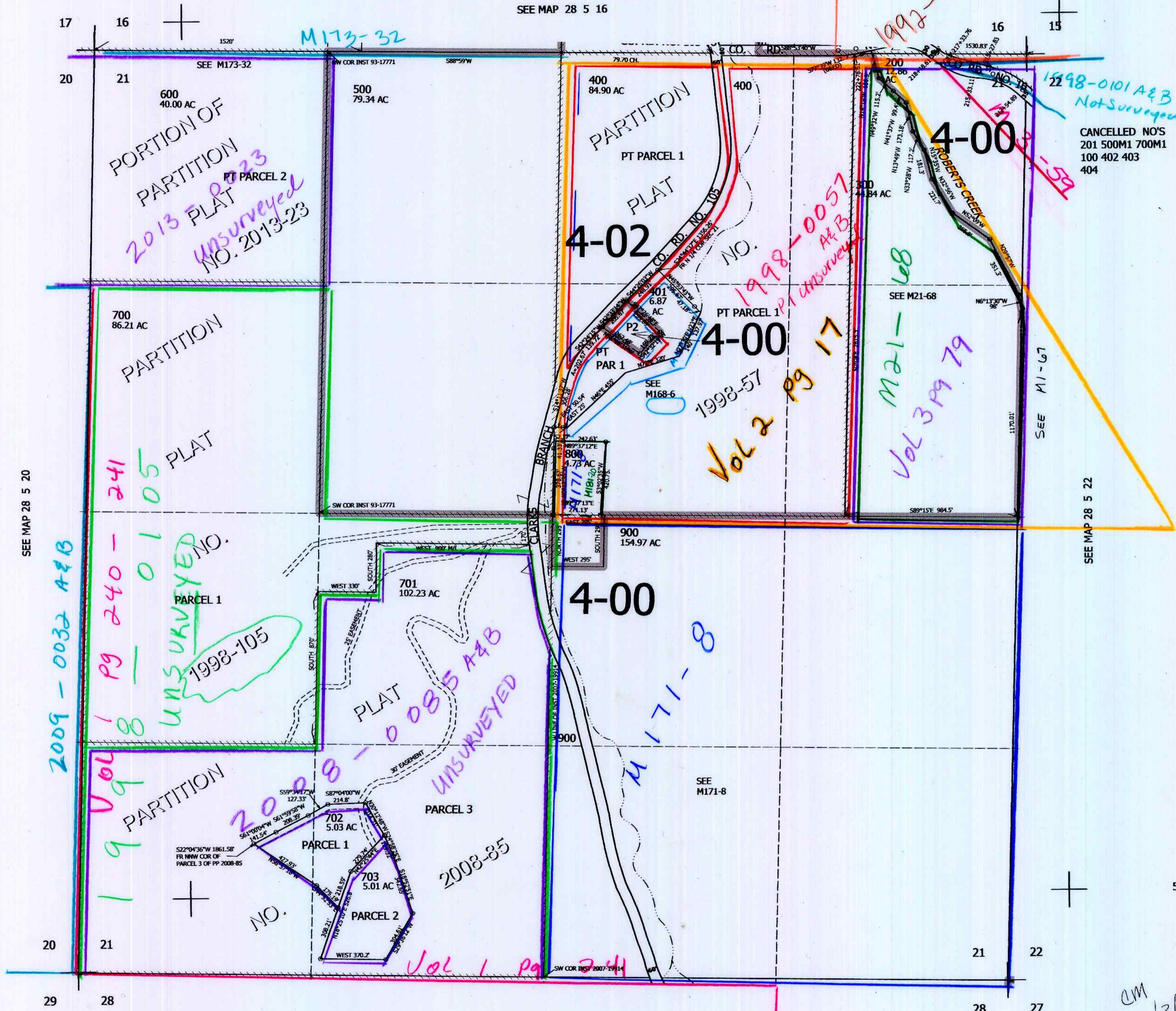
SEC.21 T.28S. R.5W. W.M.
DOUGLAS COUNTY

1" = 400'

REVISED ON
8-3-22

28 5 21

SEE MAP 28 5 16



SEE MAP 28 5 20

SEE MAP 28 5 22

1998-0057
A&B
Vol 2 pg 17

2009-0032 A&B
Vol 1 pg 8
1998-0105
UNSURVEYED

2008-0085 A&B
UNSURVEYED
Vol 1 pg 241

1992-0046
A&B

1998-0101 A&B
Not Surveyed

CANCELLED NO'S
201 500M1 700M1
100 402 403
404

M21-68
Vol 3 pg 79

540,000

4,178,000

CM
6/3/14
sc

28 5 21