

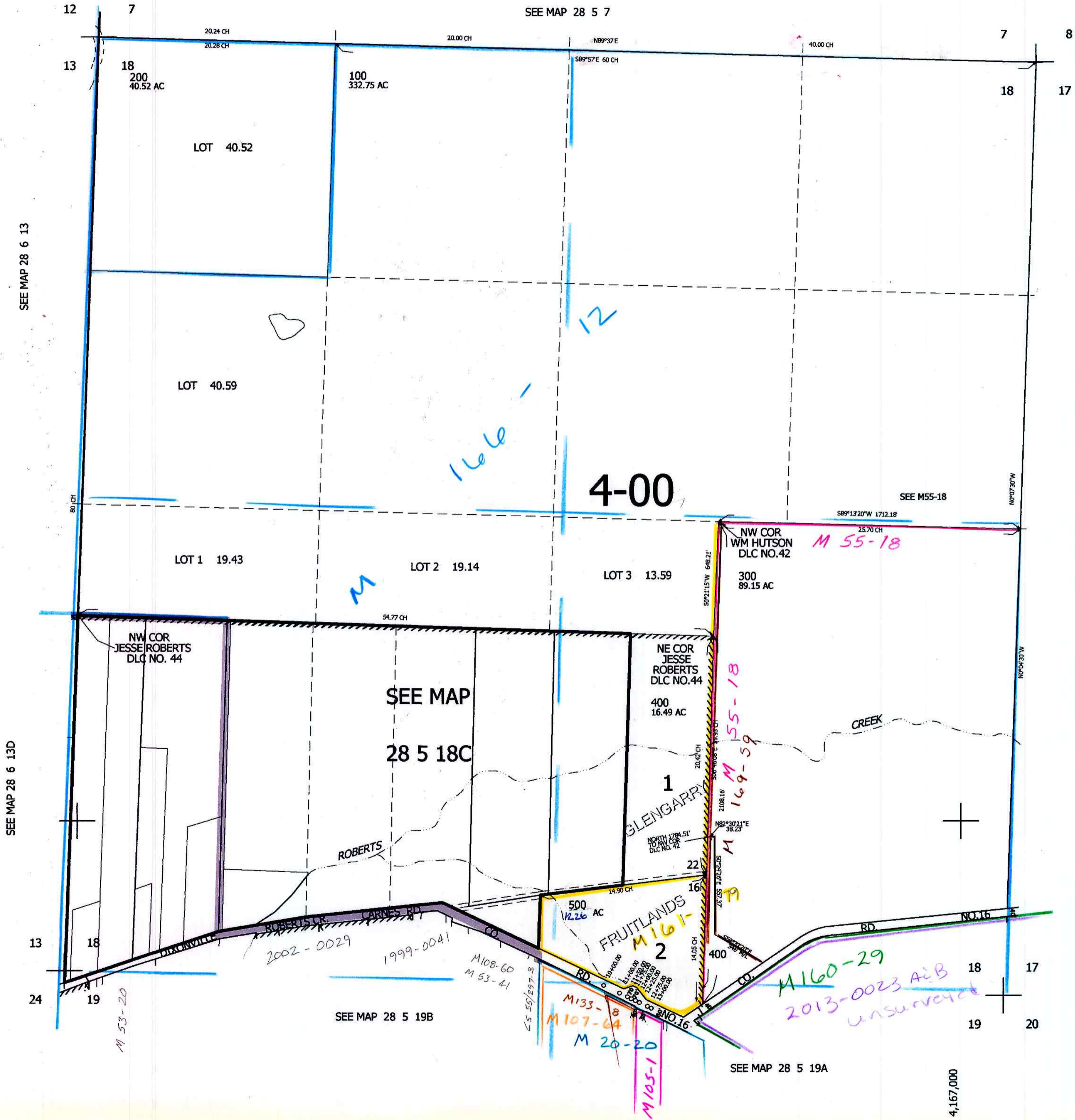
THIS MAP WAS PREPARED FOR ASSESSMENT PURPOSE ONLY.

SEC.18 T.28S. R.5W. W.M.  
DOUGLAS COUNTY

1" = 400'

REVISED ON  
12-19-05

28 5 18  
& INDEX



CANCELLED NO'S  
301

SEE MAP 28 5 17

546,000

28 5 18  
& INDEX  
12-05 SP