

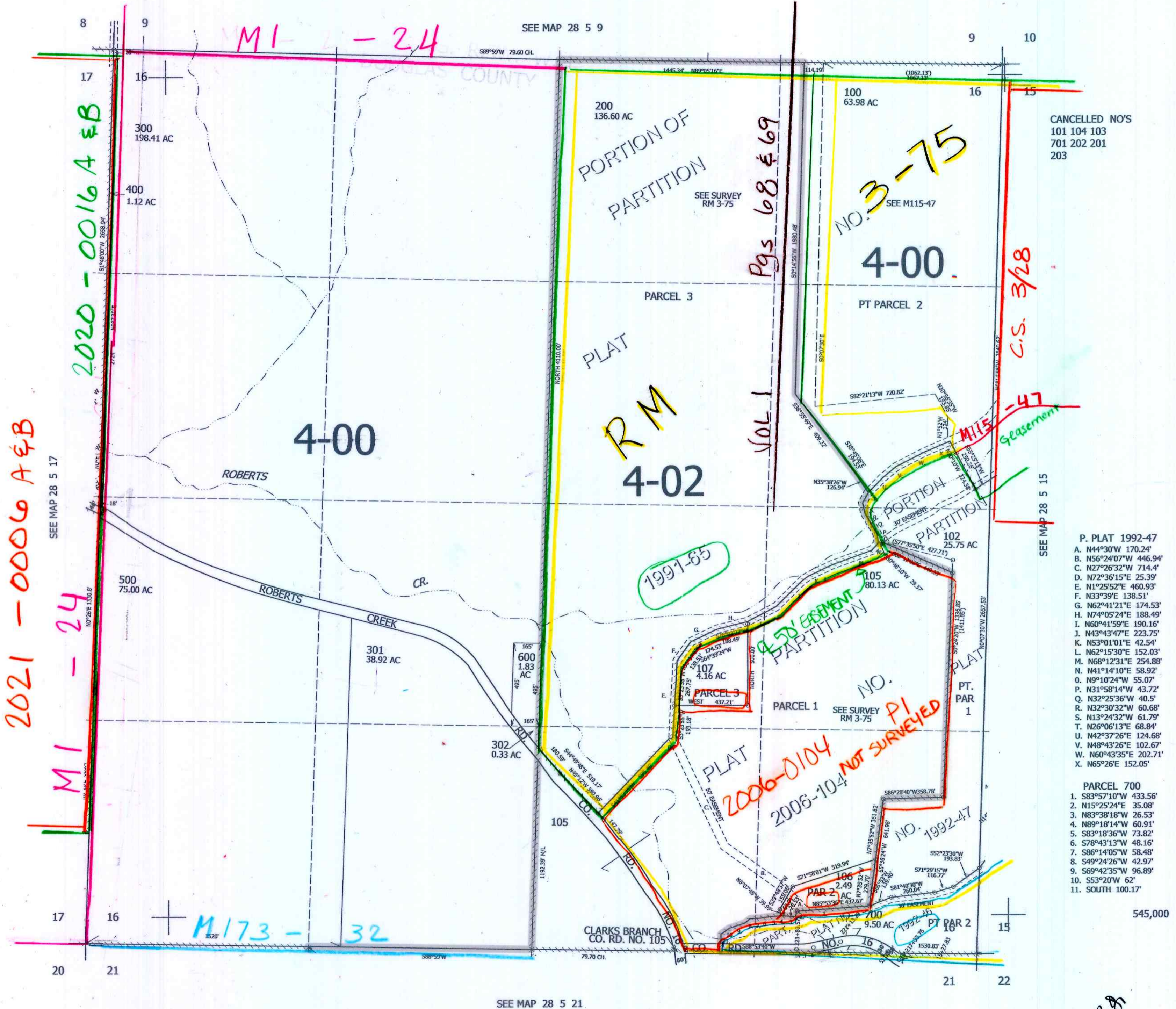
THIS MAP WAS PREPARED FOR ASSESSMENT PURPOSE ONLY.

SEC.16 T.28S. R.5W. W.M. DOUGLAS COUNTY

1" = 400'

REVISED ON 2-28-22

28 5 16



CANCELLED NO'S
101 104 103
701 202 201
203

- P. PLAT 1992-47
- A. N44°30'W 170.24'
 - B. N56°24'07"W 446.94'
 - C. N27°26'32"W 714.4'
 - D. N72°36'15"E 25.39'
 - E. N1°25'52"E 460.93'
 - F. N33°39'E 138.51'
 - G. N62°41'21"E 174.53'
 - H. N74°05'24"E 188.49'
 - I. N60°41'59"E 190.16'
 - J. N43°43'47"E 223.75'
 - K. N53°01'01"E 42.54'
 - L. N62°15'30"E 152.03'
 - M. N68°12'31"E 254.88'
 - N. N41°14'10"E 58.92'
 - O. N9°10'24"W 55.07'
 - P. N31°58'14"W 43.72'
 - Q. N32°25'36"W 40.5'
 - R. N32°30'32"W 60.68'
 - S. N13°24'32"W 61.79'
 - T. N26°06'13"E 68.84'
 - U. N42°37'26"E 124.68'
 - V. N48°43'26"E 102.67'
 - W. N60°43'35"E 202.71'
 - X. N65°26'E 152.05'

- PARCEL 700
- 1. S83°57'10"W 433.56'
 - 2. N15°25'24"E 35.08'
 - 3. N83°38'18"W 26.53'
 - 4. N89°18'14"W 60.91'
 - 5. S83°18'36"W 73.82'
 - 6. S78°43'13"W 48.16'
 - 7. S86°14'05"W 58.48'
 - 8. S49°24'26"W 42.97'
 - 9. S69°42'35"W 96.89'
 - 10. S53°20'W 62'
 - 11. SOUTH 100.17'

3/10/22
ICW

28 5 16