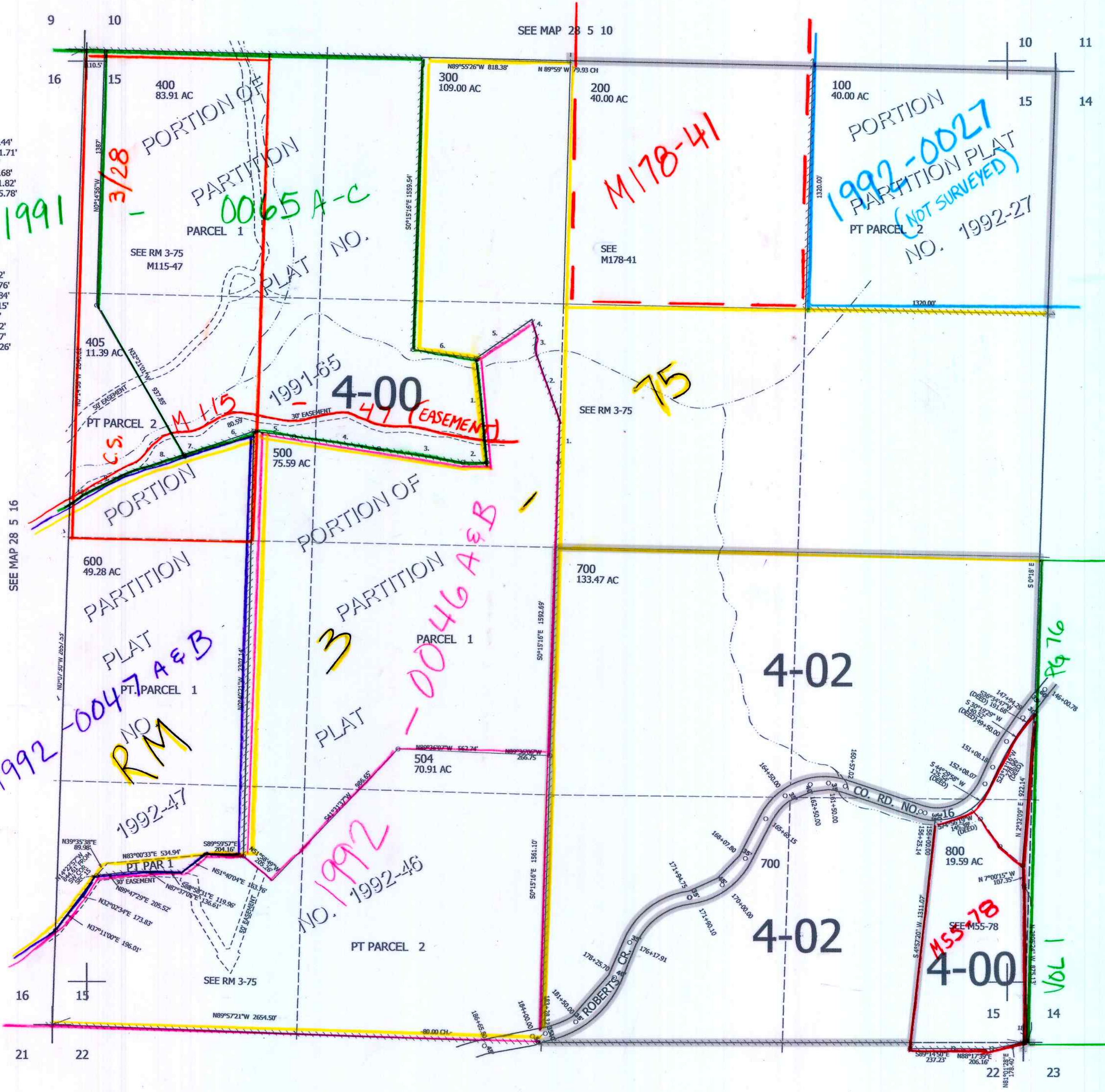


- PARCEL 300
1. N2°36'25"W 226.44'
 2. N21°24'25"W 411.71'
 3. N5°27'40"E 70.5'
 4. N16°13'52"W 93.68'
 5. S53°08'06"W 371.82'
 6. N83°42'42"W 345.78'

- P. PLAT 1991-65
1. S8°00'00"E 566.3'
 2. S87°57'31"W 130'
 3. N82°56'34"W 460.2'
 4. N83°46'51"W 463.76'
 5. N84°48'33"W 219.84'
 6. S69°09'22"W 319.15'
 7. S70°11'31"W 80.59'
 8. S70°11'31"W 324.32'
 9. S61°54'53"W 212.07'
 10. S55°25'13"W 250.26'



CANCELLED NO'S
301 302 303
401 403 404
402 501 502
503 601 602
603 505

SEE MAP 28 5 14

3/2022 sev

545,000

4,183,000