

THIS MAP WAS PREPARED FOR
ASSESSMENT PURPOSE ONLY
AVAILABLE FROM DCGIS

SECTION 13 T28S R5W WM
DOUGLAS COUNTY

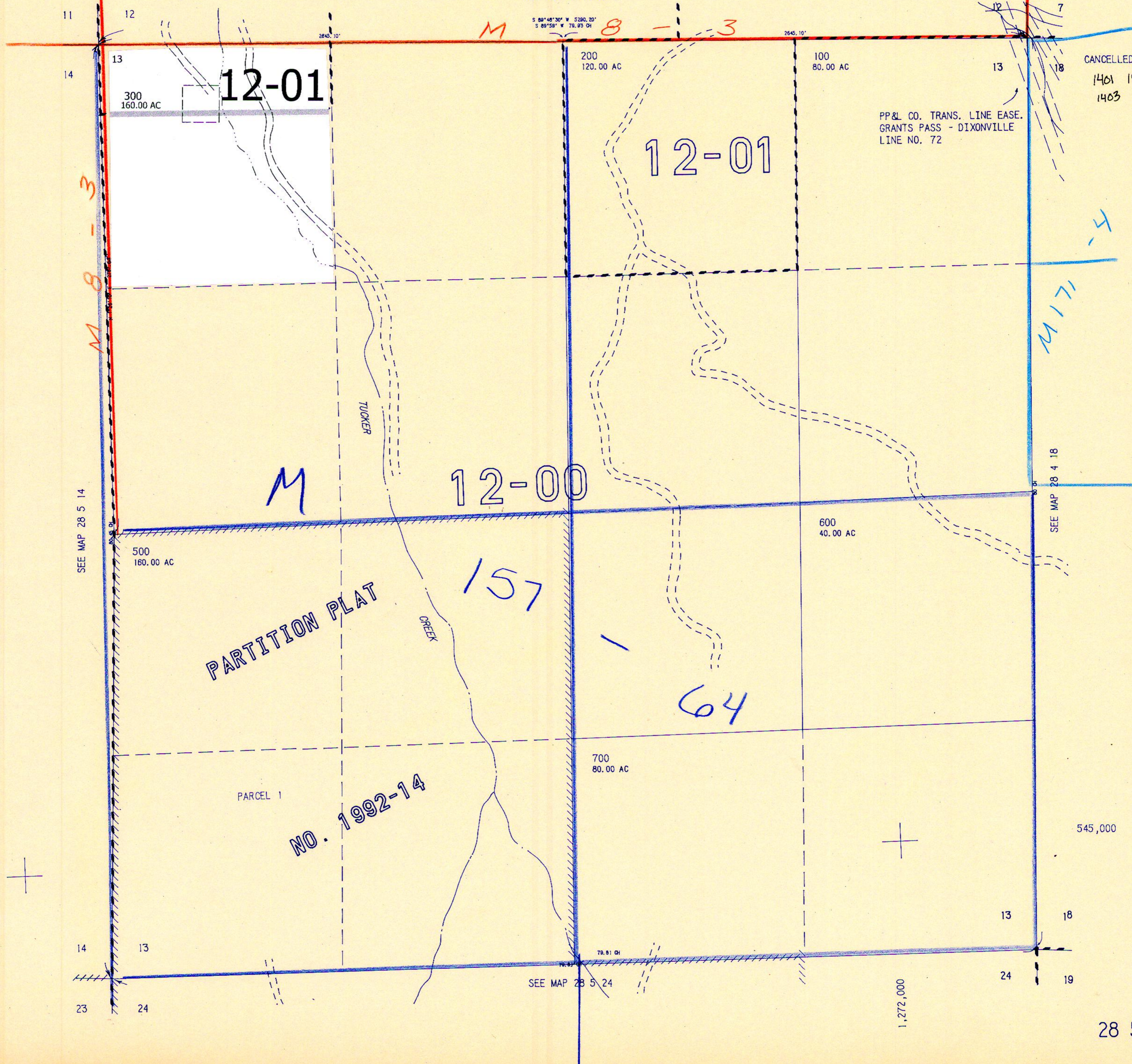
28 5 13

1" = 400'

REVISED ON
6/25/92

SEE MAP 28 5 12

S 89°48'30" W 5280.20'
S 89°58' W 79.93 CH



CANCELLED NO'S
1401 1501 1502
1403 400

PP&L CO. TRANS. LINE EASE.
GRANTS PASS - DIXONVILLE
LINE NO. 72

PARTITION PLAT

NO. 1992-14

SEE MAP 28 5 24

SEE MAP 28 4 18

545,000

1,272,000

28 5 13

7/92 580R