

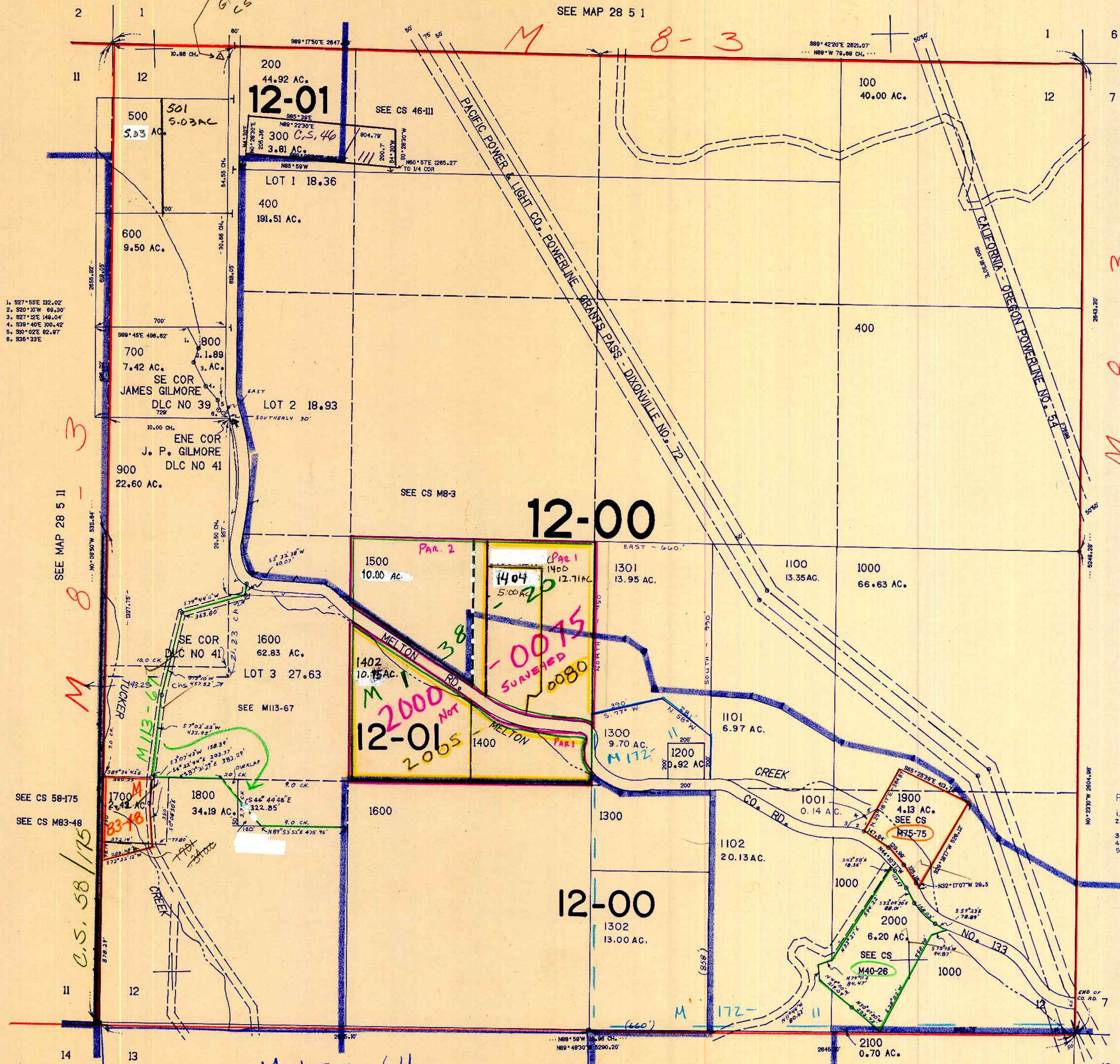
SECTION 12 T.28S. R.5W. W.M.
DOUGLAS COUNTY

28 5 12

THIS MAP WAS PREPARED FOR
ASSESSMENT PURPOSE ONLY.

1"=400'

REVISED ON
4-9-92



1. S27°55'E 132.02'
2. S20°10'W 69.30'
3. S27°12'E 149.04'
4. S38°40'E 100.42'
5. S90°02'E 82.97'
6. S56°33'E

Cancelled #5
1601, 1701

M 8 - 3

M 8 - 3

M 8 - 3

M 157-64

SEE MAP 28 5 13

M 8 - 3

SEE MAP 28 4 7

- PARCEL 1001
1. S. 25° 13' 17" W. - 132.43'
 2. S. 33° 78' - 95.03'
 3. N. 39° 47' E. - 30.09'
 4. N. 67° 45' E. - 64.10'
 5. N. 59° 02' E. - 91.55'

550.000

28 5 12

4/92
Com

273.000