

SECTION 10 T.28S. R.5W. W.M.  
DOUGLAS COUNTY

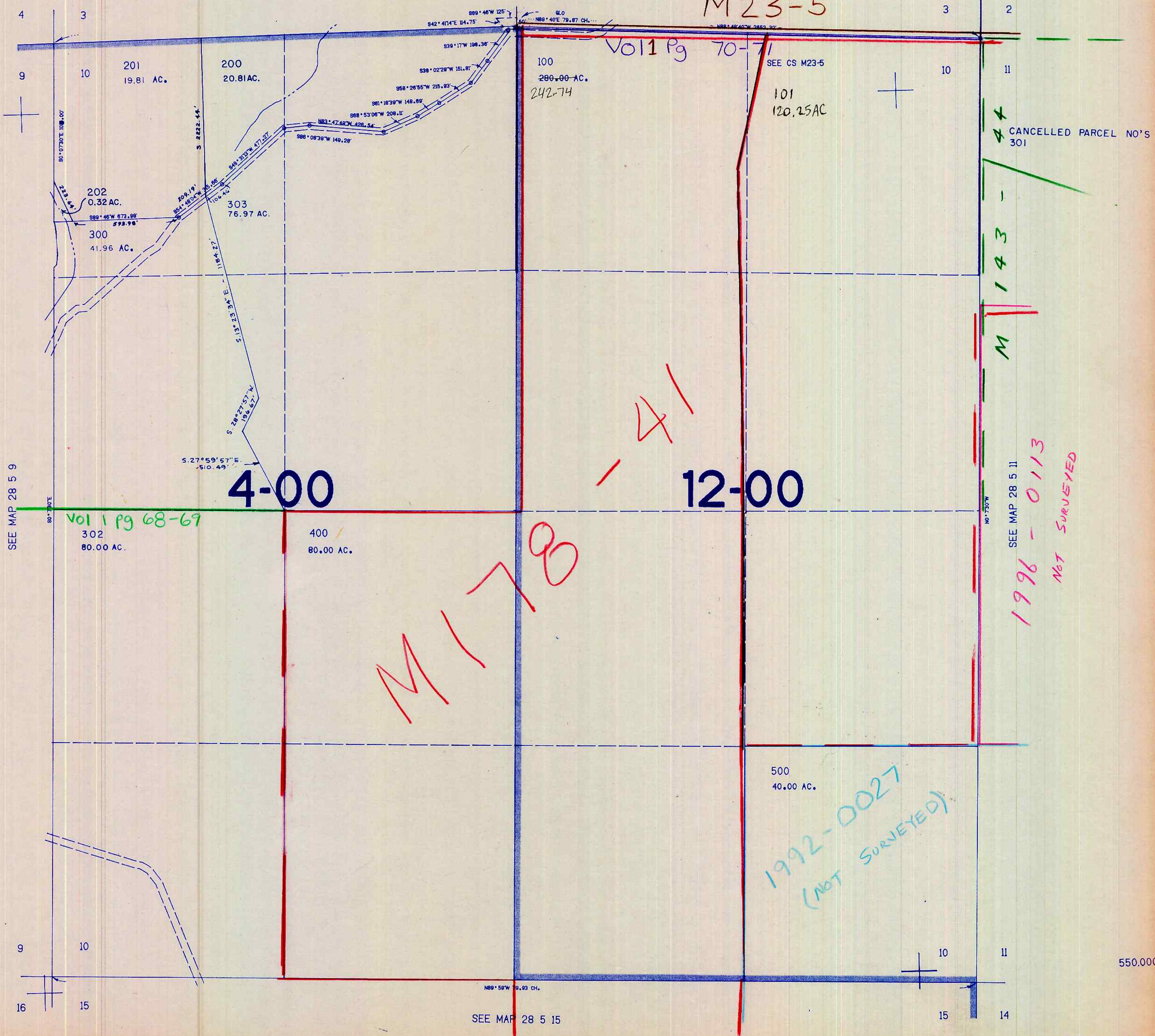
28 5 10

THIS MAP WAS PREPARED FOR  
ASSESSMENT PURPOSE ONLY.

1"=400'

SEE MAP 28 5 3

M23-5



550.000

28 5 10

12/88  
T.F.V.

1.262.000