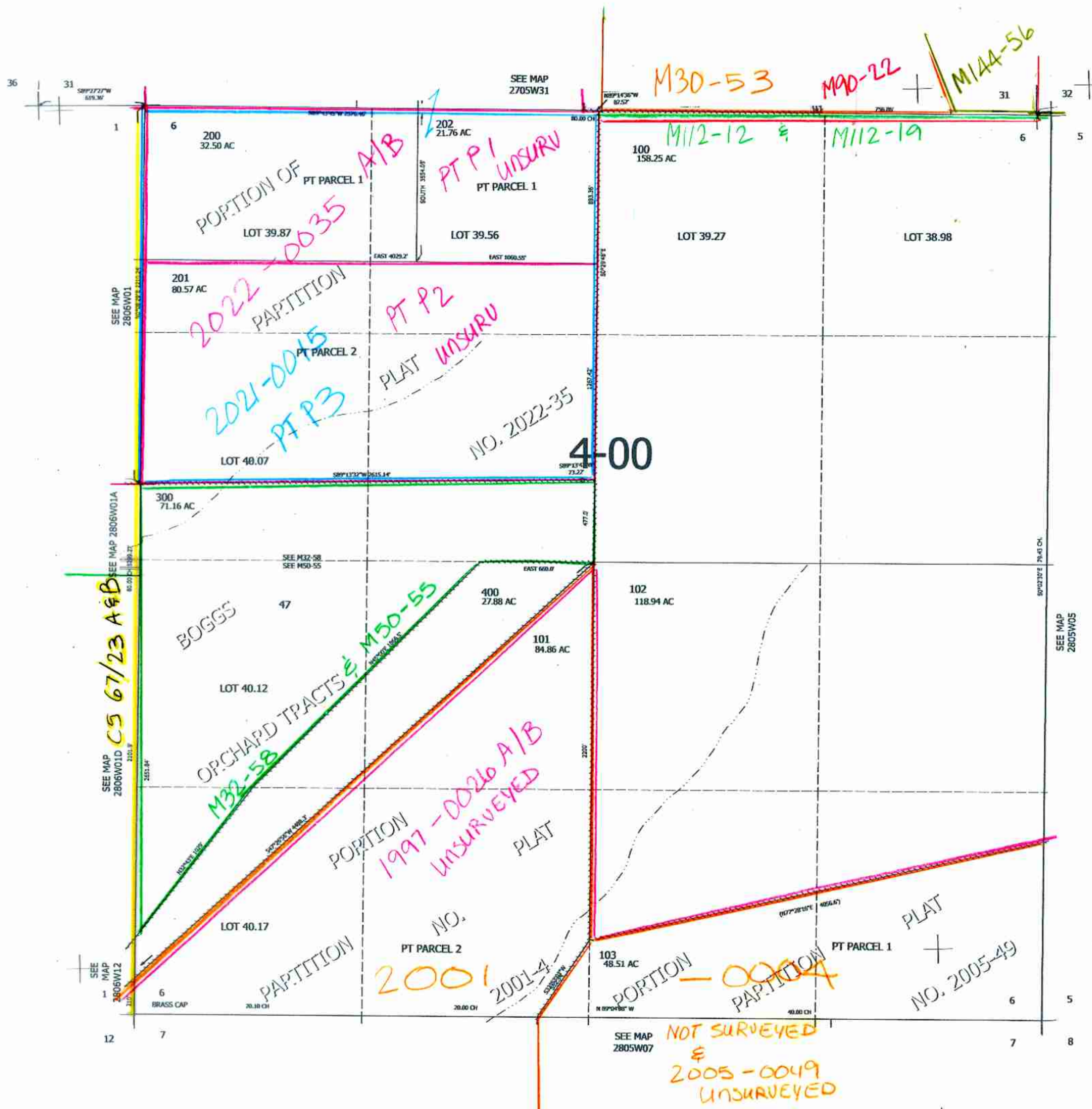


THIS MAP WAS PREPARED FOR ASSESSMENT PURPOSE ONLY.

Upper Left:
123°21'4"W 43°10'22"N
4160887E 561816N ft.

SEC.06 T.28S. R.05W. W.M.
DOUGLAS COUNTY
1" = 400'

CANCELLED NOS:



SEE MAP 2806W01A
2806W01D
2806W12
2806W12

SEE MAP 2705W31

SEE MAP 2806W01

SEE MAP 2806W01A
2806W01D
2806W12
2806W12

SEE MAP 2805W07

SEE MAP 2805W05

6/2023 JC

28050

Lower Right:
123°19'15"W 43°9'16"N
4168736E 554860N ft.