

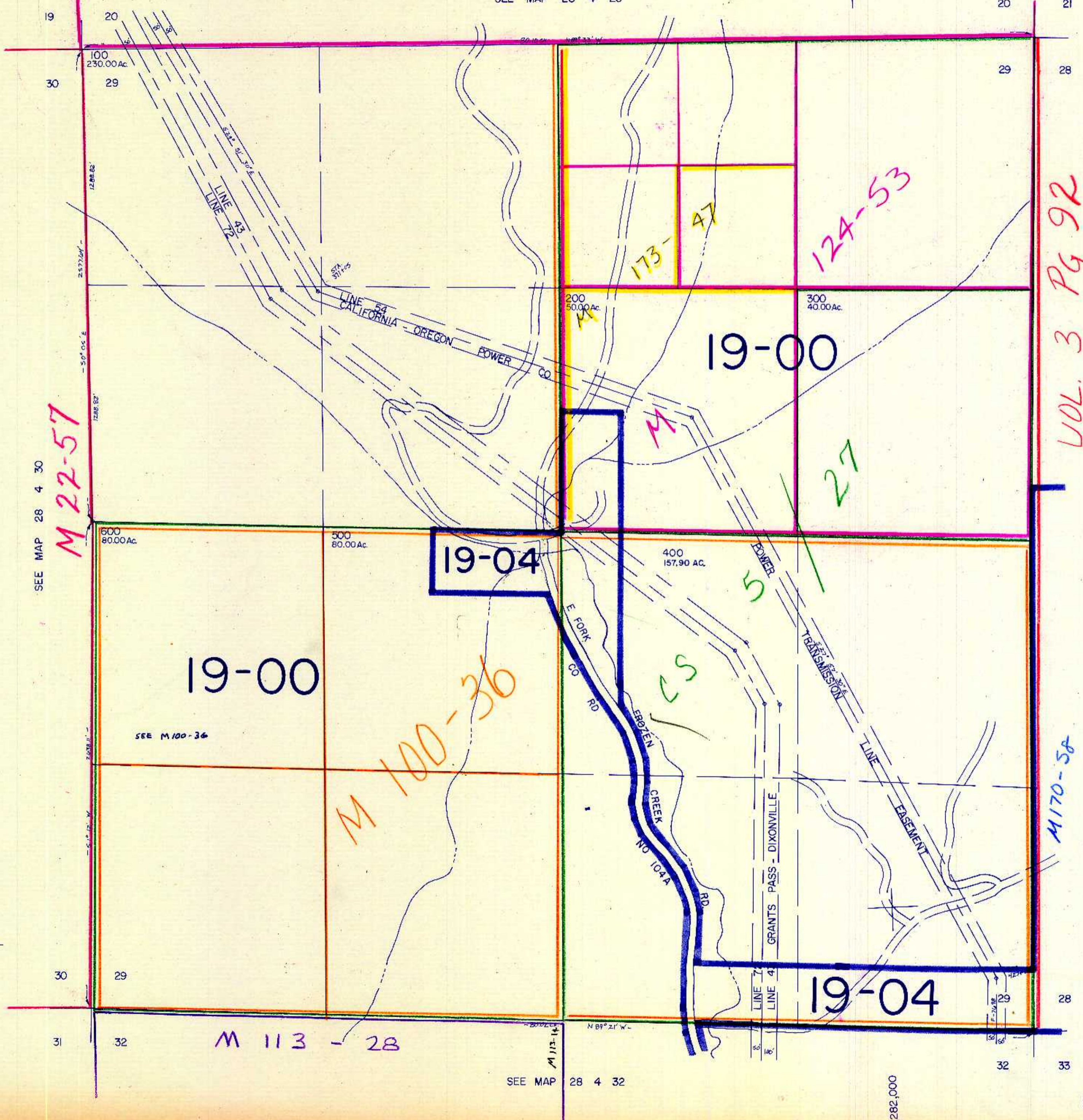
THIS MAP WAS PREPARED FOR ASSESSMENT PURPOSE ONLY.

SECTION 29 T.28S. R. 4 W. W.M.
DOUGLAS COUNTY

1" = 400'

REVISED ON
4-30-91

SEE MAP 28 4 20



SEE MAP 28 4 30
M 22-57

100L. 3 PG 92

SEE MAP 28 4 28

M 170-58

M 100-36

M 113-28

SEE MAP 28 4 32

*5191
com*