

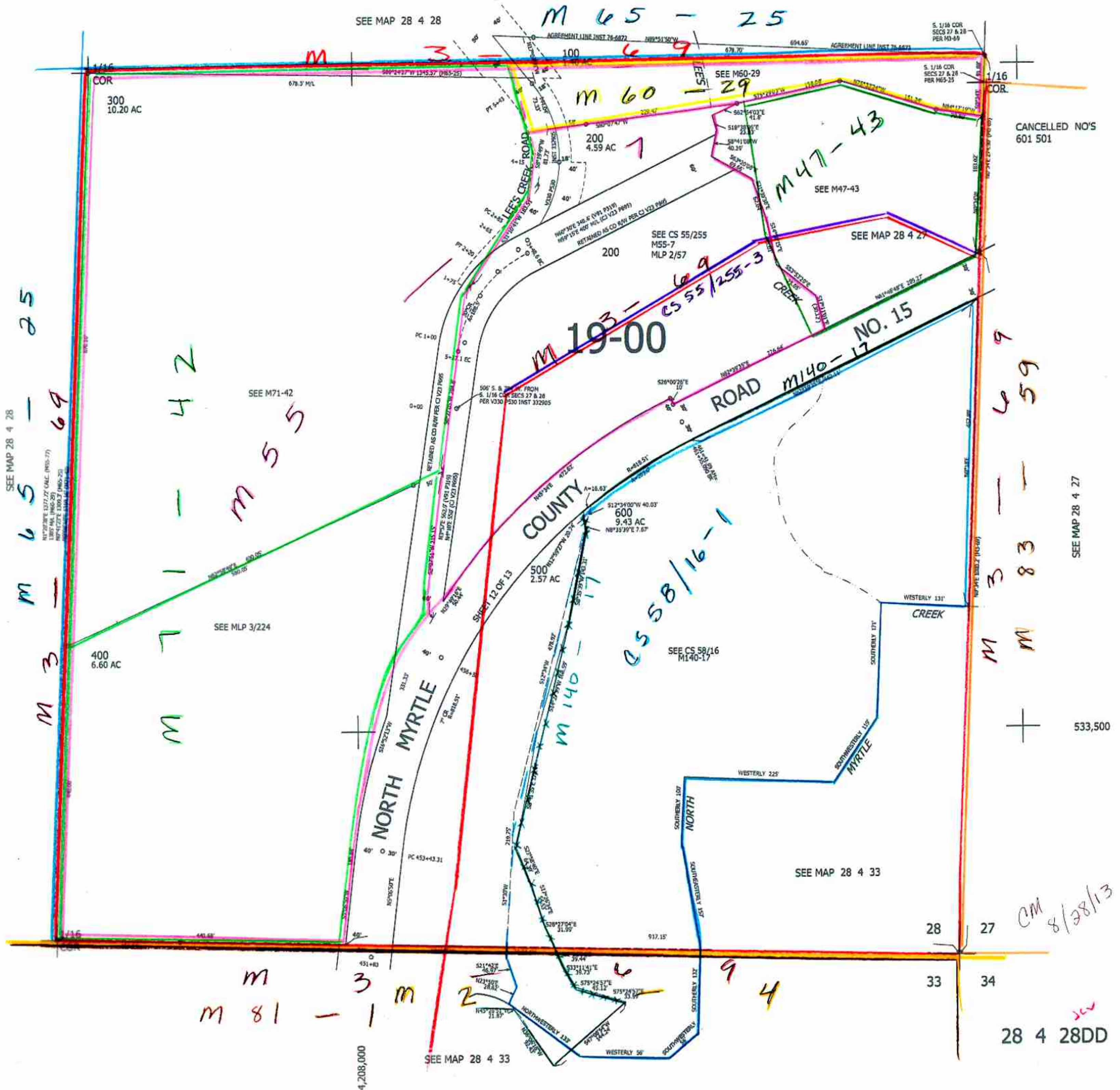
THIS MAP WAS PREPARED FOR ASSESSMENT PURPOSE ONLY.

SE1/4 SE1/4 SEC.28 T.28S. R.4W. W.M. DOUGLAS COUNTY

REVISED ON 7-3-13

28 4 28DD

1" = 200'



SEE MAP 28 4 27

533,500

CM 8/28/13

28 4 28DD