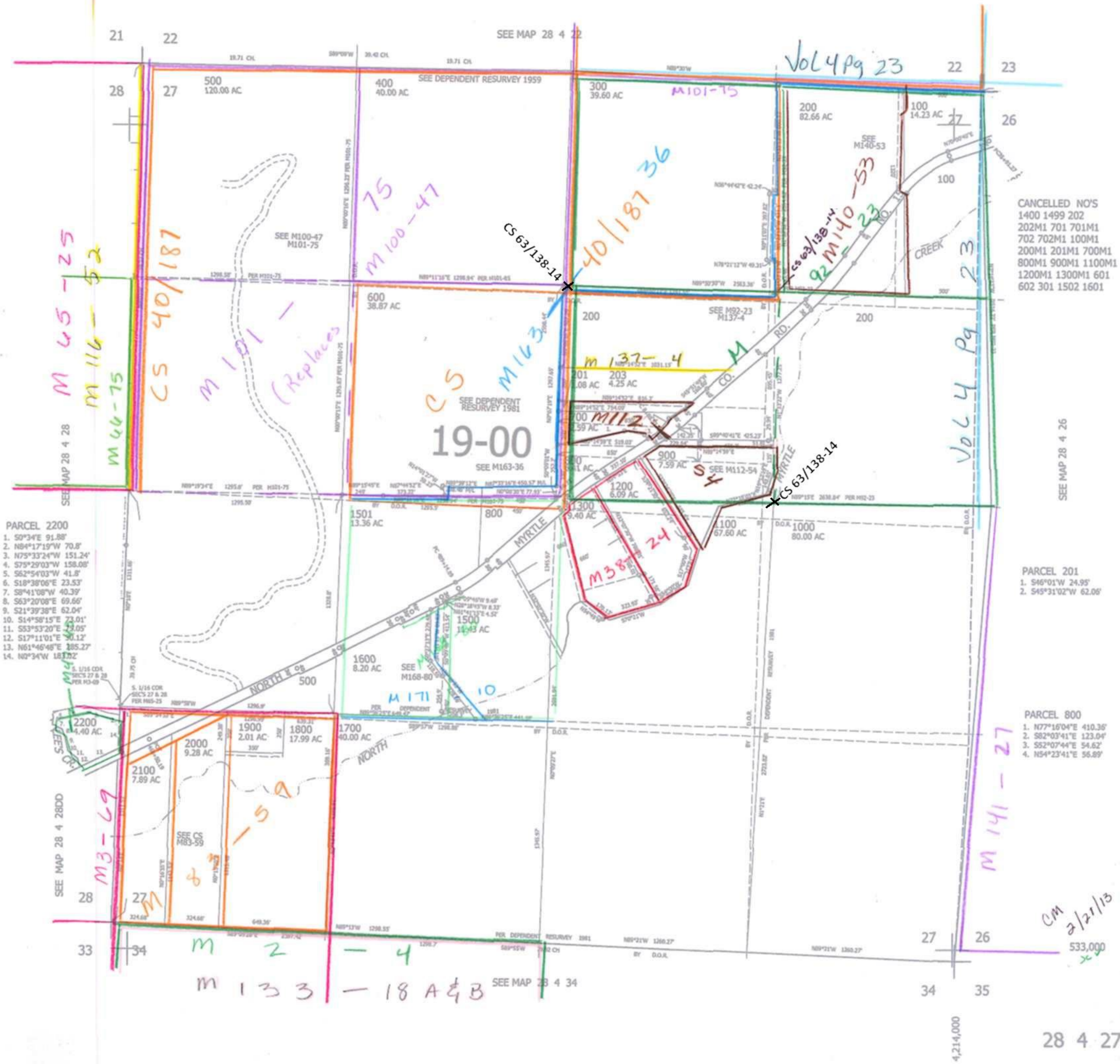


THIS MAP WAS PREPARED FOR ASSESSMENT PURPOSE ONLY.

SEC.27 T.28S. R.4W. W.M. DOUGLAS COUNTY 1" = 400'

REVISED ON 3-17-16

28 4 27



CANCELLED NO'S
 1400 1499 202
 202M1 701 701M1
 702 702M1 100M1
 200M1 201M1 700M1
 800M1 900M1 1100M1
 1200M1 1300M1 601
 602 301 1502 1601

PARCEL 2200
 1. S0°34'E 91.88'
 2. N84°17'19"W 70.8'
 3. N75°33'24"W 151.24'
 4. S75°29'03"W 158.08'
 5. S62°54'03"W 41.8'
 6. S18°38'06"E 23.53'
 7. S8°41'08"W 40.39'
 8. S63°20'08"E 69.66'
 9. S21°39'38"E 62.04'
 10. S14°58'15"E 73.01'
 11. S53°53'20"E 43.05'
 12. S17°11'01"E 84.12'
 13. N61°46'48"E 185.27'
 14. N0°34"W 181.02'

PARCEL 201
 1. S46°01'W 24.95'
 2. S45°31'02"W 62.08'

PARCEL 800
 1. N77°16'04"E 410.36'
 2. S82°03'41"E 123.04'
 3. S52°07'44"E 54.62'
 4. N54°23'41"E 56.89'

CM
 2/21/13
 533,000
 x4

28 4 27