

SECTION 20 T.28S. R. 4 W. W.M.  
DOUGLAS COUNTY

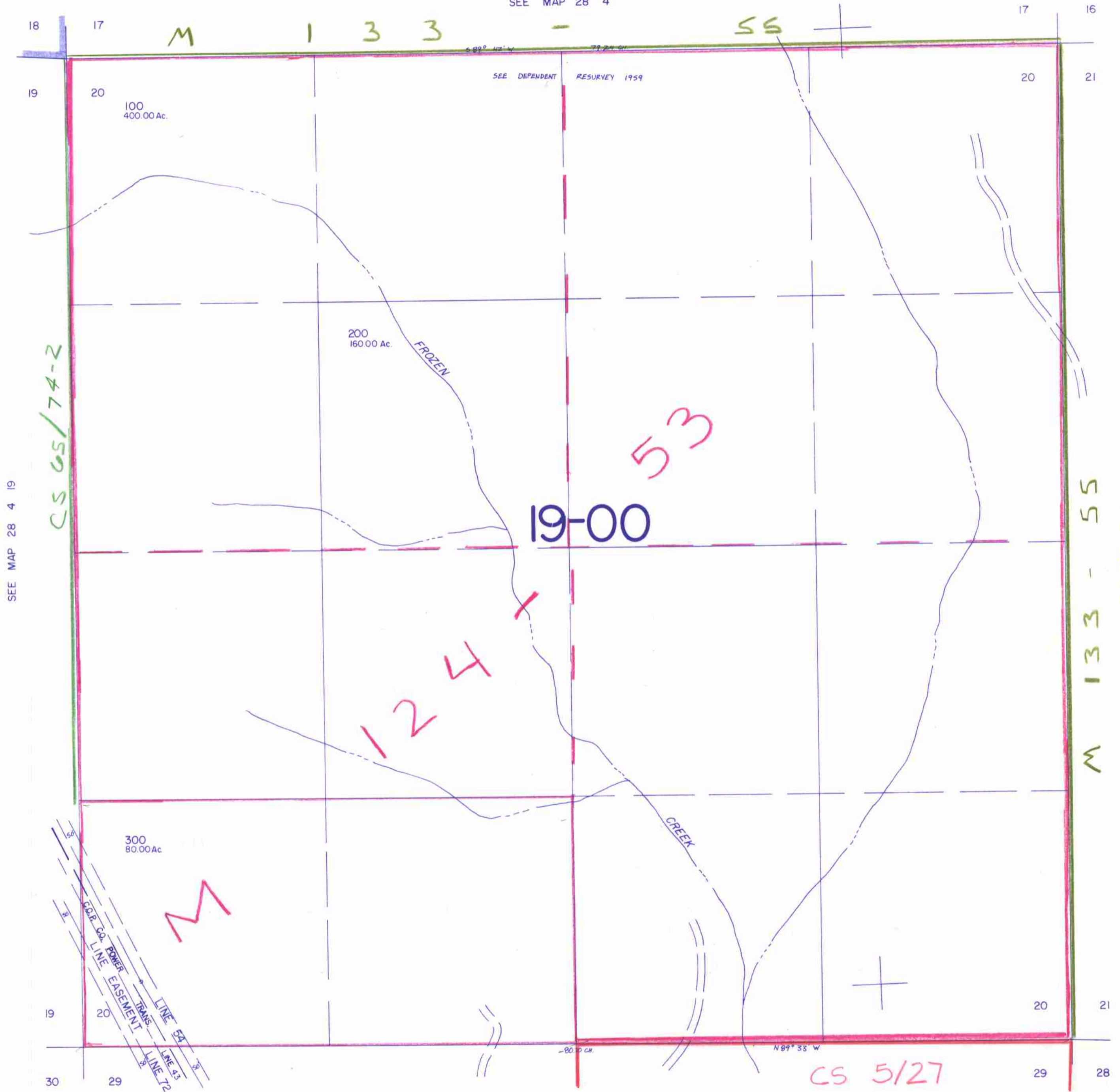
REVISED ON  
4-8-92

28 4 20

THIS MAP WAS PREPARED FOR  
ASSESSMENT PURPOSE ONLY.

1" = 400'

SEE MAP 28 4



SEE MAP 28 4 19

SEE MAP 28 4 21

SEE MAP 28 4 29

1,282,000

539,000

28 4 20

Jenn  
v nw 7/1