

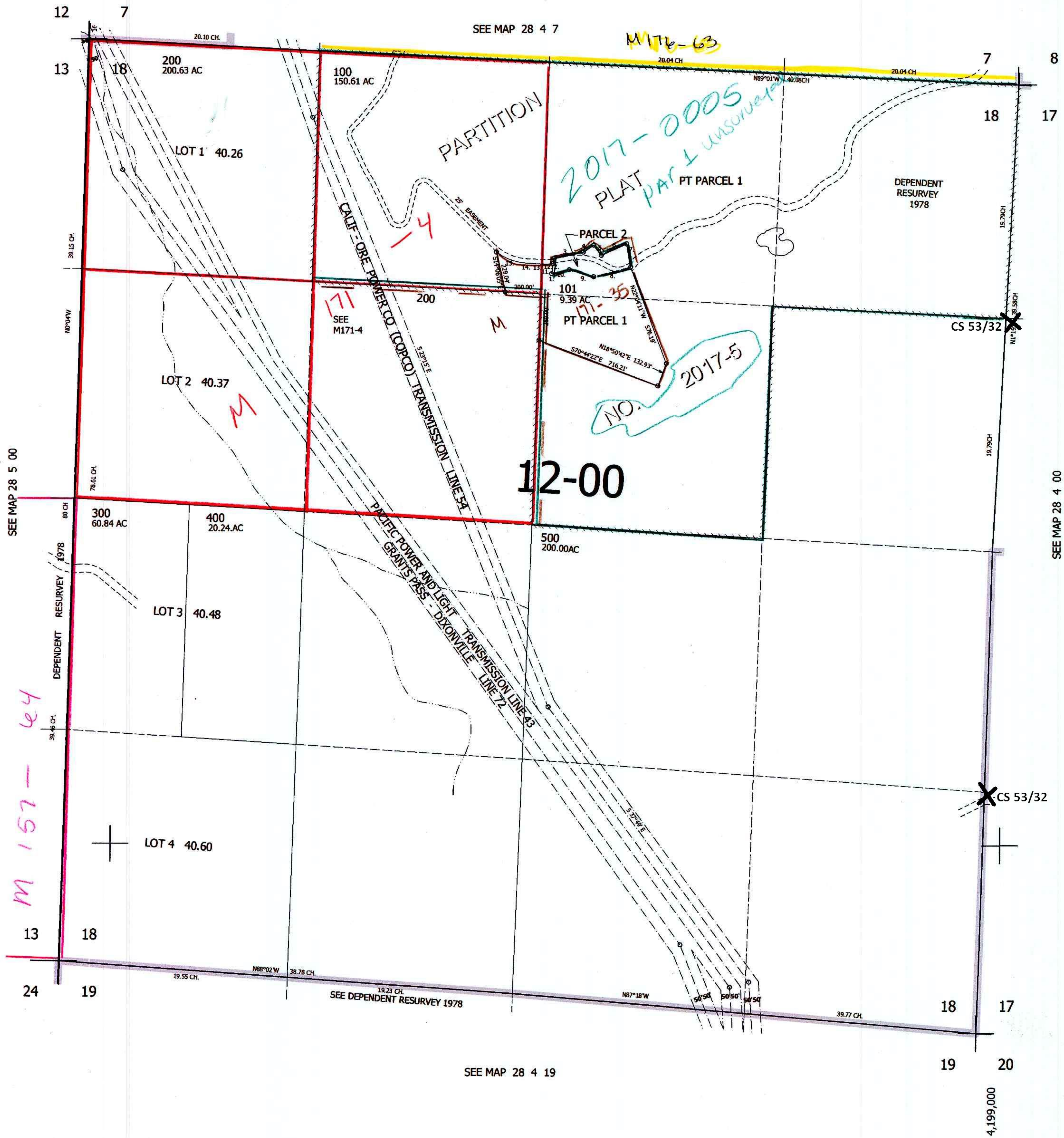
THIS MAP WAS PREPARED FOR ASSESSMENT PURPOSE ONLY.

SEC.18 T.28S. R.4W. W.M.
DOUGLAS COUNTY

REVISED ON
6-13-17

28 4 18

1" = 400'



CANCELLED NO'S
102

PARCEL 101

1. N26°31'30"E 128.07'
- FROM C N 1/16 CORNER
2. N7°28'52"E 87.08'
3. N76°27'10"E 168.06'
4. N54°08'51"W 69.98'
5. S38°34'34"E 71.83'
6. N63°49'53"E 160.37'
7. S9°57'23"E 134.35'
8. S74°07'14"W 214.71'
9. N75°34'04"W 142.41'
10. S75°27'04"W 102.24'
11. N7°28'52"E 88.51'
12. S77°25'57"W 0.31'
13. A=51.36 R=212.5'
- LC= 584°21'21"W 51.23'
14. N88°43'15"W 95.85'
15. A=185.37 R=312.5'
- LC N71°43'40"W 182.66'

SEE MAP 28 5 00

SEE MAP 28 4 00

M 157-64

545,000

SEE MAP 28 4 19

28 4 18

4,199,000