

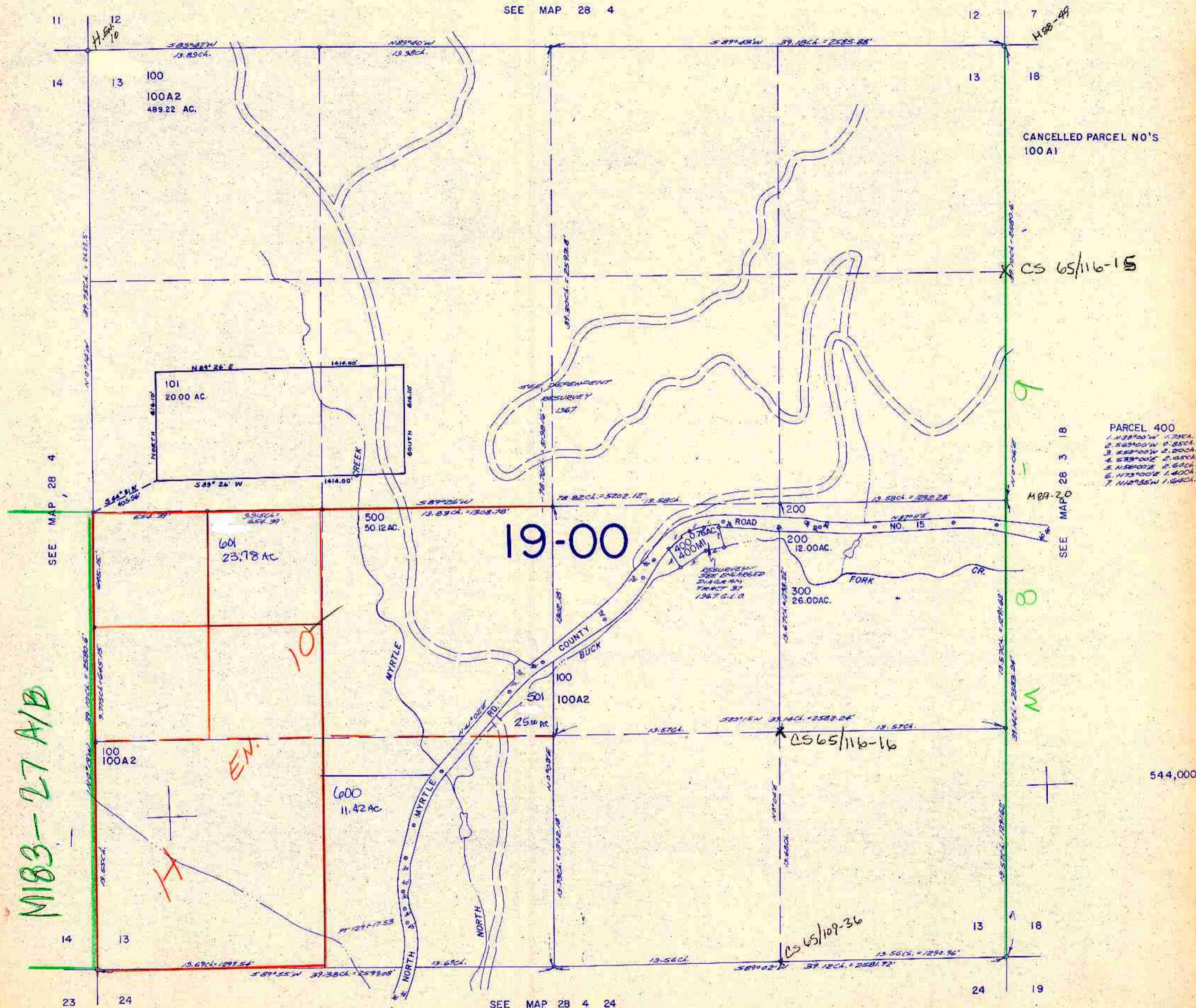
THIS MAP WAS PREPARED FOR  
ASSESSMENT PURPOSE ONLY.

SECTION 13 T.28S. R. 4 W. W.M.  
DOUGLAS COUNTY

1" = 400'

28 4 13

SEE MAP 28 4



SEE MAP 28 4

CANCELED PARCEL NO'S  
100 A1

CS 65/116-15

- PARCEL 400
- 1. N 89° 00' W 1.75 AC.
  - 2. S 69° 00' W 0.85 AC.
  - 3. S 69° 00' W 2.80 AC.
  - 4. S 83° 00' E 2.45 AC.
  - 5. N 83° 00' E 2.80 AC.
  - 6. N 73° 00' E 1.40 AC.
  - 7. N 12° 55' W 1.60 AC.

SEE MAP 28 3 18

544,000

SEE MAP 28 4 24

28 4 13

1,304,000

3/18