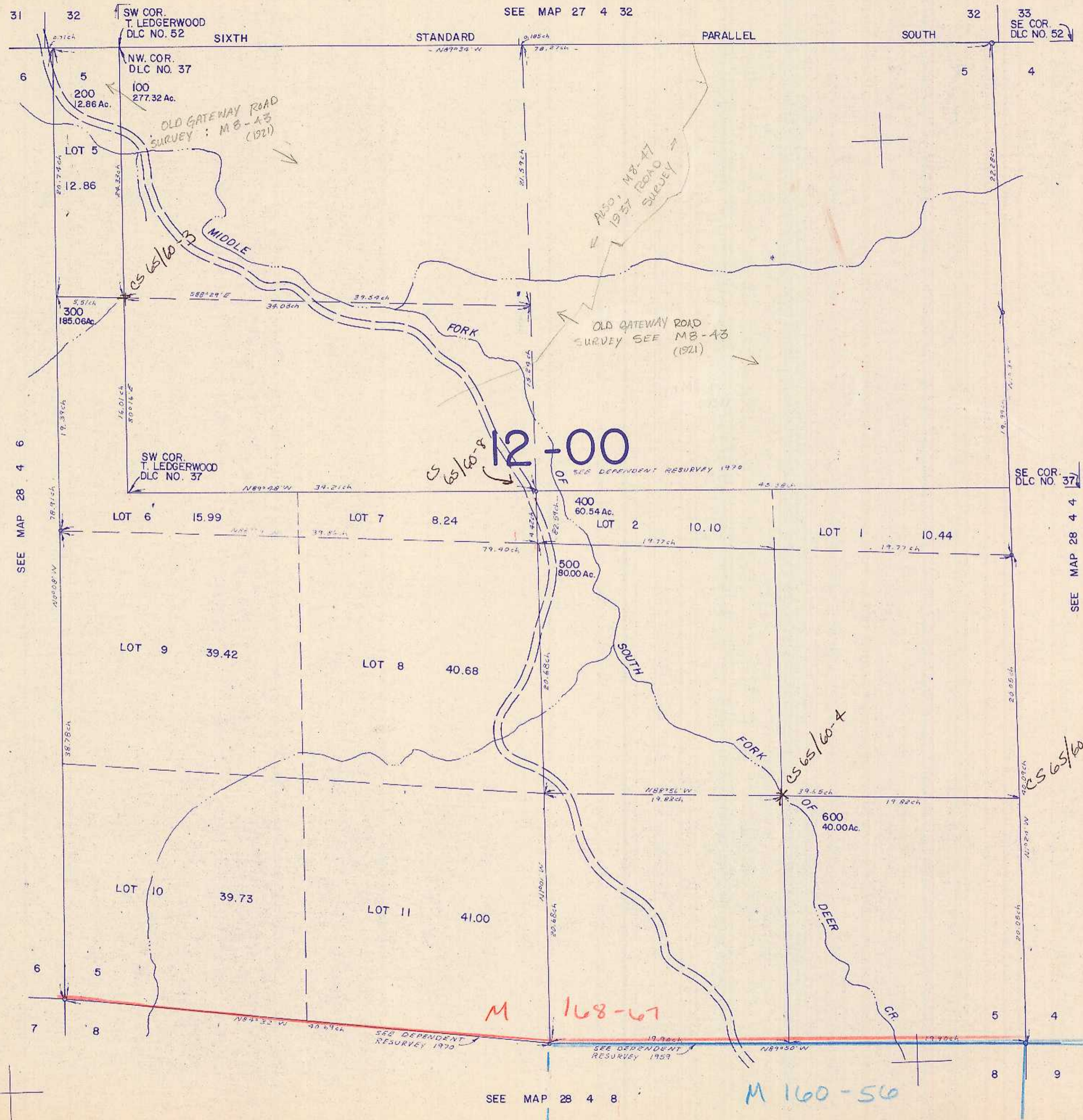


SECTION 5 T.28S. R. 4 W. W.M.
DOUGLAS COUNTY

1" = 400'

THIS MAP WAS PREPARED FOR
ASSESSMENT PURPOSE ONLY.



SEE MAP 28 4 6

SEE MAP 28 4 4

SEE MAP 28 4 8

1,283,000

5/85
5/c