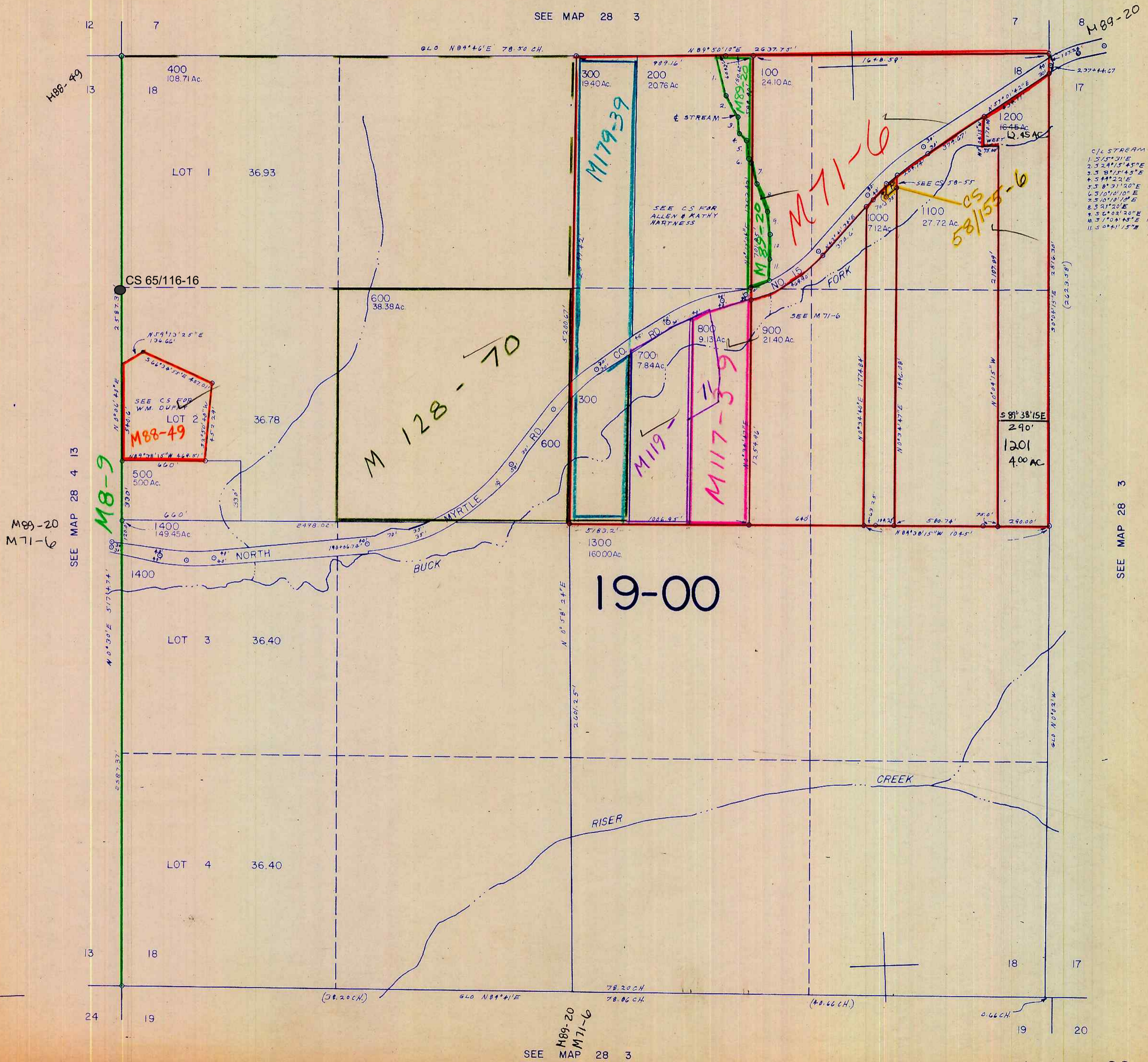


SECTION 18 T.28S. R.3W. W.M.
DOUGLAS COUNTY

THIS MAP WAS PREPARED FOR
ASSESSMENT PURPOSE ONLY.

1" = 400'

SEE MAP 28 3



C/L STREAM
1.515°31'E 22.66'
2.524°17'45"E 134.14'
3.381°14'45"E 92.10'
4.544°22'E 64.24'
5.58°31'20"E 107.44'
6.510°10'10"E 22.24'
7.510°10'10"E 121.88'
8.521°20"E 144.18'
9.51°02'20"E 137.03'
10.51°04'45"E 134.47'
11.50°41'57"E 134.67'

SEE MAP 28 4 13

SEE MAP 28 3

SEE MAP 28 3

1,308,000

5/85
CND