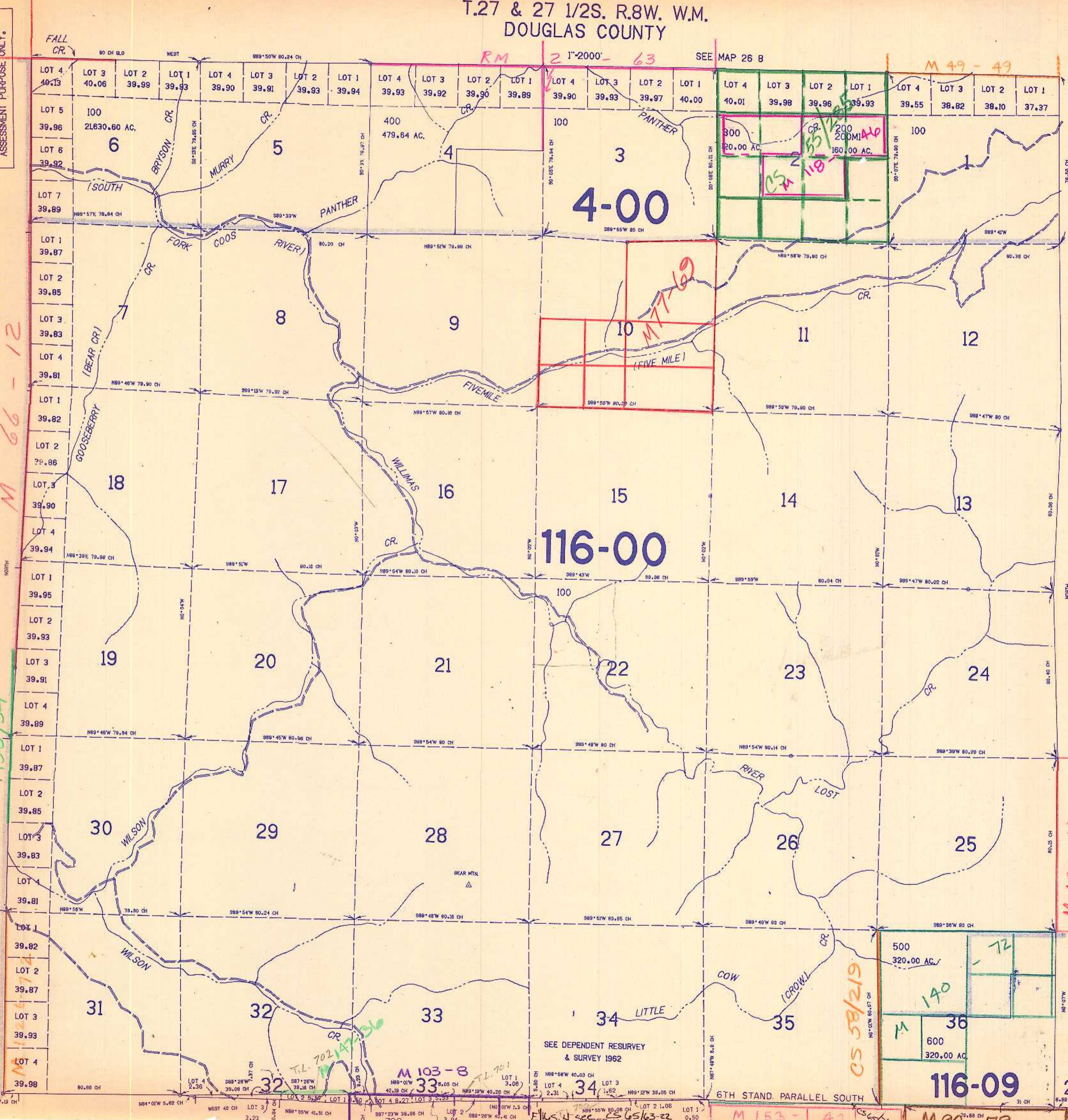


T.27 & 27 1/2S. R.8W. W.M.  
DOUGLAS COUNTY

THIS MAP WAS PREPARED FOR  
ASSESSMENT PURPOSE ONLY.

COUNTY

COOS



M 66-12

M 58/54

M 126-26

RM 2 1-2000-63

M 49-49

4-00

116-00

116-09

SEE MAP 27 7

M 138-66

M 58/219

SEE DEPENDENT RESURVEY  
& SURVEY 1962

6TH STAND. PARALLEL SOUTH

6185  
CND