

THIS MAP WAS PREPARED FOR ASSESSMENT PURPOSE ONLY.

SW1/4 SEC.36 T.27S. R.7W. W.M. DOUGLAS COUNTY

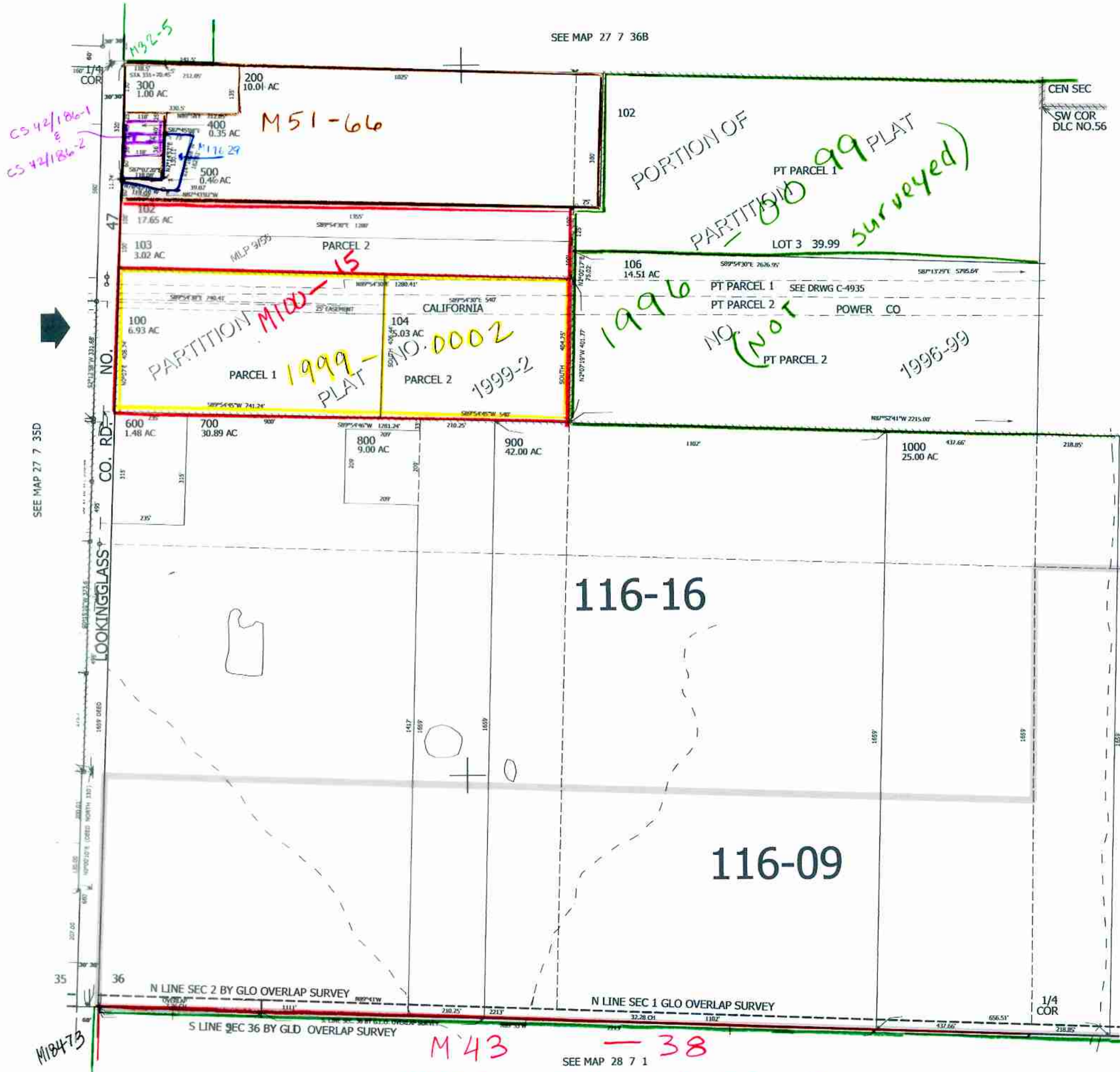
REVISED ON 6-18-19

27 7 36C

1" = 200'

CANCELLED NO'S 105 101 201

SEE MAP 27 7 36B



116-16

116-09

M43 - 38

M56-32 & M59-7

SEE MAP 28 7 1

SEE MAP 27 7 36

563,000

4,128,000

7-3-19 JCV 27 7 36C