

THIS MAP WAS PREPARED FOR ASSESSMENT PURPOSE ONLY.

SEC.32 T.27S. R.07W. W.M. DOUGLAS COUNTY 1" = 400'

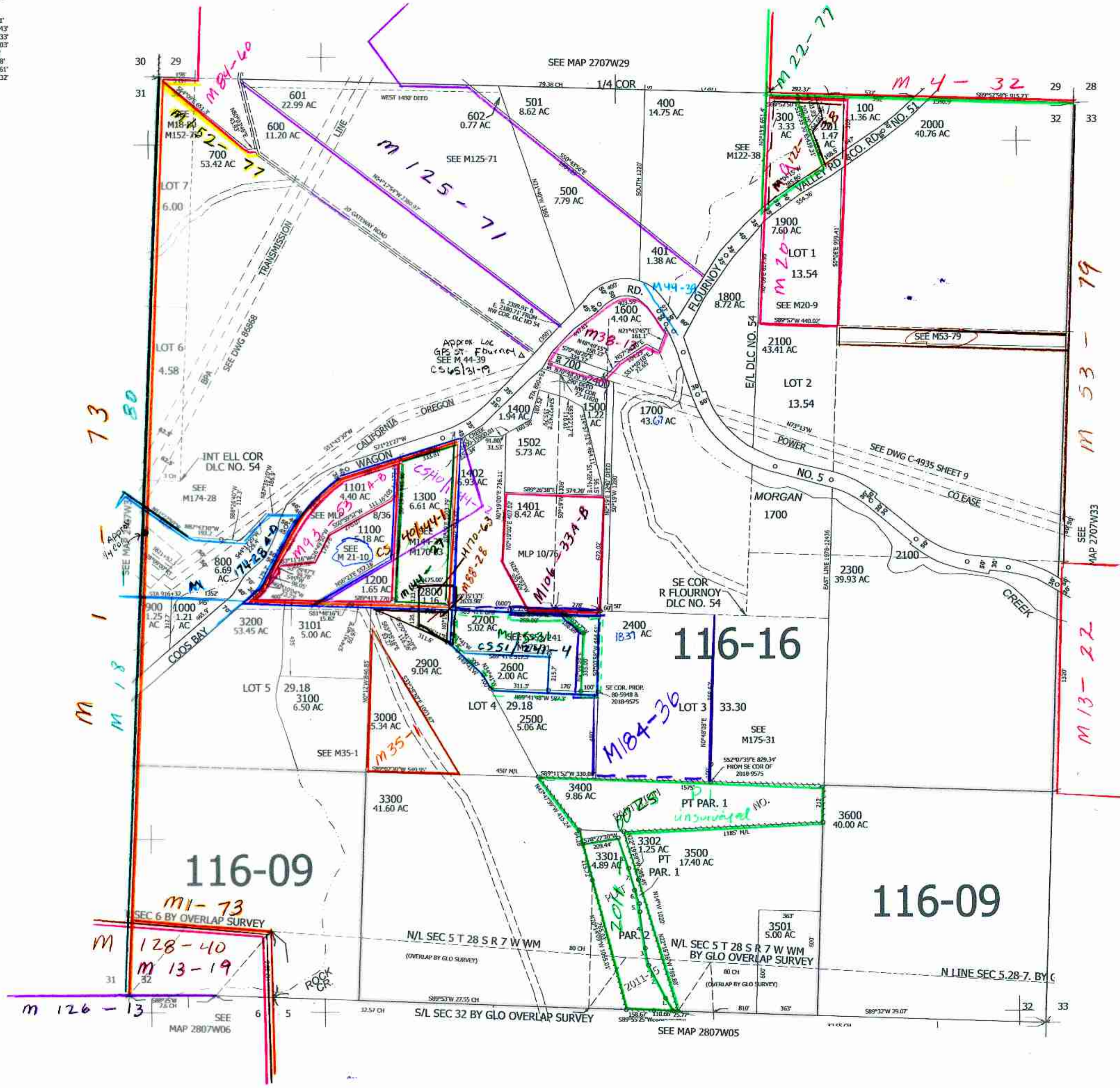
Date Exported 2024-08-26

270732

CANCELLED NOS: 700M1 1501 2000M1 2400M1 1501 2000M1 700M2 1600M2 1800M1 2100M1 2200M1 2400M2 2500M1 2600M1 2700M1 2800M1 3000M1 3300M1 3400M1 3501M1 3502M1 3503M1 3504M1 3505M1 3506M1 3507M1 3508M1 3509M1 3510M1 3511M1 3512M1 3513M1 3514M1 3515M1 3516M1 3517M1 3518M1 3519M1 3520M1 3521M1 3522M1 3523M1 3524M1 3525M1 3526M1 3527M1 3528M1 3529M1 3530M1 3531M1 3532M1 3533M1 3534M1 3535M1 3536M1 3537M1 3538M1 3539M1 3540M1 3541M1 3542M1 3543M1 3544M1 3545M1 3546M1 3547M1 3548M1 3549M1 3550M1 3551M1 3552M1 3553M1 3554M1 3555M1 3556M1 3557M1 3558M1 3559M1 3560M1 3561M1 3562M1 3563M1 3564M1 3565M1 3566M1 3567M1 3568M1 3569M1 3570M1 3571M1 3572M1 3573M1 3574M1 3575M1 3576M1 3577M1 3578M1 3579M1 3580M1 3581M1 3582M1 3583M1 3584M1 3585M1 3586M1 3587M1 3588M1 3589M1 3590M1 3591M1 3592M1 3593M1 3594M1 3595M1 3596M1 3597M1 3598M1 3599M1 3600M1

PARCEL 2400
1. N9°45'15"W 15.24'
2. S89°33'19"E 81.23'
3. S89°32'51"E 429.20'

PP 2011-25
1. N36°24'52"W 87.01'
2. N31°55'10"W 213.43'
3. N17°08'22"W 101.33'
4. N13°22'38"W 211.03'
5. N8°47'10"W 47.19'
6. N23°59'10"W 81.48'
7. N19°59'58"W 129.61'
8. N24°31'35"W 184.32'



cm a/6/14 270732

Lower Right:
123°32'23"W 43°10'8"N
4110531E 562234N ft.