

SECTION 31 T.27S. R.7W. W.M.
DOUGLAS COUNTY

27 7 31

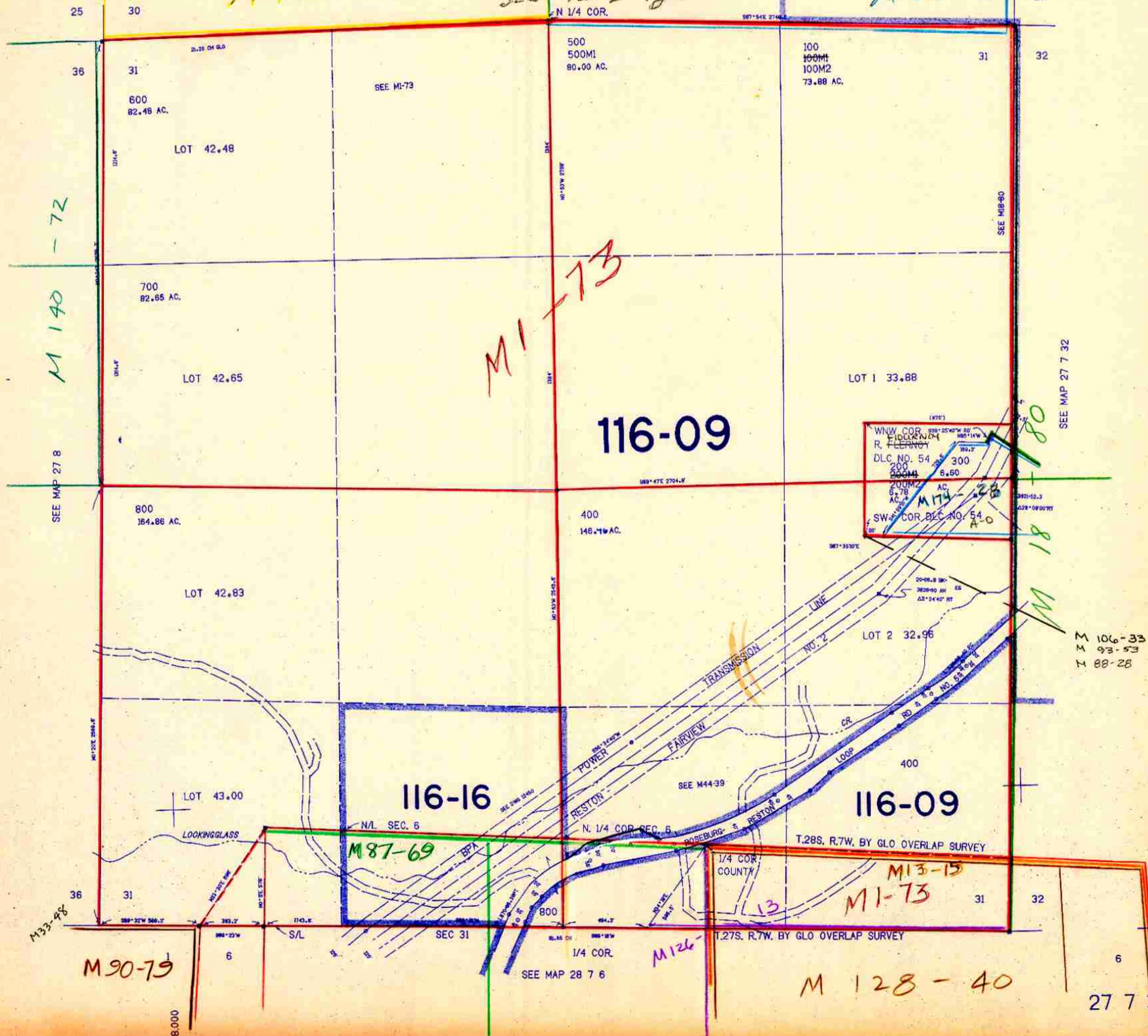
THIS MAP WAS PREPARED FOR
ASSESSMENT PURPOSE ONLY.

1"=400'

M 138 - 66

SEE MAP 27 7 30
SEE Vol 2 Pg 142
N 1/4 COR.

2024-0003
A-C



116-09

116-16

116-09

M 90-79

M 128-40

27 7 31

6/18/85
C. W. 2/20