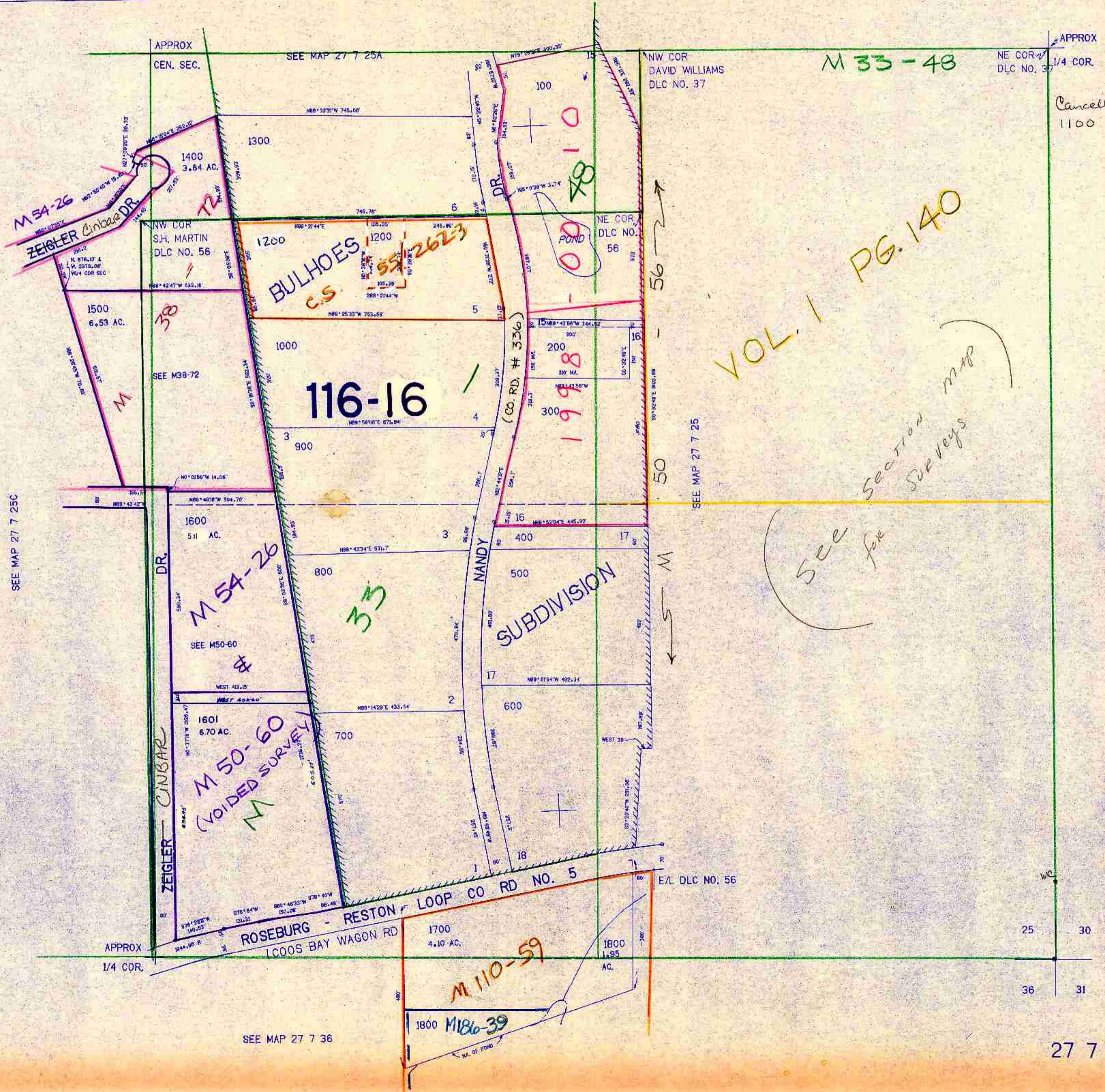


SE 1/4 SEC. 25 T.27S. R.7W. W.M.
DOUGLAS COUNTY

27 7 25D

THIS MAP WAS PREPARED FOR
ASSESSMENT PURPOSE ONLY.

1"=200'



VOL. 1 PG. 140

See for Section Surveys

See for

Cancelled Nos
1100

568,000

1206,000

SEE MAP 27 7 36

27 7 25D

488 TF