

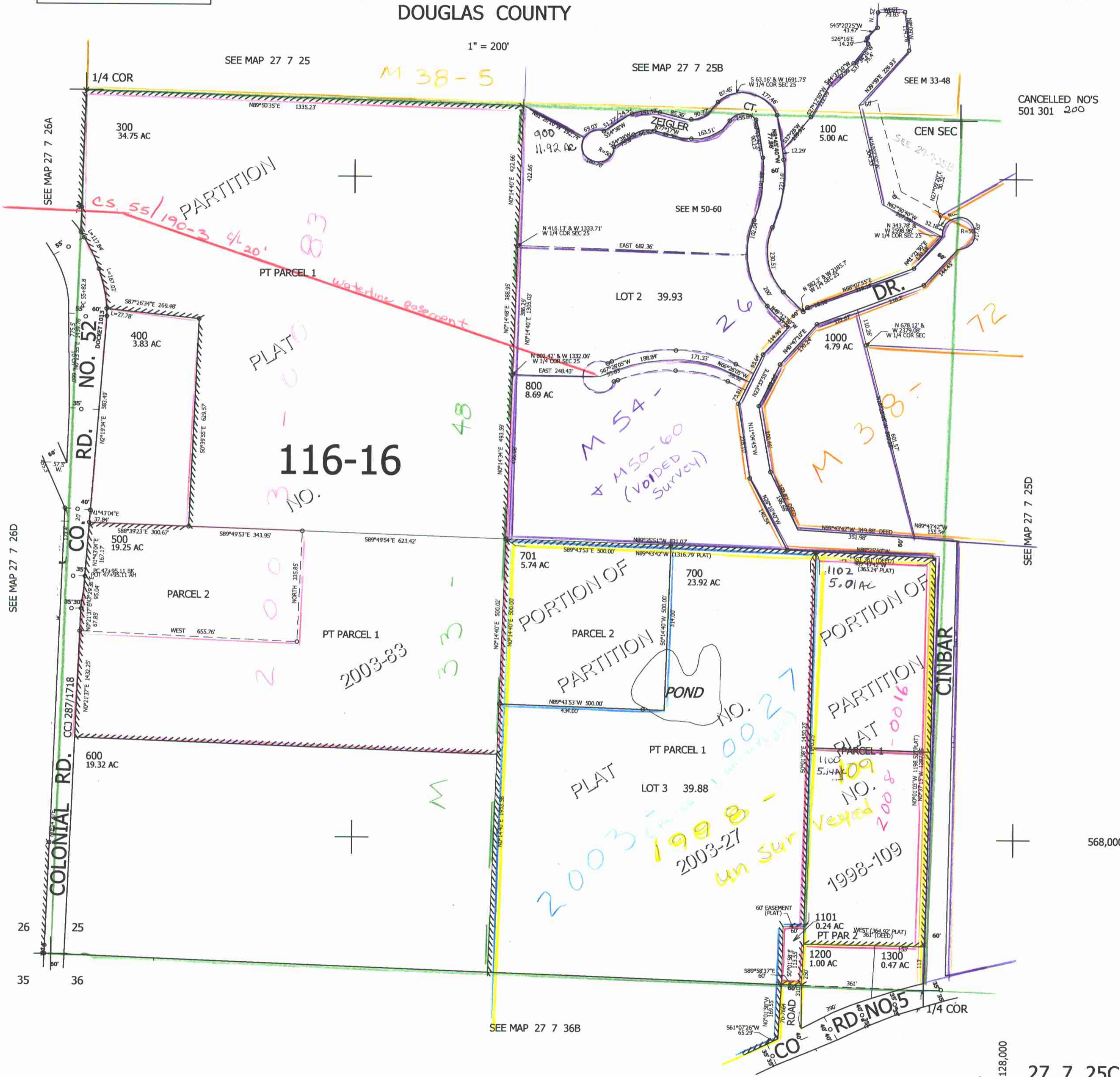
THIS MAP WAS PREPARED FOR ASSESSMENT PURPOSE ONLY.

SW1/4 SEC.25 T.27S. R.7W. W.M. DOUGLAS COUNTY

REVISED ON
6-15-04

27 7 25C

1" = 200'



CANCELLED NO'S
501 301 200

SEE MAP 27 7 25D

SEE MAP 27 7 36B

27 7 25C
4,128,000
2/04 JC
MCW