

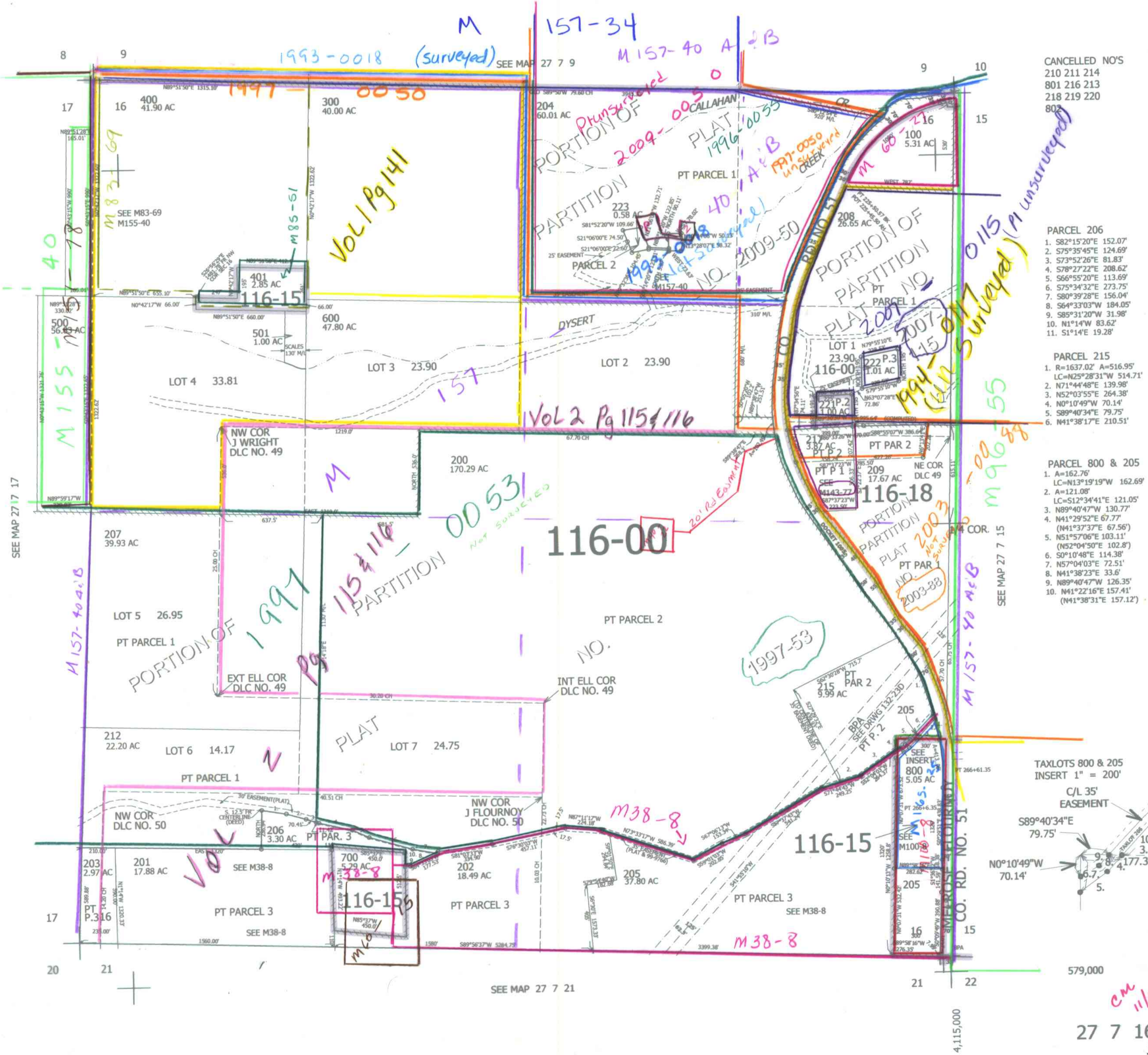
THIS MAP WAS PREPARED FOR ASSESSMENT PURPOSE ONLY.

SEC.16 T.27S. R.7W. W.M. DOUGLAS COUNTY

1" = 400'

REVISED ON 5-3-13

27 7 16



CANCELLED NO'S
 210 211 214
 801 216 213
 218 219 220
 803

PARCEL 206
 1. S82°15'20"E 152.07'
 2. S75°35'45"E 124.69'
 3. S73°52'26"E 81.83'
 4. S78°27'22"E 208.62'
 5. S66°55'20"E 113.69'
 6. S75°34'32"E 273.75'
 7. S80°39'28"E 156.04'
 8. S64°33'03"W 184.05'
 9. S85°31'20"W 31.98'
 10. N1°14'W 83.62'
 11. S1°14'E 19.28'

PARCEL 215
 1. R=1637.02' A=516.95'
 LC=N25°28'31"W 514.71'
 2. N71°44'48"E 139.98'
 3. N52°03'55"E 264.38'
 4. N0°10'49"W 70.14'
 5. S89°40'34"E 79.75'
 6. N41°38'17"E 210.51'

PARCEL 800 & 205
 1. A=162.76'
 LC=N13°19'19"W 162.69'
 2. A=121.08'
 LC=S12°34'41"E 121.05'
 3. N89°40'47"W 130.77'
 4. N41°29'52"E 67.77'
 5. N51°57'06"E 103.11'
 6. S0°10'48"E 114.38'
 7. N57°04'03"E 72.51'
 8. N41°38'23"E 33.6'
 9. N89°40'47"W 126.35'
 10. N41°22'16"E 157.41'
 (N41°38'31"E 157.12')

TAXLOTS 800 & 205
 INSERT 1" = 200'



27 7 16

CM 11/6/12 JP