

THIS MAP WAS PREPARED FOR ASSESSMENT PURPOSE ONLY.

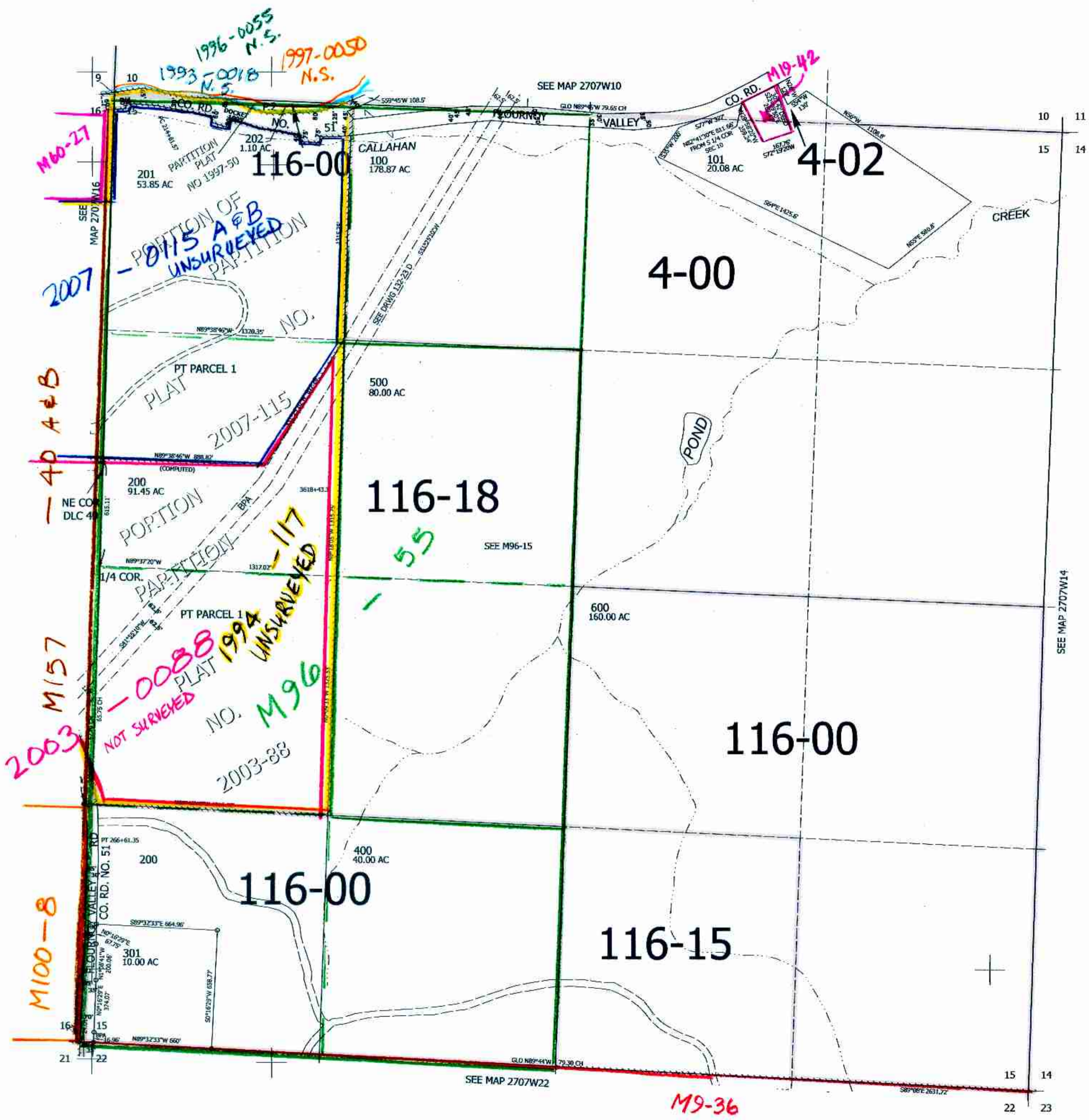
Upper Left:  
123°31'52"W 43°13'51"N  
4113684E 584692N ft

SEC.15 T.27S. R.07W. W.M.  
DOUGLAS COUNTY  
1" = 400'

Date Exported 2024-12-12

270715

CANCELLED NOS:  
400M1 500M1 300



11/2025  
ke

270715

Lower Right:  
123°30'3"W 43°12'45"N  
4121533E 577736N ft