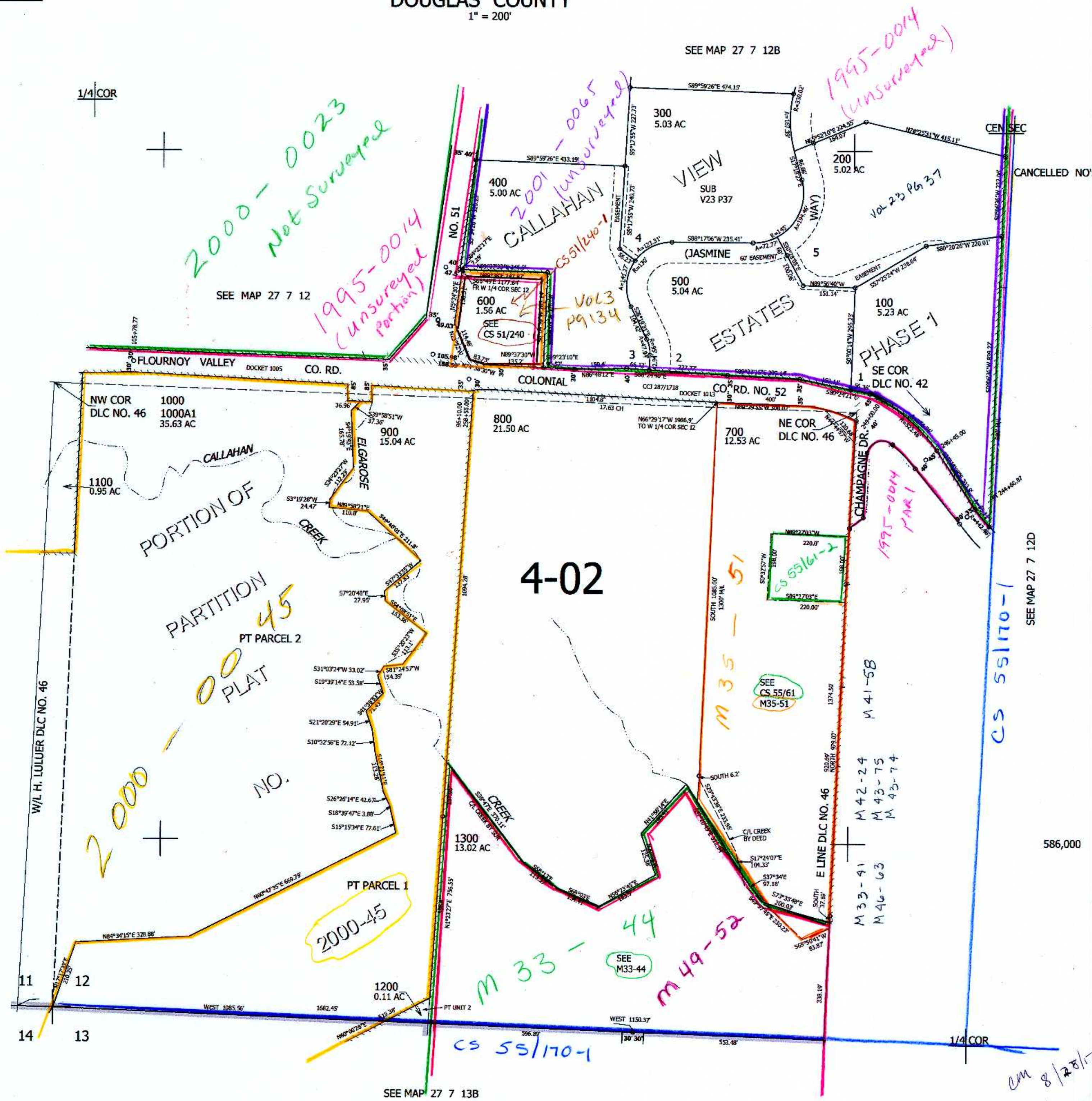


THIS MAP WAS PREPARED FOR ASSESSMENT PURPOSE ONLY.

SW1/4 SEC.12 T.27S. R.7W. W.M.
DOUGLAS COUNTY
1" = 200'

REVISED ON

27 7 12C



SEE MAP 27 7 11

W/L H. LULUER DLC NO. 46

2000-0045

PT PARCEL 2
NO. 45
PLAT

PT PARCEL 1
2000-45

4-02

M33-44

M49-52

CS 55/170-1

M35-51

SEE CS 55/61 M35-51

M41-58
M42-24
M43-75
M43-74
M33-41
M46-63

CS 55/170-1

SEE MAP 27 7 12D

586,000

SEE MAP 27 7 13B

4,128,000

cm 8/28/17
jcv

27 7 12C