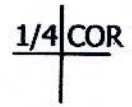
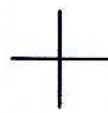
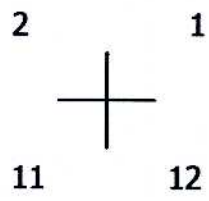


THIS MAP WAS PREPARED FOR ASSESSMENT PURPOSE ONLY.

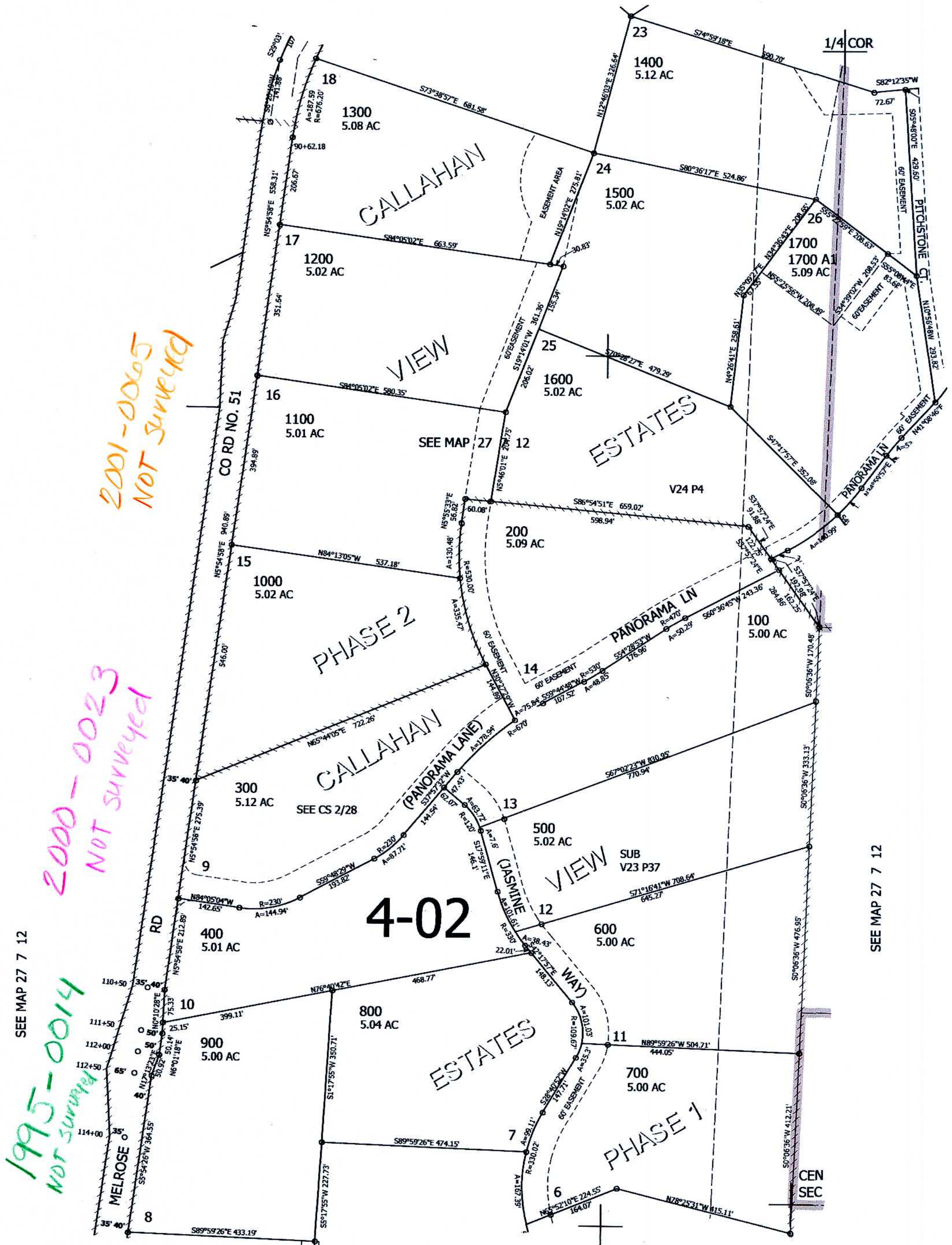
NW1/4 SEC.12 T.27S. R.7W. W.M.
DOUGLAS COUNTY
1" = 200'

REVISED ON
2-8-19

27 7 12B



CANCELLED NO'S



*2001-0005
NOT SURVEYED*

*2000-0023
NOT SURVEYED*

*1995-0014
NOT SURVEYED*

SEE MAP 27 7 12

4-02

SEE MAP 27 7 12

SEE MAP 27 7 12C

*scw 2-12-19
8*

586,000

27 7 12B

4,128,000