

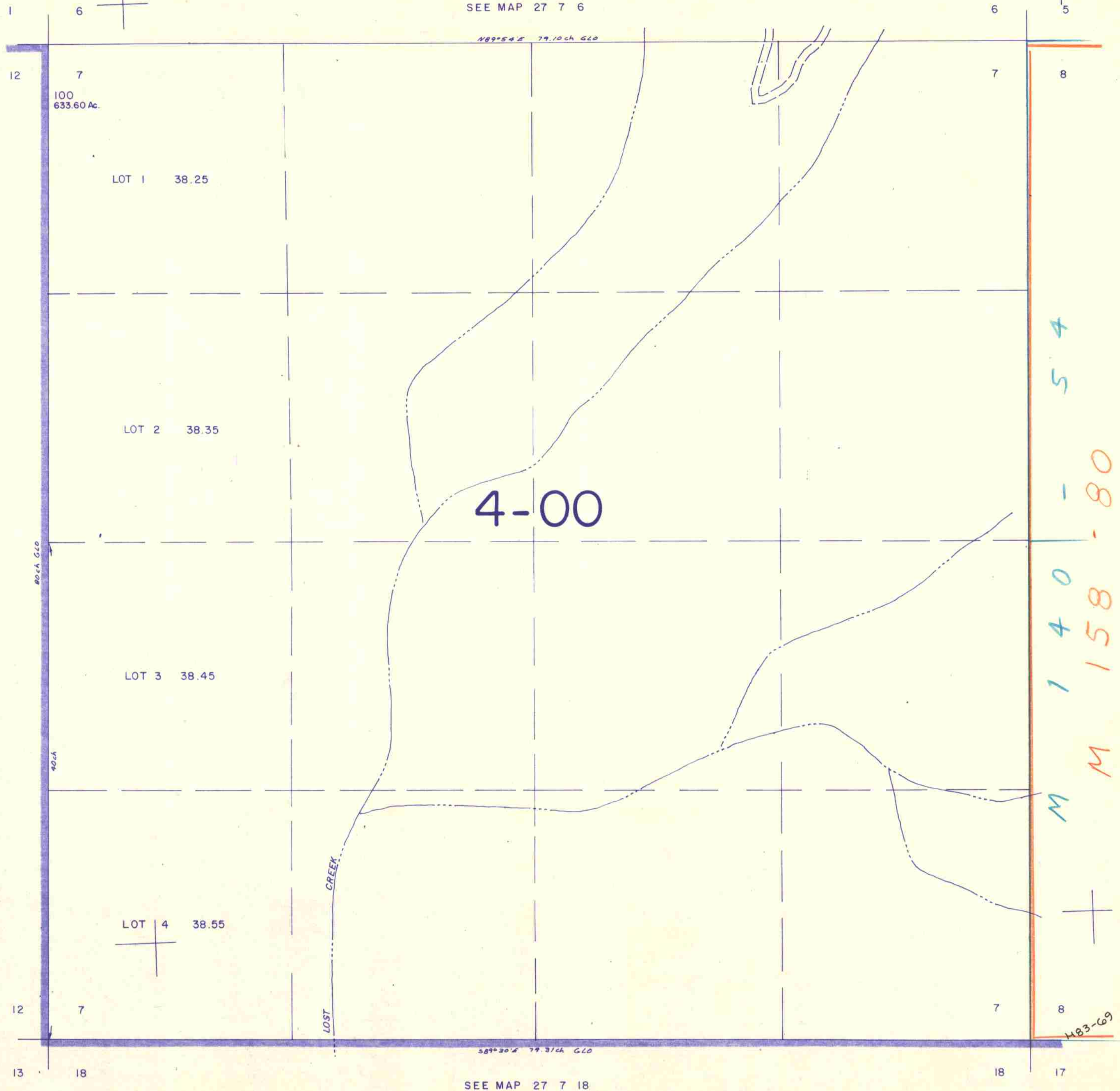
This map was prepared for assessment purpose only.

SECTION 7 T.27S. R.7W. W.M.
DOUGLAS COUNTY

27 7 7

1" = 400'

SEE MAP 27 7 6



N89°54'E 79.10 ch GLO

80 ch GLO

40 ch

LOST CREEK

S89°30'E 79.31 ch GLO

M 140 - 80
M 158 - 80
483-69

585,000

1,180,000

SEE MAP 27 7 18

27 7 7

5/85
CMB