

THIS MAP WAS PREPARED FOR ASSESSMENT PURPOSE ONLY.

SE1/4 SEC.2 T.27S. R.7W. W.M.
DOUGLAS COUNTY

1" = 200'

SEE MAP 27 7 2A

REVISED ON
2-12-14

27 7 2D

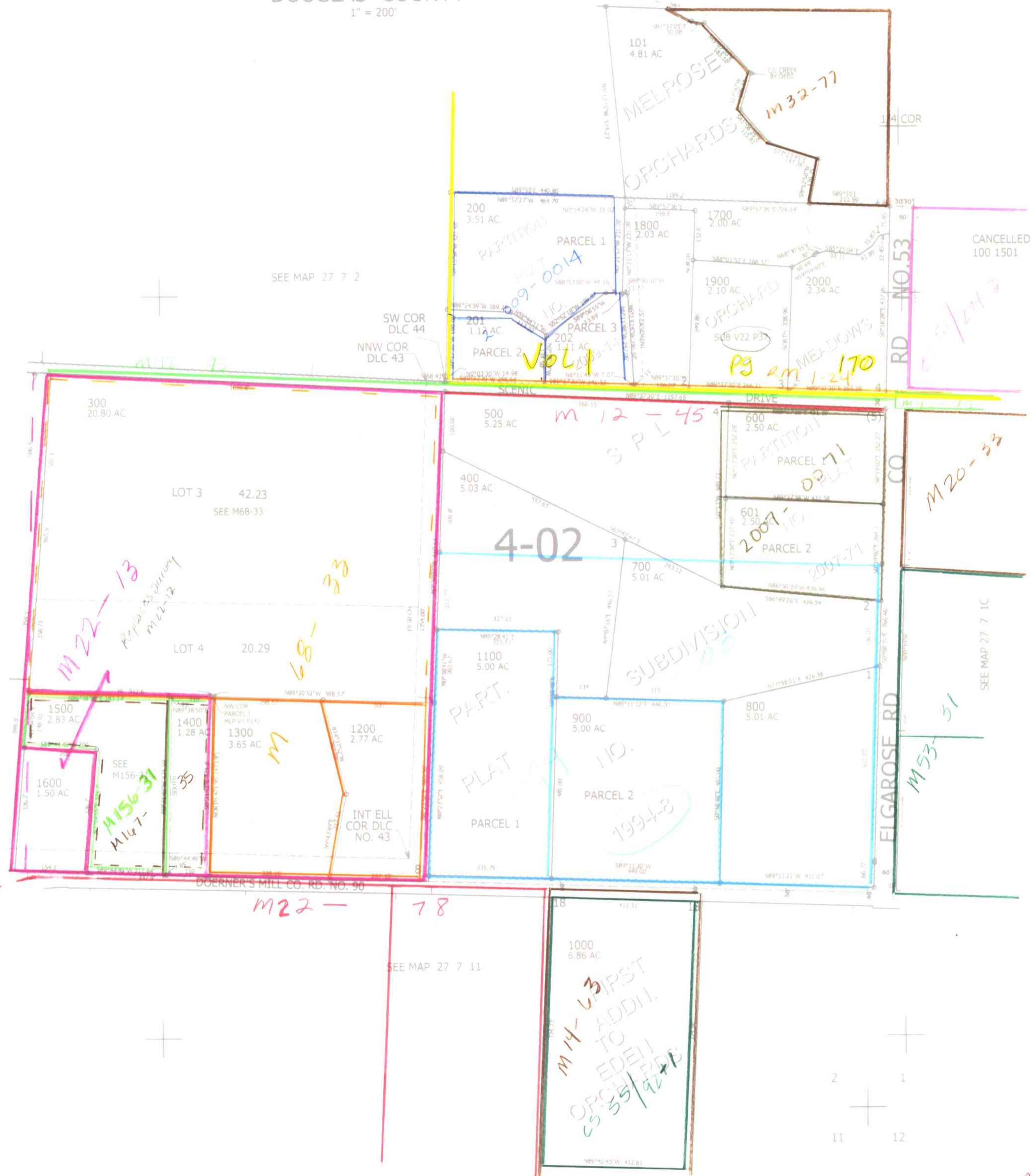
CEN SEC

SEE MAP 27 7 2

SW COR
DLC 44
NNW COR
DLC 43

CANCELLED NO'S
100 1501

SEE MAP 27 7 2



589,000

1/4 COR

4,126,000

any other sev

27 7 2D