

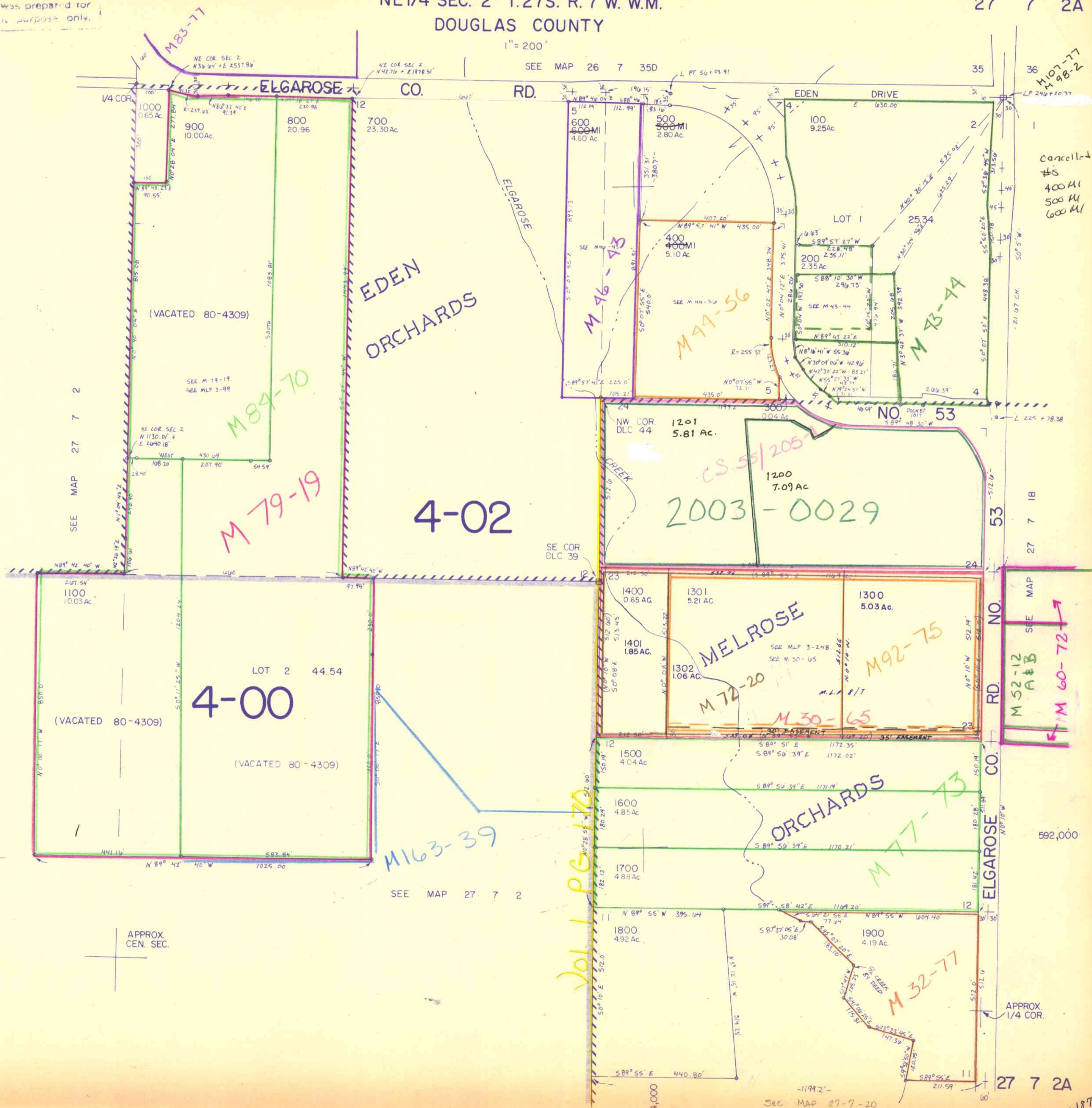
This map was prepared for assessment purpose only.

NE 1/4 SEC. 2 T. 27S. R. 7 W. W.M. DOUGLAS COUNTY

27 7 2A

1" = 200'

SEE MAP 26 7 35D



Cancelled #8
400 MI
500 MI
600 MI

IB
27 7

SEE MAP

M 52-12 A+B

M 60-72

592,000

APPROX. 1/4 COR.

27 7 2A

See MAP 27-7-20

187