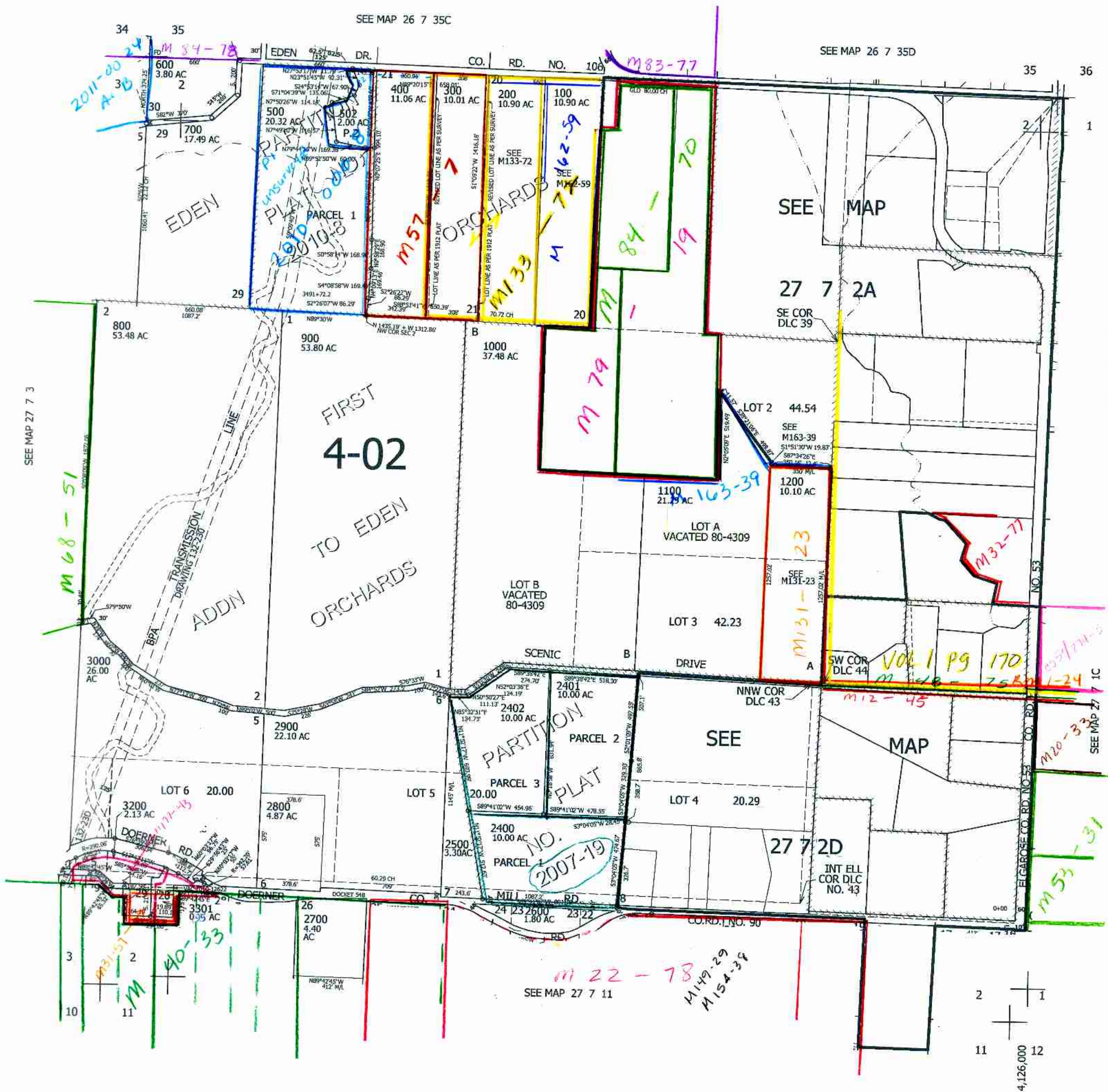


THIS MAP WAS PREPARED FOR ASSESSMENT PURPOSE ONLY.

SEC. 2 T. 27S. R. 7W. W.M.
DOUGLAS COUNTY
1" = 400'

REVISED ON
4-20-12

27 7 2
& INDEX



- CANCELLED NO'S
- 2400M1 1501 1603
- 1300 1400 1500
- 1600 1601 1602
- 1700 1800 1900
- 2000 2100 2200
- 2300 2500M1 3100M1
- 3200M1 3300M1 501
- 3100 1101 3300

CM
1/10/12
JC ✓
27 7 2
& INDEX

