

SW1/4 SEC. 30 T.27S. R.6W. WM.  
DOUGLAS COUNTY

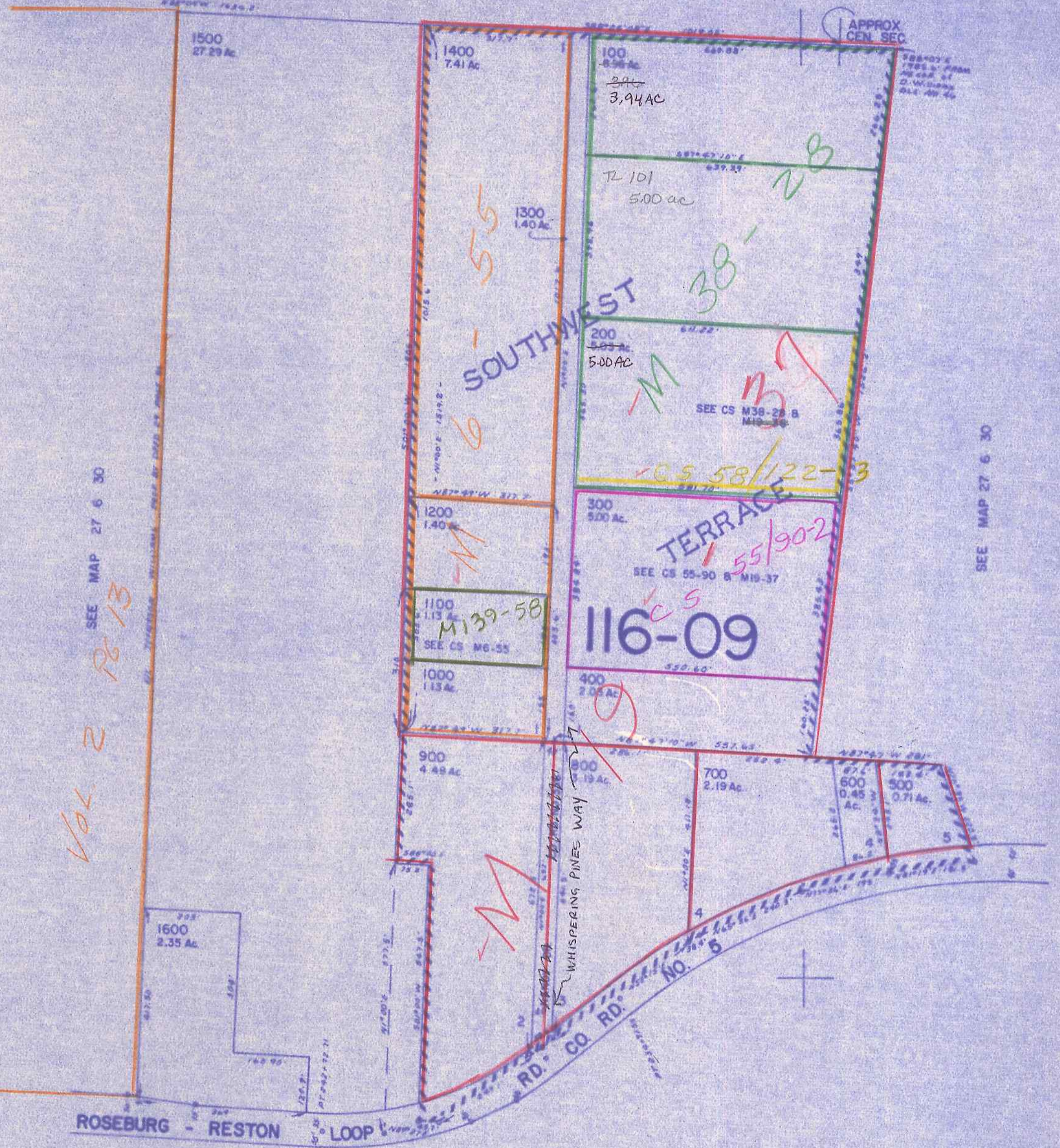
27 6 30C

1" = 200'

SEE MAP 27 6 30

1/4 COR  
NW COR  
DAVID WILLIAMS  
DLC NO 46

570,000



SEE MAP 27 6 30

SEE MAP 27 6 30  
Vol. 2 R 13

116-09  
SEE CS 55-90 & M19-37  
SEE CS M39-28 B  
M19-37

25 30  
36 31

SEE MAP 27 6 30

APPROX  
1/4 COR

M 109-75

212,000

27 6 30C