

THIS MAP WAS PREPARED FOR ASSESSMENT PURPOSE ONLY.

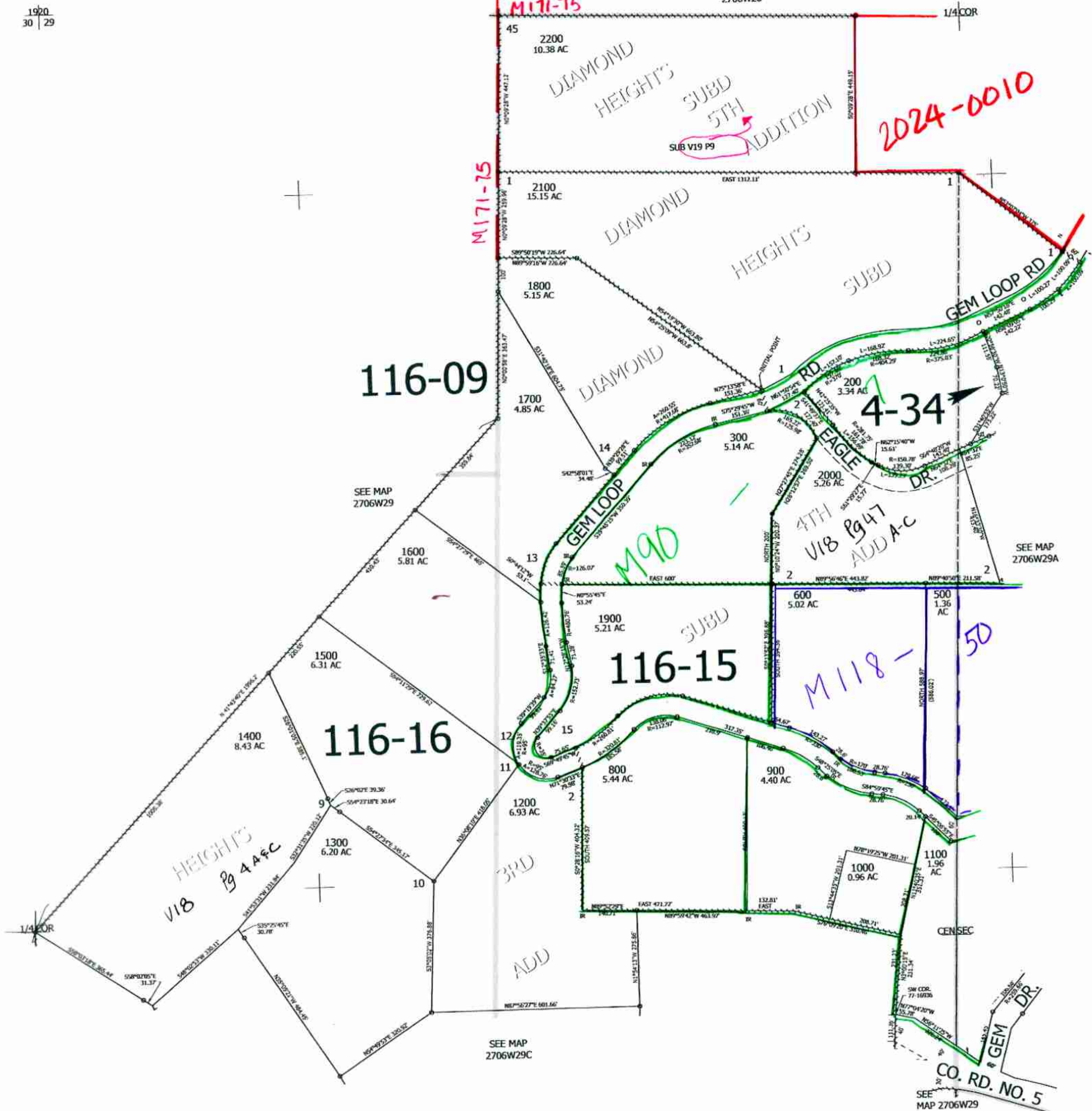
Upper Left:
123°26'55"W 43°12'N
4135243E 572638N R.

1920
30 | 29

NW1/4 SEC.29 T.27S. R.06W. W.M.
DOUGLAS COUNTY

SEE MAP
2706W20

CANCELLED NOS:
100 700 400 2201



Lower Right:
123°26'11"W 43°11'27"N
4139121E 569151N R.

2706W29

1/23 8/23