

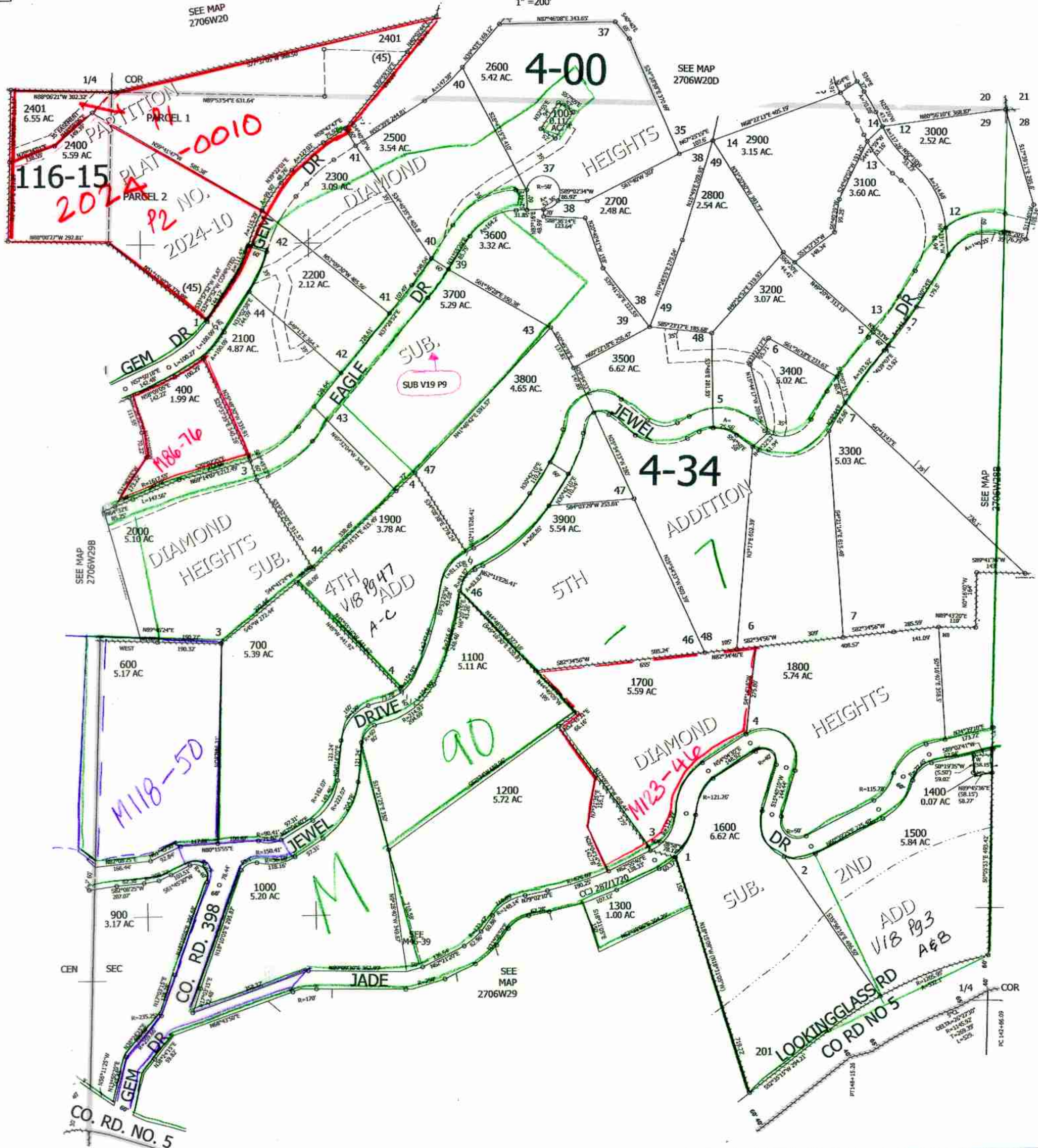
THIS MAP WAS PREPARED FOR ASSESSMENT PURPOSE ONLY.

Upper Left:
123°26'22"W 43°12'2"N
4137721E 572778N ft

NE1/4 SEC.29 T.27S. R.06W. W.M.
DOUGLAS COUNTY
1"=200'

Date Exported 2024-03-21

CANCELLED NOS:
800 202 1201
300 900 200
201



12385
JCV 270629A

Lower Right:
123°25'27"W 43°11'29"N
4141645E 569300N ft