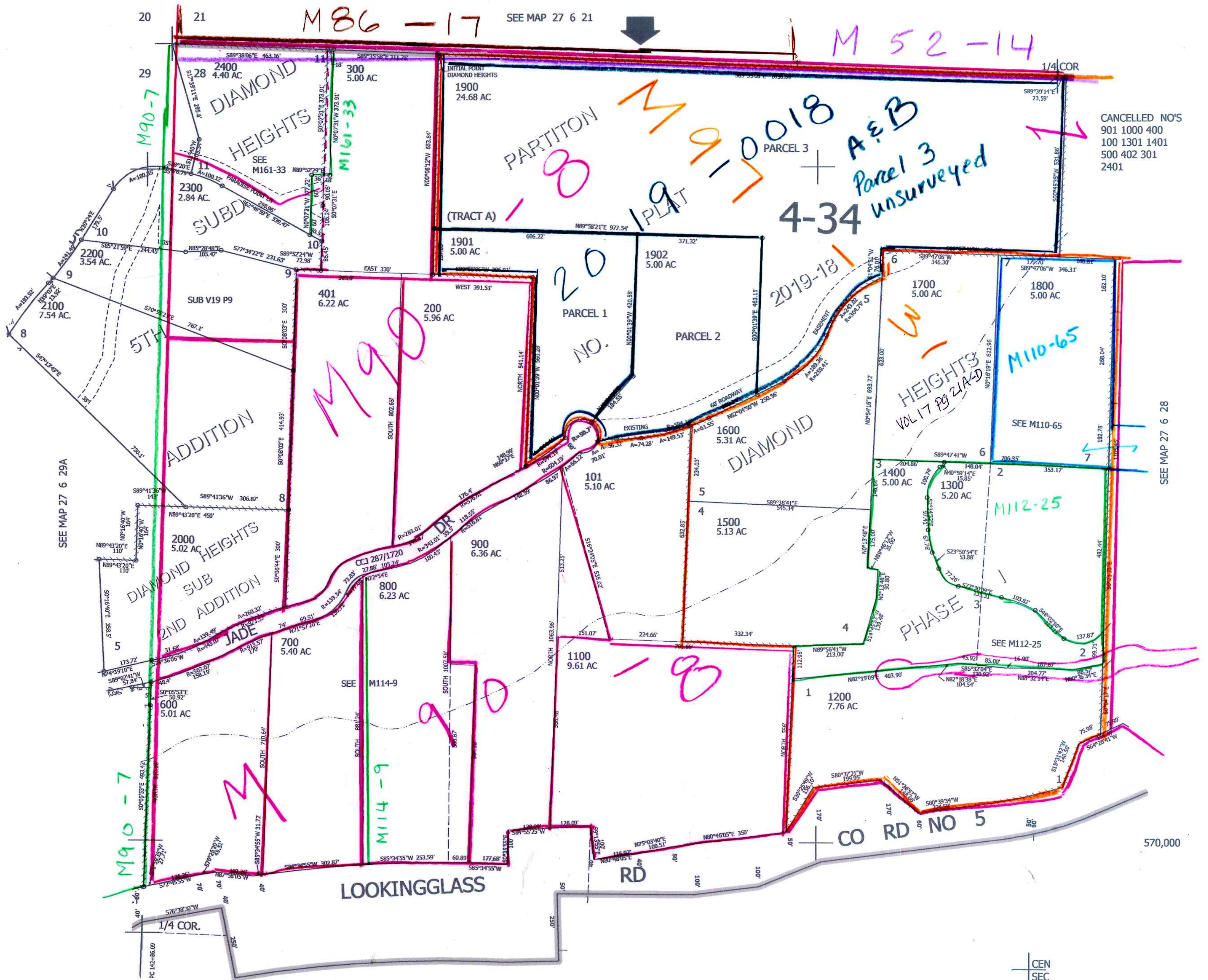


THIS MAP WAS PREPARED FOR ASSESSMENT PURPOSE ONLY.

NW1/4 SEC.28 T.27S. R.6W. W.M. DOUGLAS COUNTY
1" = 200'

REVISED ON 7-2-19

27 6 28B



CANCELLED NO'S
901 1000 400
100 1301 1401
500 402 301
2401

SEE MAP 27 6 28

SEE MAP 27 6 29A

SEE MAP 27 6 28

4,143,000

7-2-1988

27 6 28B