

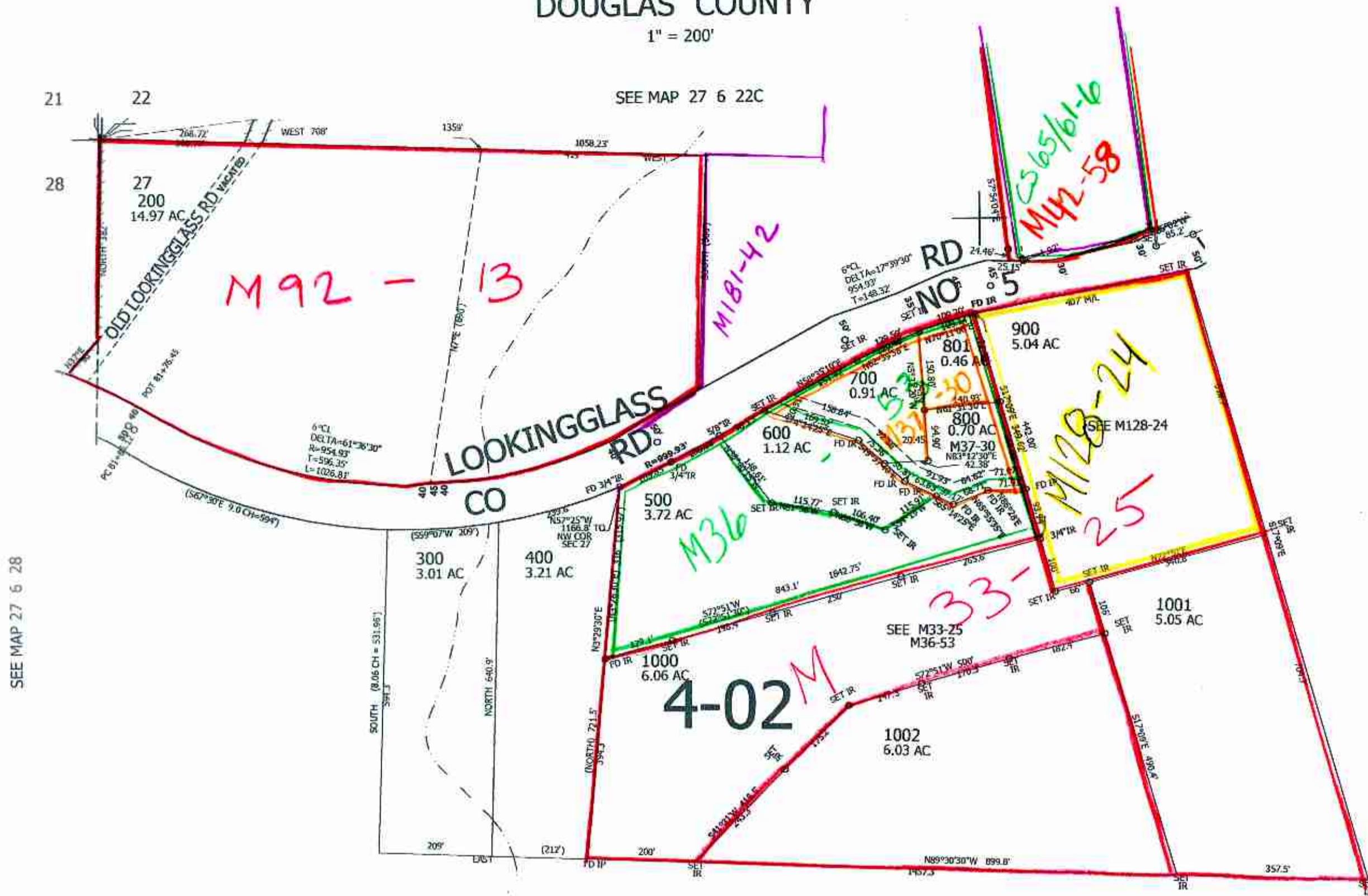
THIS MAP WAS PREPARED FOR ASSESSMENT PURPOSE ONLY.

NW1/4 SEC.27 T.27S. R.6W. W.M.
DOUGLAS COUNTY

1" = 200'

REVISED ON
12-7-21

27 6 27B



1/4
COR

CANCELLED NO'S
101100

SEE MAP 27 6 27

SEE MAP 27 6 27

570,000

1/4
COR

1/4
COR

12/2021
icv

4,148,000

27 6 27B