

THIS MAP WAS PREPARED FOR
ASSESSMENT PURPOSE ONLY

SW1/4 NW1/4 SEC. 25 T.27S. R.6 W W.M.
DOUGLAS COUNTY

1"=100'

REVISED ON
11-15-02

27 6 25BC

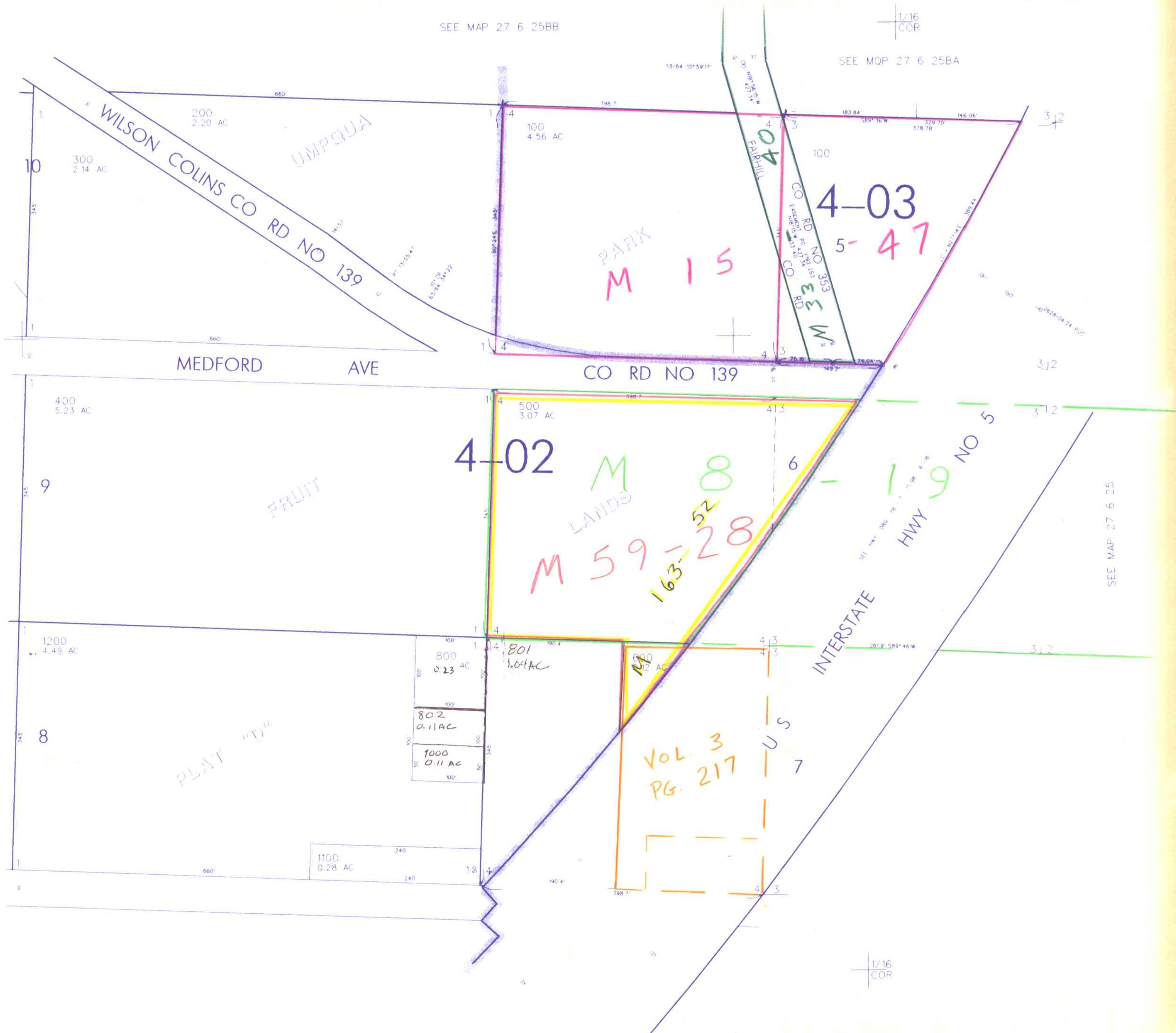
CANCELLED NO'S
700 900

1/16
COR

SEE MAP 27 6 25BB

1/16
COR

SEE MAP 27 6 25BA



SEE MAP 27 6 26

SEE MAP 27 6 25

1/4
COR

1/16
COR

SEE MAP 27 6 25C

4,158,000

569,000

27 6 25BC

11/02 JP