

THIS MAP WAS PREPARED FOR ASSESSMENT PURPOSE ONLY.

NW1/4 NW1/4 SEC.25 T.27S. R.6W. W.M.  
DOUGLAS COUNTY

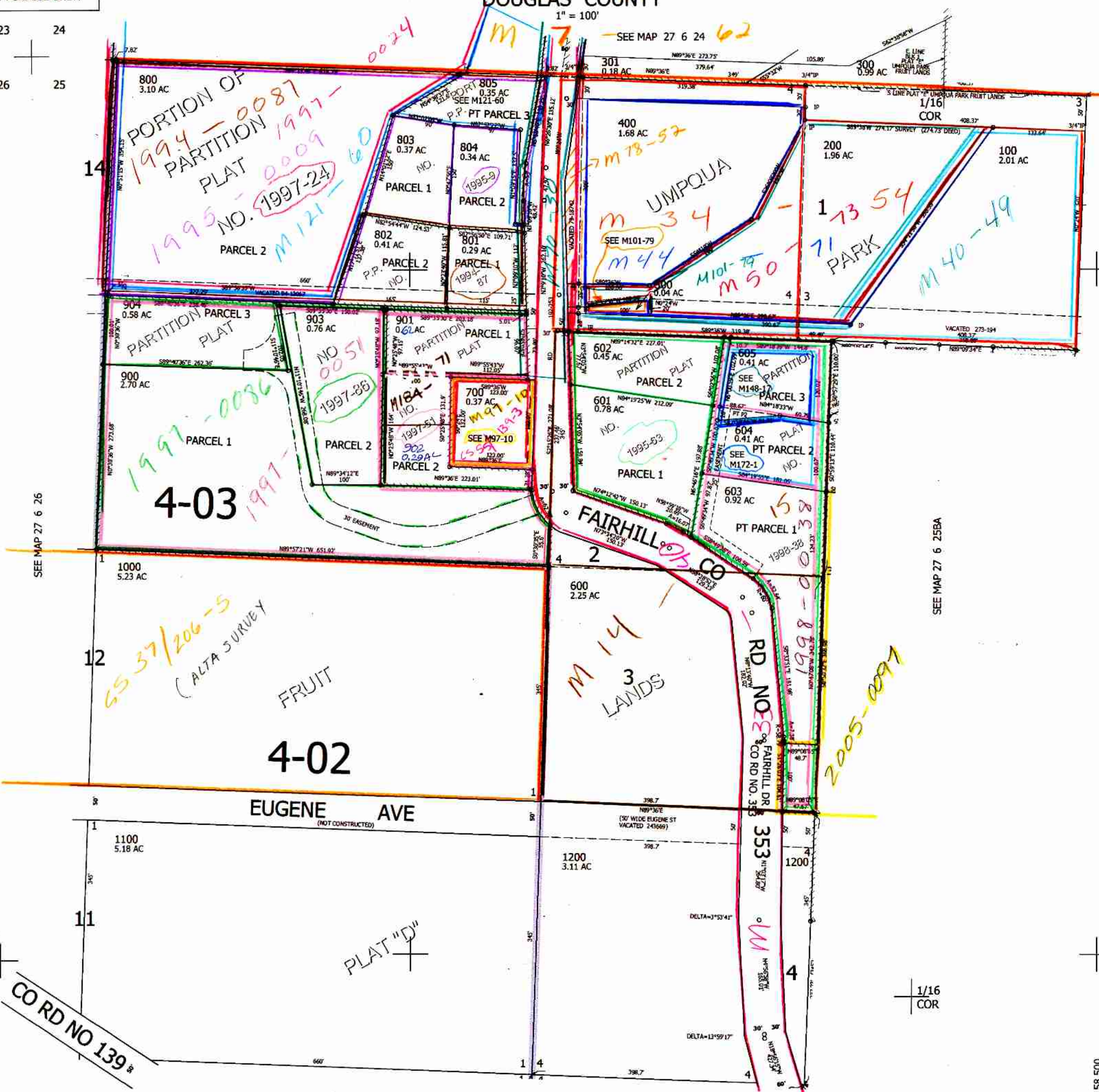
REVISED ON  
11-15-16

27 6 25BB

1" = 100'

CANCELLED NO'S  
606 607

23 24  
26 25



SEE MAP 27 6 26

SEE MAP 27 6 25BA

1/16 COR  
CO RD NO 139

SEE MAP 27 6 25BC

570,500  
1/16 COR  
4,158,500  
CM  
11/2016  
JCV  
27 6 25BB