

THIS MAP WAS PREPARED FOR ASSESSMENT PURPOSE ONLY.

Upper Left:  
123°21'49"W 43°12'N  
4157800E 571905N ft

NE1/4 NW1/4 SEC.25 T.06W. W.M.  
DOUGLAS COUNTY  
1"=100'

CANCELLED NOS:  
1608 1804 1606  
1801 600 601  
700 800 900

SEE MAP  
2706W24C

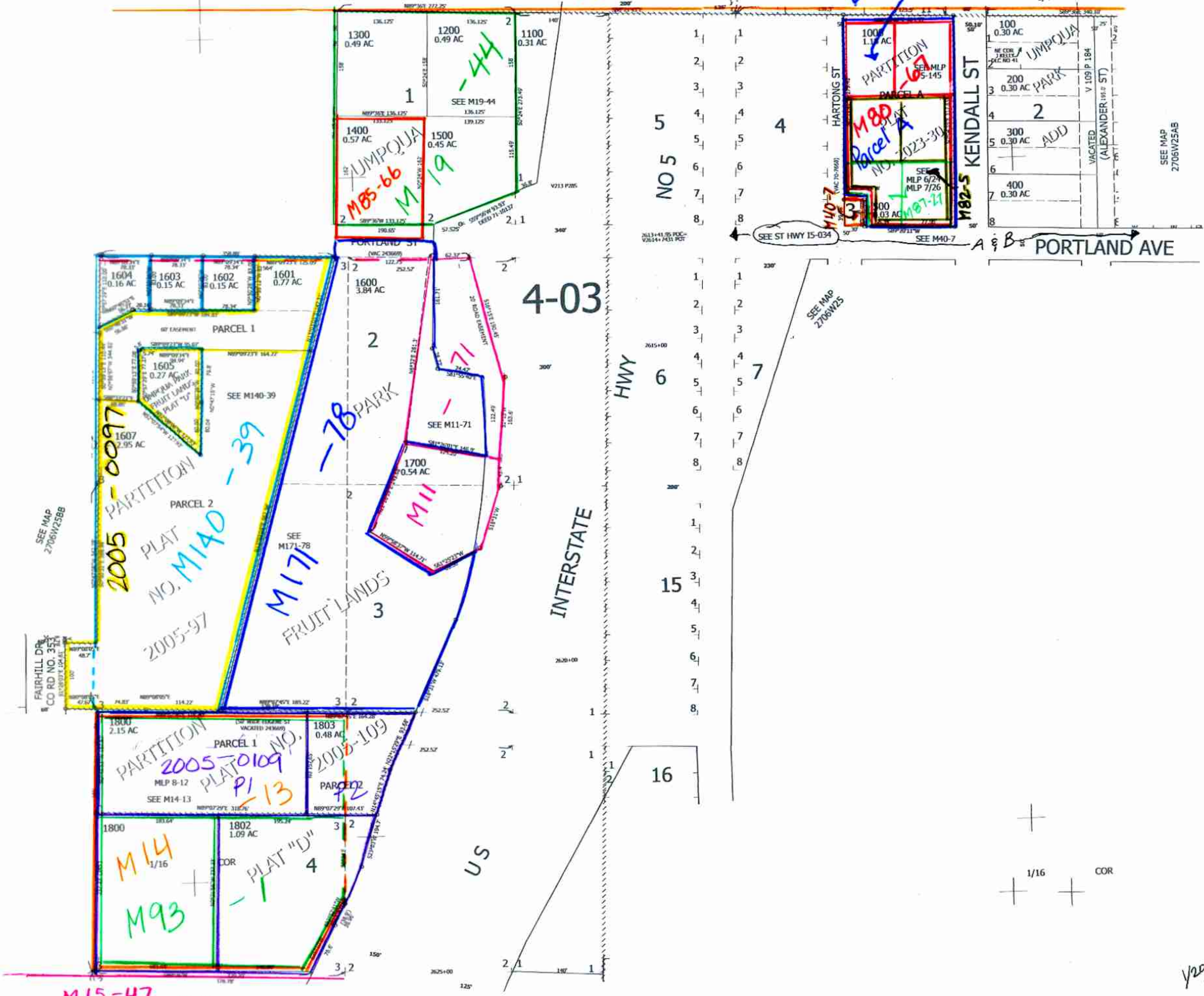
SEE MAP  
2706W24CD

2023-0030

1/16 COR

1/4 COR

M7-62



SEE MAP  
2706W25BB

FAIRHILL DR  
CO RD NO. 357

SEE MAP  
2706W25BC

SEE MAP  
2706W25

SEE MAP  
2706W25AB

Y2024 B  
JCL

270625BA  
Roseburg

Lower Right:  
123°21'22"W 43°11'43"N  
4159859E 570126N ft