

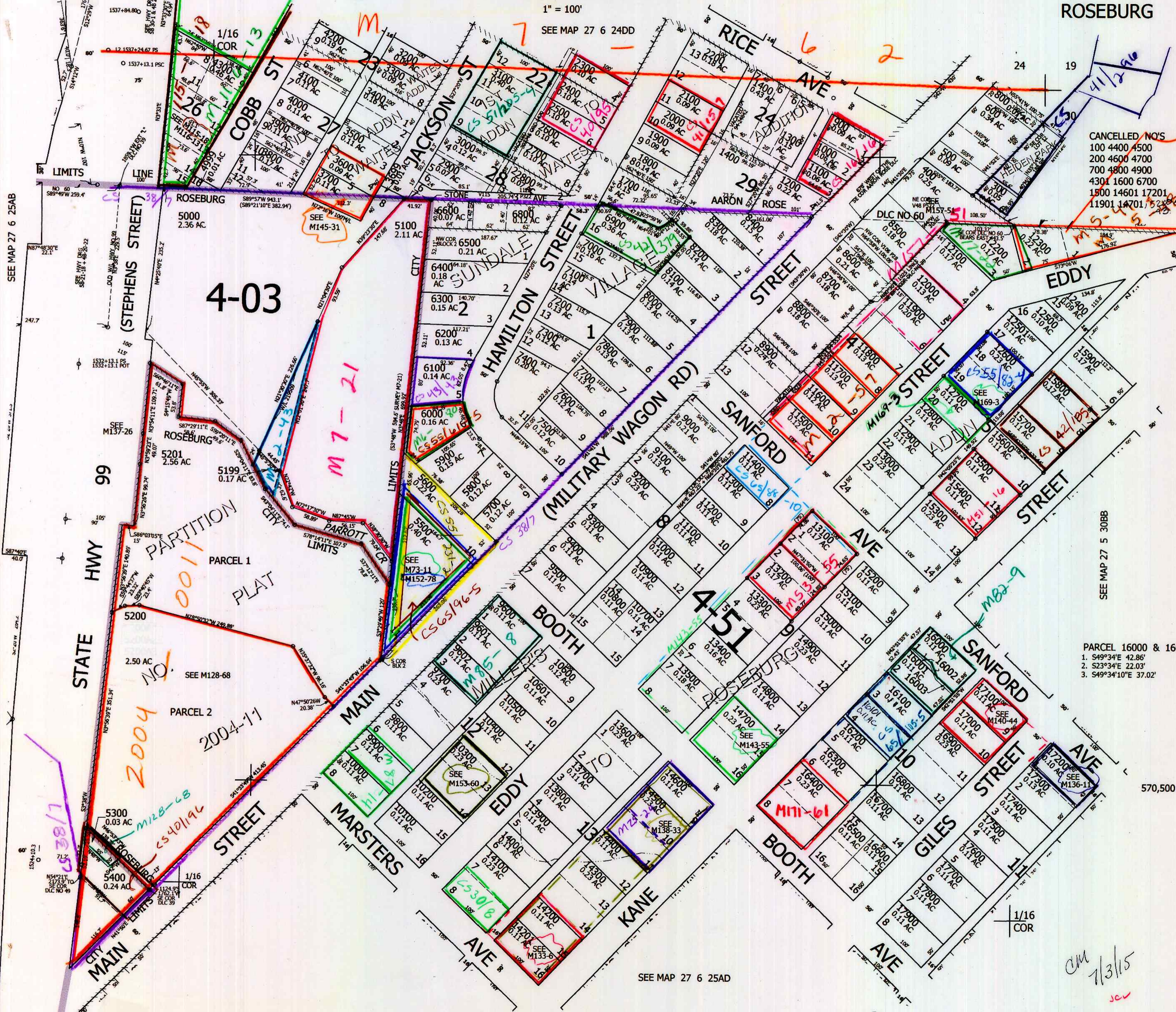
THIS MAP WAS PREPARED FOR ASSESSMENT PURPOSE ONLY.

NE1/4 NE1/4 SEC.25 T.27S. R.6W. W.M. DOUGLAS COUNTY

REVISED ON 6-29-15

27 6 25AA ROSEBURG

1" = 100'
SEE MAP 27 6 24DD



CANCELLED NOS
100 4400 4500
200 4600 4700
700 4800 4900
4301 1600 6700
1500 14601 17201
11901 14701 52801, A2

PARCEL 16000 & 16001
1. S49°34'E 42.86'
2. S23°34'E 22.03'
3. S49°34'10"E 37.02'

570,500

SEE MAP 27 6 25AD

CM 7/3/15
JCV

27 6 25AA ROSEBURG