

NOTE: PORTION OF W. MYRTLE AVE HAS BEEN VACATED BUT IS PAVED & BEING USED AS PUBLIC R/W

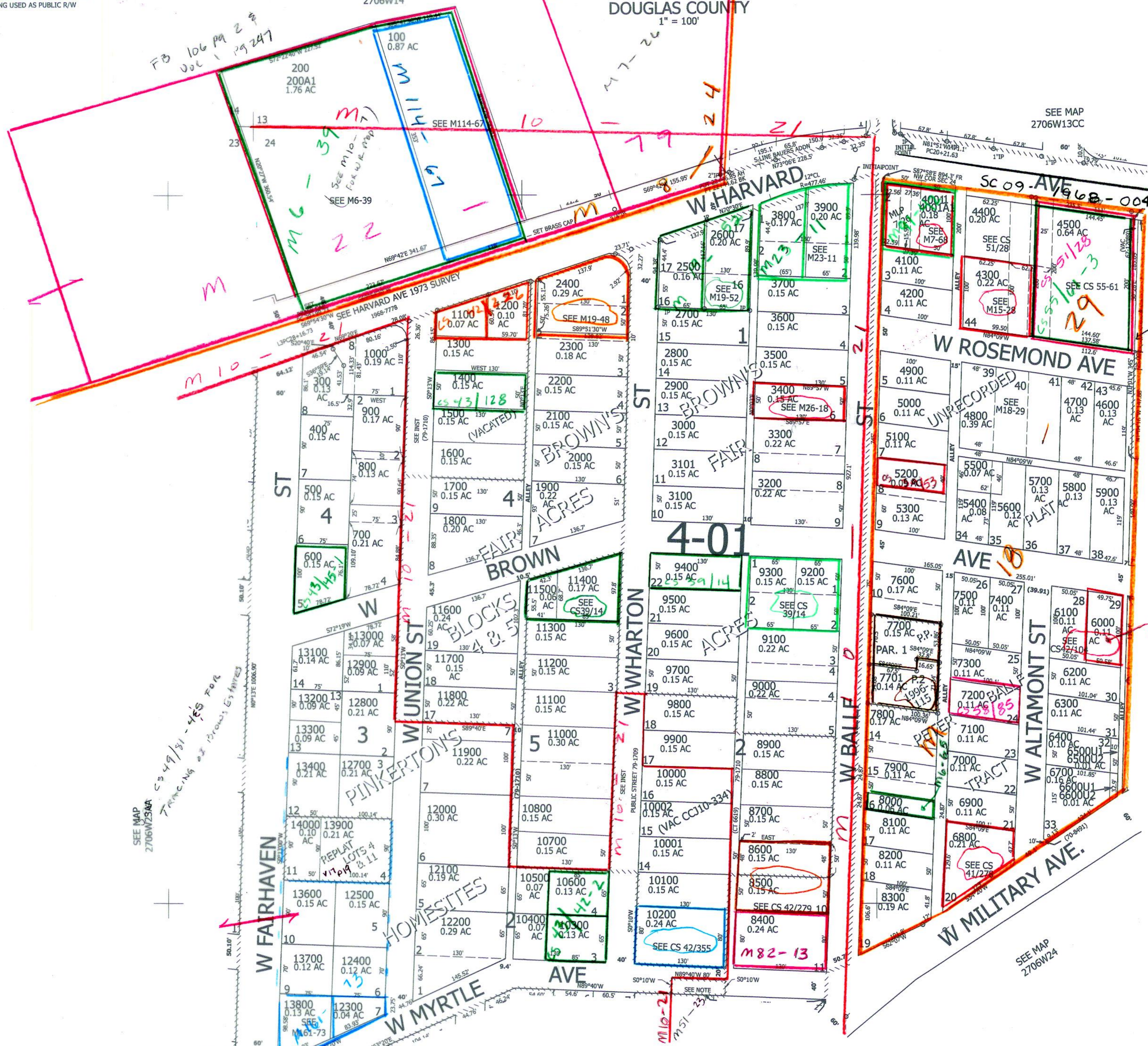
SEE MAP 2706W14

NW1/4 NW1/4 SEC.24 T.27S R.06W. W.M. DOUGLAS COUNTY

1" = 100'

SEE MAP 2706W13CC

1/16 COR



Vacation ORD # 7734 9/8/67 Book 400 pg 223

SEE MAP 2706W24BA

SEE ALSO CS 42/104-2

SEE MAP 2706W25AA  
Tracing of Brown's Estates  
CS 49/31-45 FOR

SEE MAP 2706W24BC

SEE MAP 2706W24

1/16 COR

CM 8/31/09