

THIS MAP WAS PREPARED FOR ASSESSMENT PURPOSES ONLY

NE 1/4 NW 1/4 SEC. 24 T. 27 S. R. 6 W. W.M.
DOUGLAS COUNTY

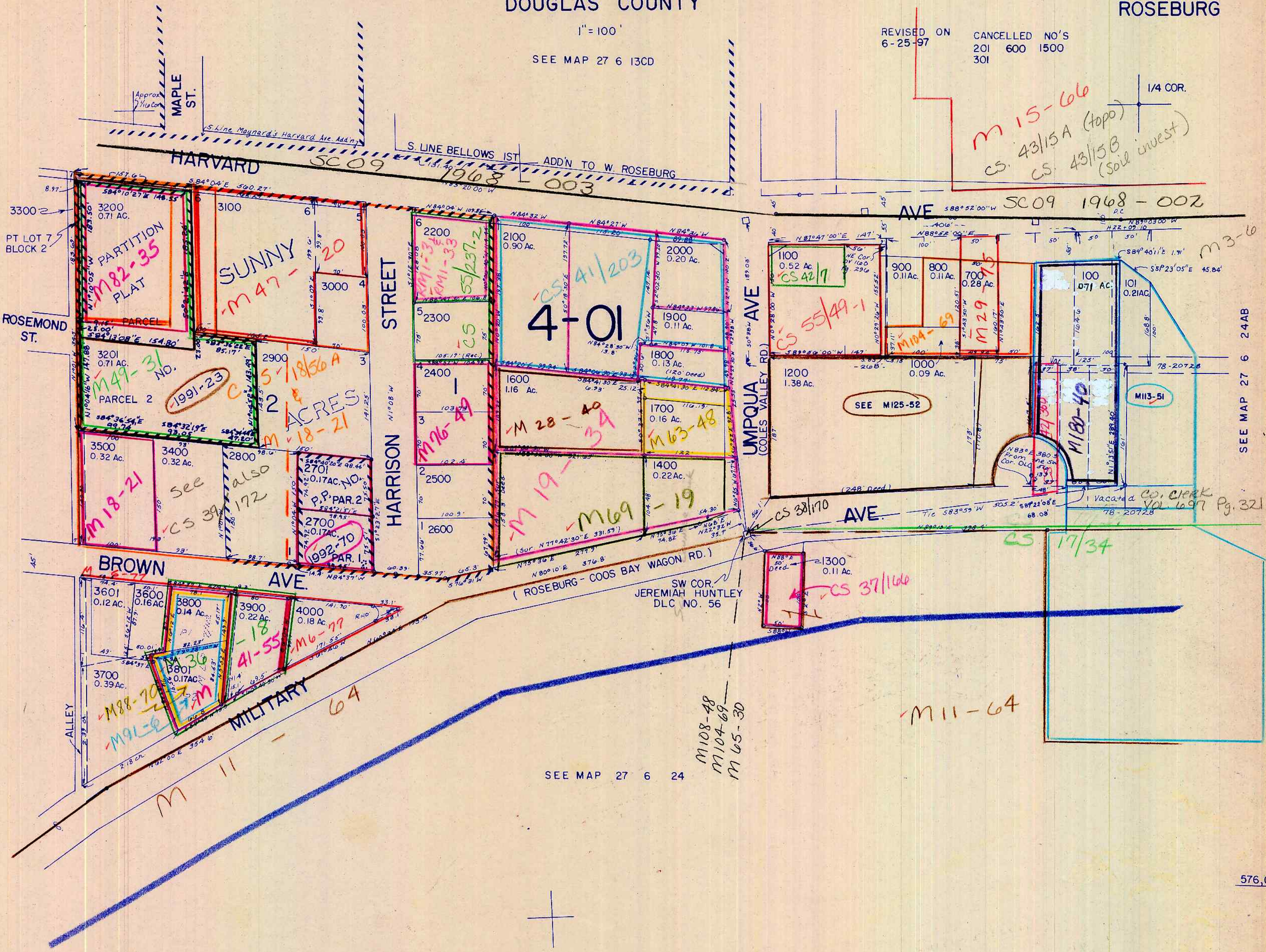
27 6 24BA
ROSEBURG

1" = 100'

SEE MAP 27 6 13CD

REVISED ON
6-25-97

CANCELLED NO'S
201 600 1500
301



SEE MAP 27 6 24BB

SEE MAP 27 6 24AB

SEE MAP 27 6 24

576,000

27 6 24BA
ROSEBURG

1,238,000

11/97